

## Trailer Stands



**SAFETY HAS A LEG  
TO STAND ON.**

### WHAT'S THE RISK?

When 'spotted' on landing gear, for loading and unloading, transport trailers present a critical safety risk. Stressed by the combined weight of cargo and forklifts, trailers can up-end, or landing gear can collapse, creating potentially devastating situations for workers caught within.

Trailer stability is affected by a complex relationship involving number of axles, trailer weight, landing gear placement, weight and placement of cargo, weight and position of forklift and more.

Understanding the load and stability ratings of all the different equipment in the marketplace is beyond the training of most forklift drivers, making every trip into the nose of the trailer a gamble.

### THE SIMPLE IRONguard<sup>TM</sup> SOLUTION.

When the cab disengages from the trailer, the trailer is at risk of collapse unless a secondary support system is utilized. For strength and support, IRONguard<sup>TM</sup>'s line up of portable Trailer Stands can be easily placed under a trailer's front end to help prevent mishap and tragedy.



# The Simple IRONguard™ Solution

## SIMPLE, STRONG & DEPENDABLE

STRENGTH IN NUMBERS. FOUR STRONG OPTIONS.

### FOR HEAVYWEIGHT & HIGH TRAFFIC DOCKS



#### An IRONguard™ Top Option

Gas shock, self-leveling  
system auto adjusts height

Lever system delivers back-  
saving ergonomics

Easy to position and adjust

Strong, stable, patented  
technology

#### AutoStand PLUS

Best option for a busy  
loading dock environment

### FOR HEAVYWEIGHT & LOW TRAFFIC DOCKS



#### Strong Support

Engineered for  
heavy-duty use

Large base creates  
stable solution

Gas shock,  
self-leveling system  
auto-adjusts height

#### AutoStand Top-of-the-line engineering

### FOR LIGHTER WEIGHT & HIGH TRAFFIC DOCKS



#### Simple Set Up

Quick & easy positioning of  
two load-supporting posts

Simple 'spinning' height  
adjustment

Enhanced stability from  
2-post solution

#### TWO-POST TRAILER STAND

Two points of support

### FOR LIGHTER WEIGHT & LOW TRAFFIC DOCKS



#### Dependable & Agile

Height adjustable with  
easy ratchet system

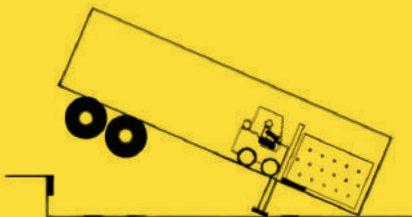
Recommend 2 units per  
dock position (one for  
each side of trailer)

#### RATCHET TOP STABILIZING JACK Support when it's needed

**PREVENT  
TRAILER  
UP-ENDING**

**PREVENT  
LANDING GEAR  
COLLAPSE**

**PREVENT  
INJURY**



# AutoStand PLUS

## A HEAVYWEIGHT SOLUTION FOR HIGH TRAFFIC DOCKS

BEST OPTION FOR A BUSY LOADING DOCK ENVIRONMENT



With its broad, stable platform and ergonomic design, the AutoStand Plus is engineered to shoulder the weight and stresses of on/off loading in heavy-duty loading dock environments. AutoStand Plus can be positioned in seconds, instantly creating a stronger, more stable loading environment.

- Up to 100,000 lbs Static Load Capacity (45,359 kg)
- Large weight distributing base (17" x 18 1/2") (432 x 470 mm)
- Large, reinforced contact pad (5" x 30" x 1/4") (127 x 762 x 6 mm)
- 16" (406 mm) diameter solid rubber tires for easy handling on any surface
- Easy to position
- Gas shock, self-leveling system with lever locking mechanism
- 1-year limited warranty



**ERGONOMIC &  
EASY TO OPERATE**



**PREVENT TRAILER  
UP-ENDING**



**PREVENT LANDING  
GEAR COLLAPSE**



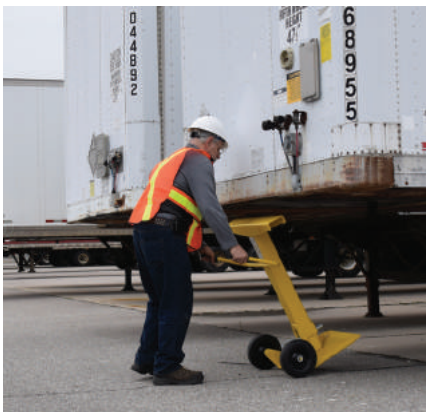
## A HEAVYWEIGHT SOLUTION FOR LOW TRAFFIC DOCKS

### TOP-OF-THE-LINE ENGINEERING



Engineered for strength and stability with a broad supportive platform, AutoStand can more than carry its weight in creating a safer loading dock. AutoStand helps prevent trailer up-ending and landing gear collapse with its 100,000 lbs. (45,359 kg) load capacity!

- Up to 100,000 lbs Static Load Capacity (45,359 kg)
- Large weight distributing base (17" x 18 1/2") (432 x 470 mm)
- Large trailer contact pad (5" x 30" x 1/4") (127 x 762 x 6 mm)
- 10" diameter wheels (254 mm)
- Easy to position
- Gas shock, self-leveling system with security pin
- 1-year limited warranty



**SUPPORT  
WHERE IT'S NEEDED**



**PREVENT  
TRAILER UP-ENDING**



**PREVENT LANDING  
GEAR COLLAPSE**

# Two-Post Trailer Stand

## FOR LIGHTER WEIGHT & HIGH TRAFFIC DOCKS

### TWO POINTS OF SUPPORT



The IRONguard™ exclusive Two-Post Trailer Stand does what no single post solution can do. With twin, weight-bearing posts; one positioned on either side of the trailer, the Two-Post Trailer Stand helps eliminate BOTH trailer up-ending and trailer tip-over.

- Up to 100,000 lbs Static Load Capacity (45,359 kg) (50,000 lbs per post (22,678 kg)
- 6" diameter supporting pads (152 mm)
- 10" diameter wheels (254 mm)
- Easy to position
- Twin-Spin Levelling System
- Comes with self-contained transportation cart
- 1-year limited warranty



**FOR MAXIMUM STABILITY**



**EASY TO POSITION**



**TWIN-SPIN  
LEVELLING SYSTEM**

# Ratchet Top Stabilizing Jack

## FOR LIGHTER WEIGHT & LOW TRAFFIC DOCKS

### SUPPORT WHEN IT'S NEEDED



The Ratchet Top Stabilizing Jack takes the pressure off trailer landing gear delivering added strength and support. Easily positioned, we recommend the use of two Jacks per dock position; to be used one on each side of the trailer.

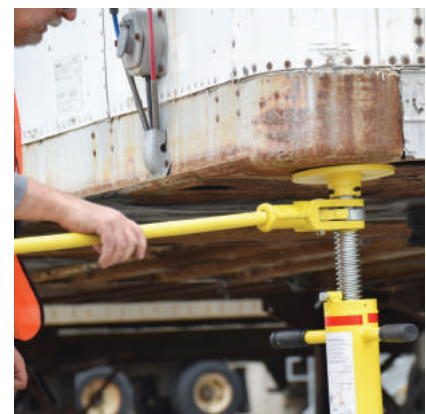
- Up to 100,000 lbs Static Load Capacity (45,359 kg)
- 8" diameter support pad (203 mm)
- 8" diameter wheels (203 mm)
- Easy to position
- Recommended use: TWO jacks per dock position (one for each side of trailer)
- 1-year limited warranty



**TWO JACKS PROVIDE  
OPTIMAL STABILITY**



**PREVENT TRAILER  
UP-ENDING**



**PREVENT LANDING  
GEAR COLLAPSE**