

**NOTE:**  
PRIMARY COLUMN IS THE COLUMN THAT IS LOCATED CLOSEST TO CONTROL ENCLOSURE.

PHOTOCELLS ARE LOCATED ON INTERIOR FACE OF COLUMN

MANUAL OPERATION ACCESS POINT

ELECTRICAL TERMINATION BOX IS LOCATED INSIDE COLUMN

2 ELECTRICAL CONTROLLERS ARE MOUNTED IN A 30" [762] x 30" [762] x 12" [305] NEMA 3R ENCLOSURE c/w A WIRE HARNESS. STANDARD HARNESS LENGTH ALLOWS FOR CONTROLLER ENCLOSURE TO BE PLACED 30 FT. [9144] FROM PRIMARY COLUMN. OPTIONAL EXTENDED HARNESS AVAILABLE WHERE CONTROLLERS ARE TO BE MOUNTED BEYOND THE STANDARD WIRE HARNESS LENGTH. CONTACT WALLACE INTERNATIONAL FOR DETAILS. MAXIMUM DISTANCE FROM CONTROL ENCLOSURE TO PRIMARY COLUMN IS DETERMINED BY DRIVE THRU WIDTH. CONTROLLERS, ENCLOSURE AND HARNESS BY WALLACE INTERNATIONAL. CONDUIT - BY OTHERS. SEE SHEET 2 FOR CONDUIT SIZES, QUANTITIES AND REQUIREMENTS.

**POWER REQUIREMENTS - 240V SINGLE PHASE - 20 AMP**

**FINISH NOTES:**  
STANDARD FINISH - HOT DIPPED GALVANIZED FOR ALL STEEL COMPONENTS  
OPTIONAL POWDER COAT PAINT FINISH AVAILABLE.

**DRIVE THRU HEIGHTS:**

6 FT.	72.0" [1829]	
7 FT.	84.0" [2134]	*** SEE NOTE BELOW
8 FT.	96.0" [2438]	
9 FT.	108.0" [2743]	*** SEE NOTE BELOW
10 FT.	120.0" [3048]	

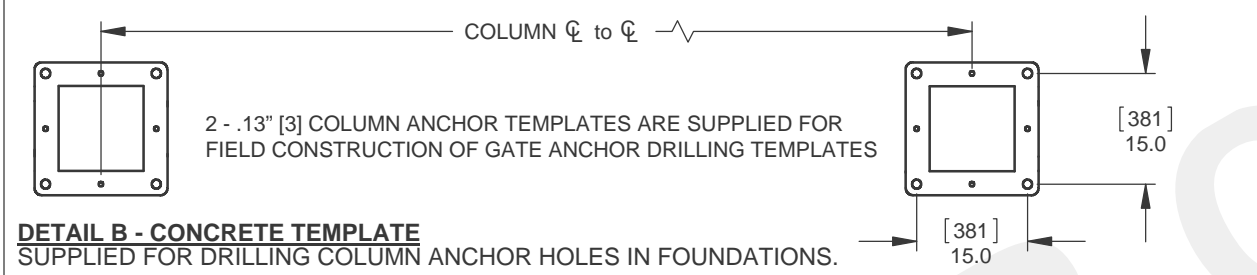
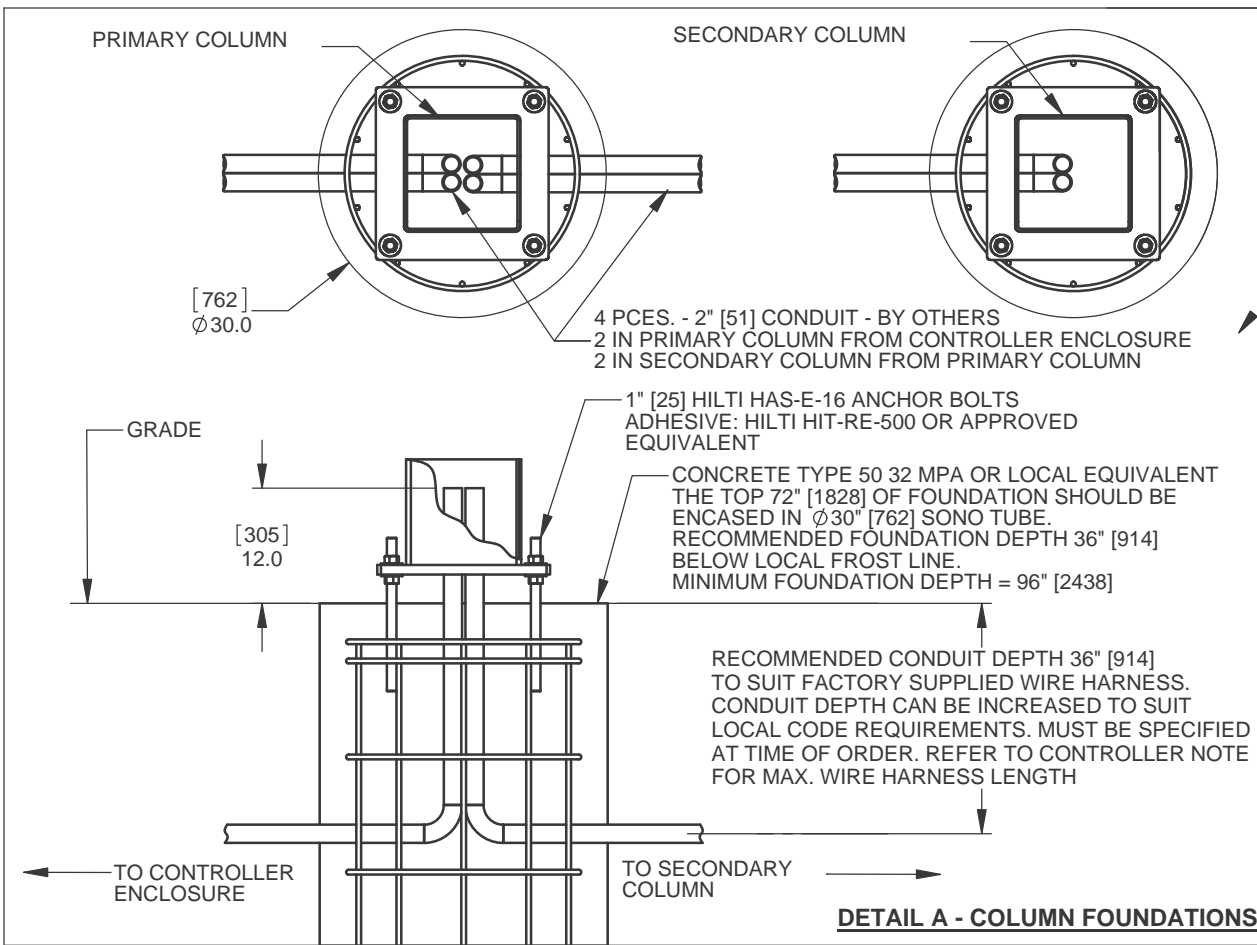
\*\*\* 7 & 9 FT. HEIGHTS AVAILABLE BY SPECIAL REQUEST

**WALLACE**  
PERIMETER SECURITY

115 Lawson Crescent  
Winnipeg, Manitoba, Canada, R3P 1A6  
Phone: 1-866-300-1110  
Fax: 1-204-284-1868  
www.wallaceperimetersecurity.com

Description:		<b>PDXT</b>	
		<b>POST DRIVE TRACKLESS SPEEDGATE STANDARD DIMENSIONS</b>	
Customer / Project Name:			
-			
Finish:		Date:	
SEE FINISH NOTES		7/7/2017	
Drawing No.		Rev.	
<b>PDXT-07-07-17</b>			
		Sheet:	
		1 of 6	

\*\*\* This drawing package is the standard set of shop drawings showing available options. Project specific drawings must be generated, signed and approved prior to fabrication of ANY speedgate. \*\*\*



**INSTALLATION PROCEDURE**

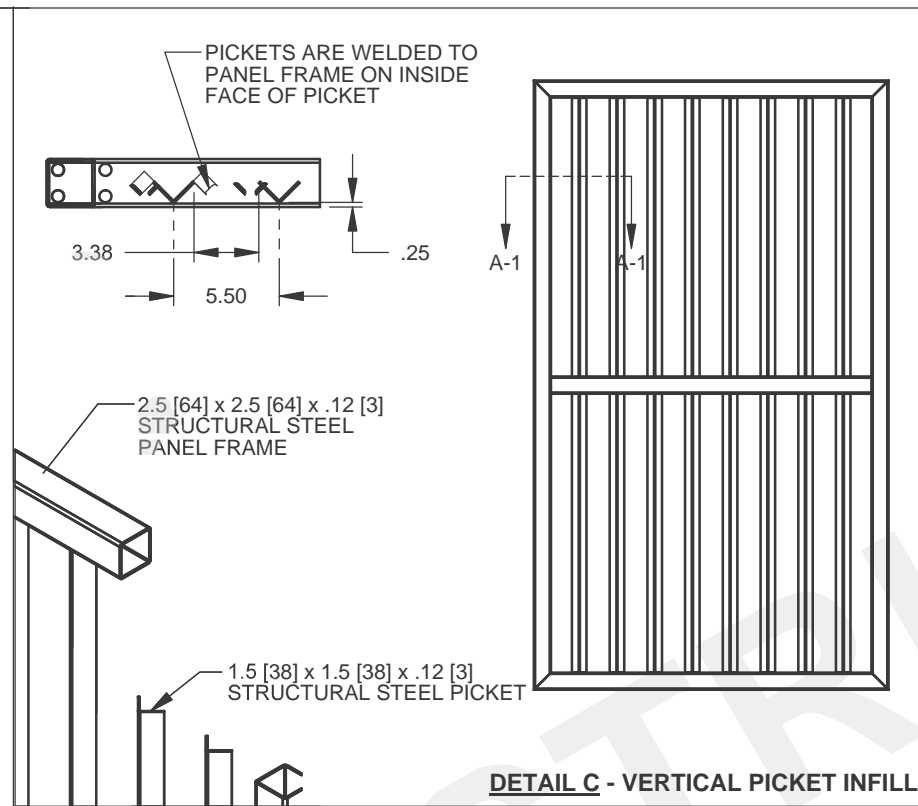
1. INSTALL 8 - 1" [25] HILTI HAS-E-16 ANCHOR BOLTS IN SPEEDGATE FOOTINGS. DRILLING TEMPLATE IS PROVIDED FOR ANCHOR BOLT INSTALLATION. REFER TO DETAIL A FOR FOOTING / ANCHOR BOLT INFORMATION.
2. SET LH & RH COLUMNS ON ANCHOR BOLTS AND SECURE USING SUPPLIED HARDWARE. COLUMNS MUST BE VERTICAL AND PLUMB AFTER INSTALLATION.
3. TERMINATE WIRING IN ELECTRICAL TERMINATION BOX LOCATED INSIDE OF GATE COLUMNS REFER TO DETAIL B FOR TERMINATION BOX LOCATION.

**INCLUDED WITH SPEEDGATE:**

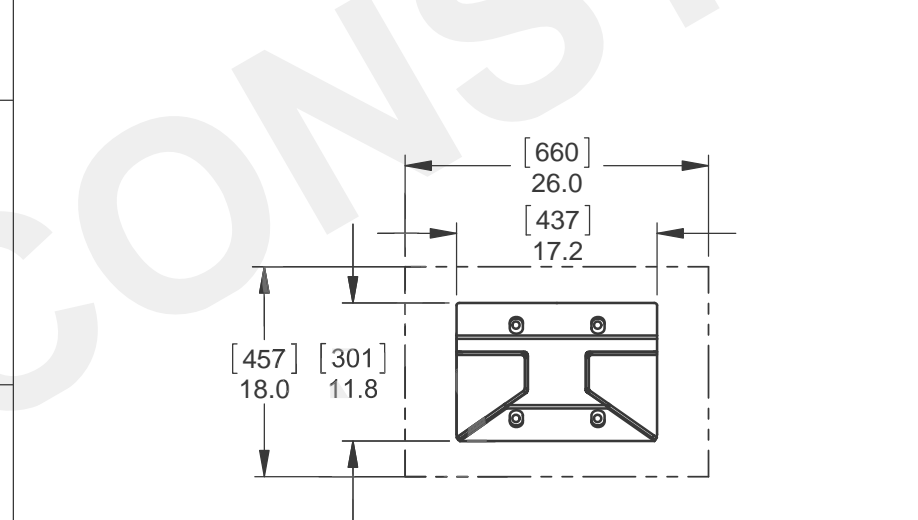
- 2 - ELECTRONIC GATE CONTROLLERS MOUNTED IN A 30" [762] x 30" [762] x 12" [305] NEMA 3R ENCLOSURE.
- ELECTRICAL HARNESS TO CONNECT GATE CONTROLLER TO DRIVE COMPONENTS. STANDARD HARNESS LENGTH ALLOWS FOR CONTROL ENCLOSURE TO BE MOUNTED UP TO 30 FT. [9144] FROM PRIMARY COLUMN. OPTIONAL EXTENDED HARNESS AVAILABLE, SEE NOTE ON SHEET 1.
- KEY AND LOCK FOR ALL ACCESS PANELS - REFER TO **DETAILS H-1 TO H-4** FOR AVAILABLE STYLES.

**NOT INCLUDED WITH SPEEDGATE:**

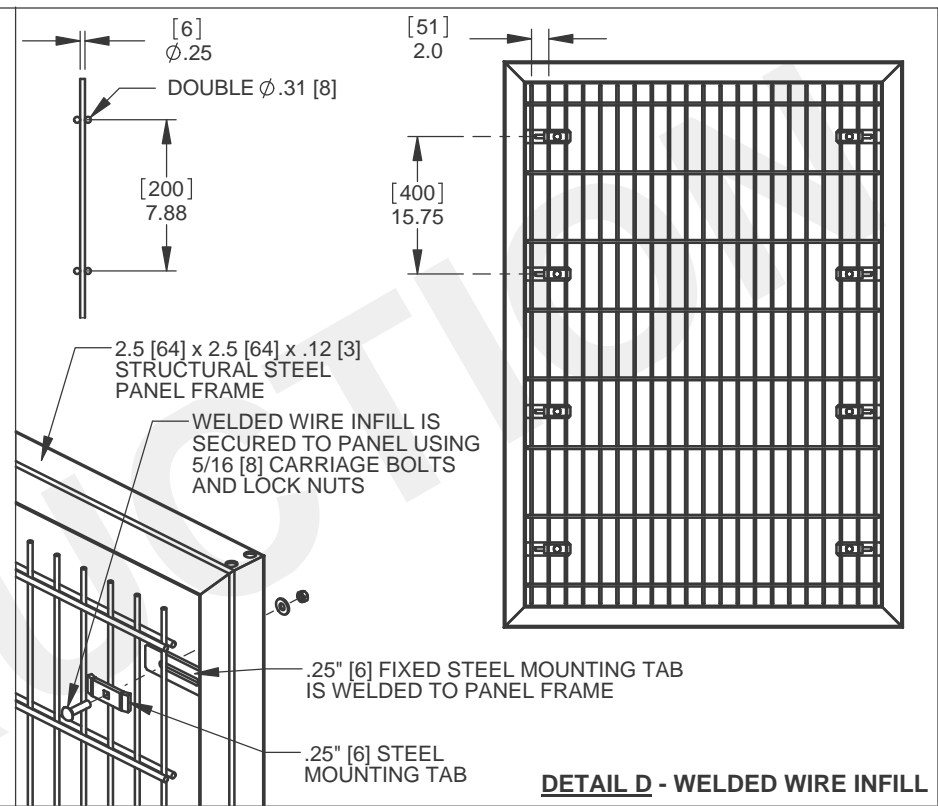
- VEHICLE DETECTION LOOPS, REFER TO SHEET 5 FOR LOOP SIZING AND LOCATIONS
- GROUT TO FILL GAP UNDER COLUMN BASE PLATES AFTER LEVELING IS COMPLETE.
- ALL GATE MOUNTING HARDWARE



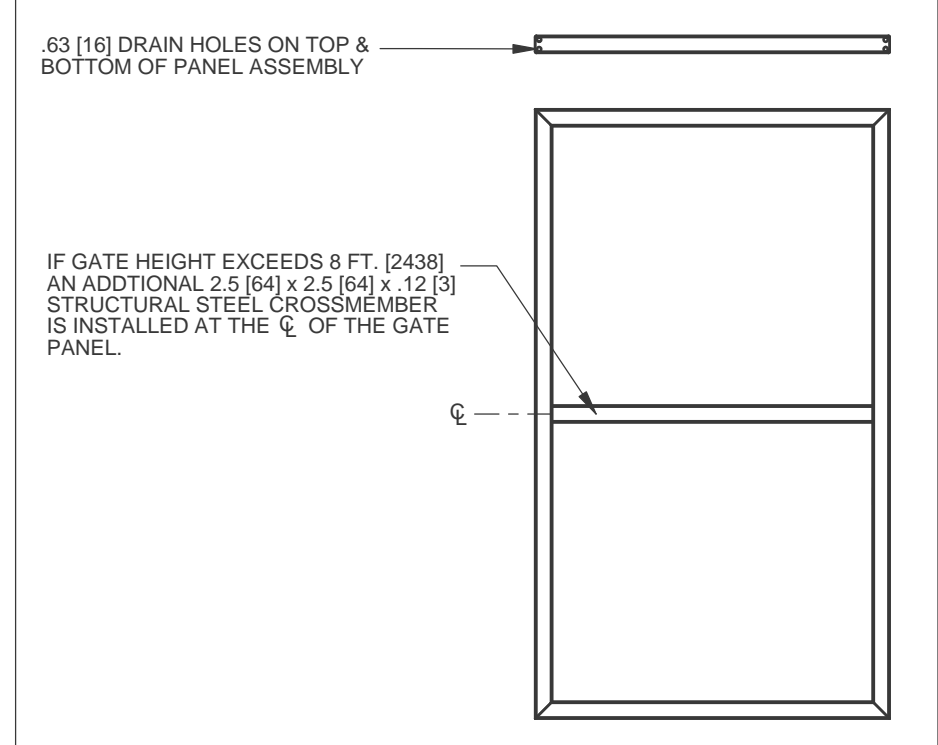
**DETAIL C - VERTICAL PICKET INFILL**



CENTER CATCH PLATE MUST BE ANCHORED TO A SUITABLE ROADWAY SURFACE. IF ROADWAY IS NOT SUITABLE FOR ANCHORING, AN 18" [457] x 30" [762] PAD SHOULD BE INSTALLED.

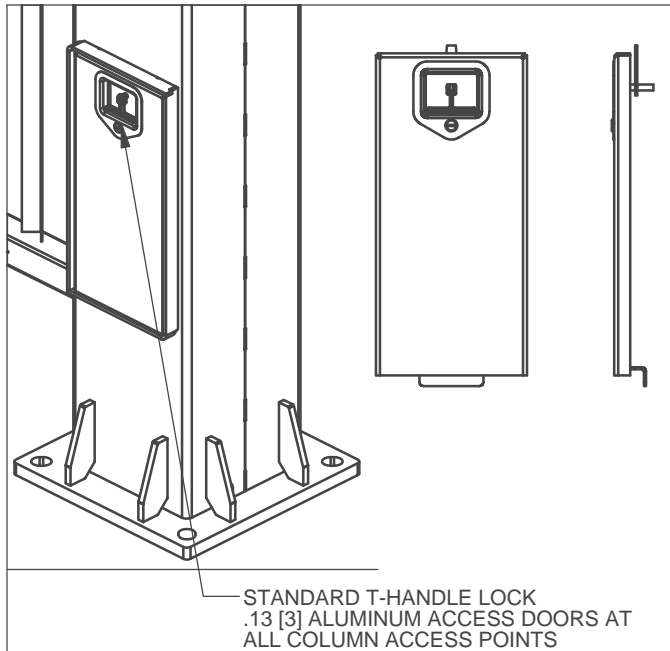


**DETAIL D - WELDED WIRE INFILL**

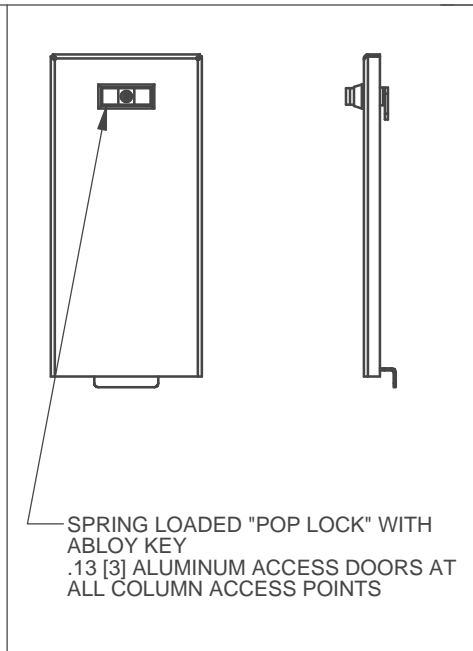


115 Lawson Crescent  
Winnipeg, Manitoba, Canada, R3P 1A6  
Phone: 1-866-300-1110  
Fax: 1-204-284-1868  
www.wallaceperimetersecurity.com

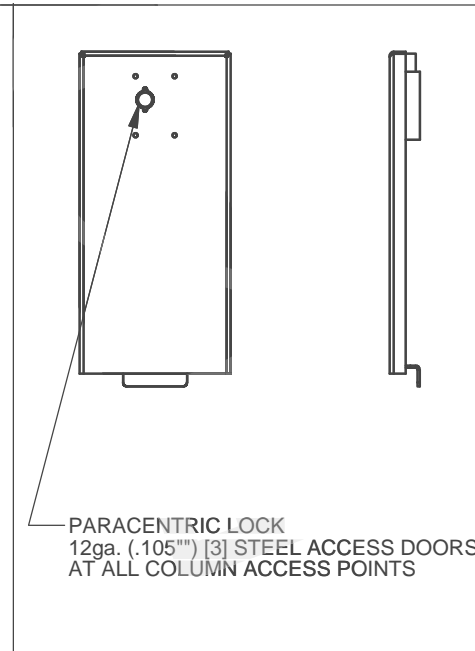
Description:		<b>PDXT</b>	
Customer / Project Name:		-	
Finish:		Date: 7/7/2017	
Drawing No. <b>PDXT-07-07-17</b>		Rev. Sheet: 2 of 6	



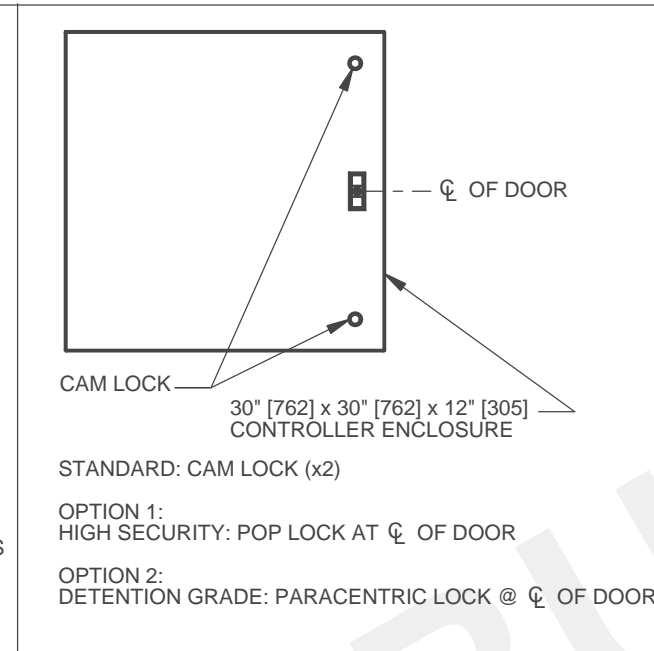
**DETAIL H-1:**  
STANDARD T-HANDLE ACCESS POINT LOCKS



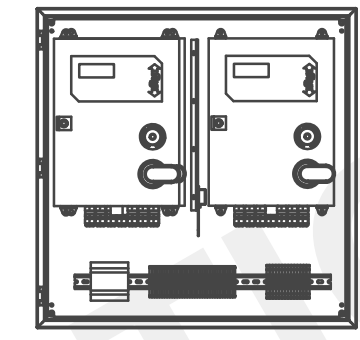
**DETAIL H-2:**  
OPTIONAL HIGH SECURITY LOCK



**DETAIL H-3:**  
OPTIONAL DETENTION GRADE LOCK



**DETAIL I-1:**  
OPTIONAL CONTROLLER ENCLOSURE DOOR LOCK



THE 30" [762] x 30" [762] x 12" [305] NEMA 3R ENCLOSURE CAN BE FITTED WITH OPTIONAL HEATING AND COOLING KITS TO ACCOMMODATE A WIDE RANGE OF TEMPERATURES.

**OPTIONAL HOT WEATHER PACKAGE INCLUDES:**

EXHAUST FAN, VENT GRILLES, RAIN SHROUDS AND THERMOSTAT.

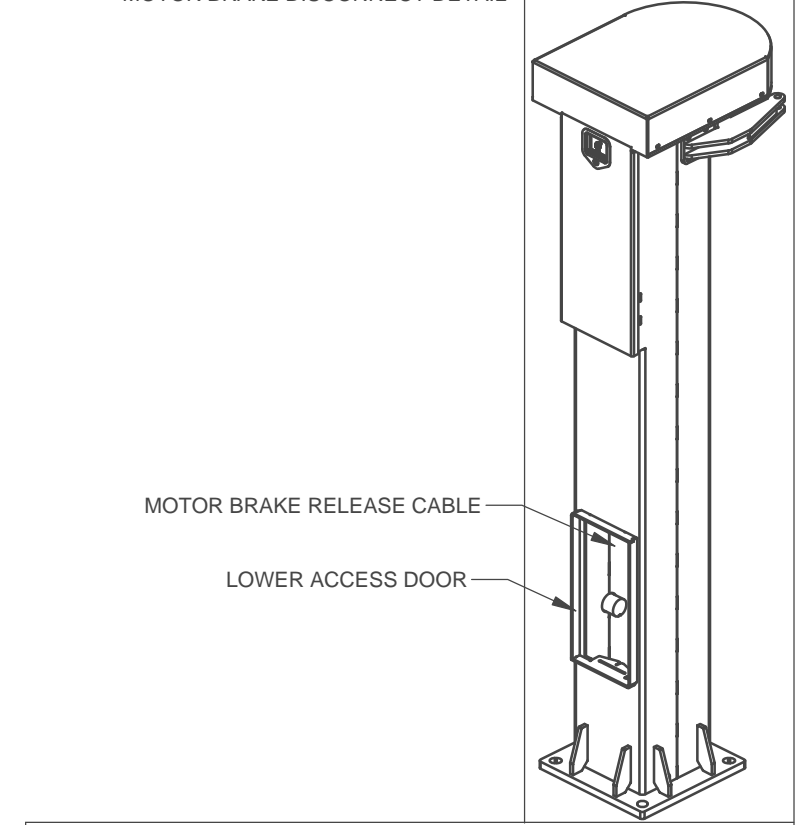
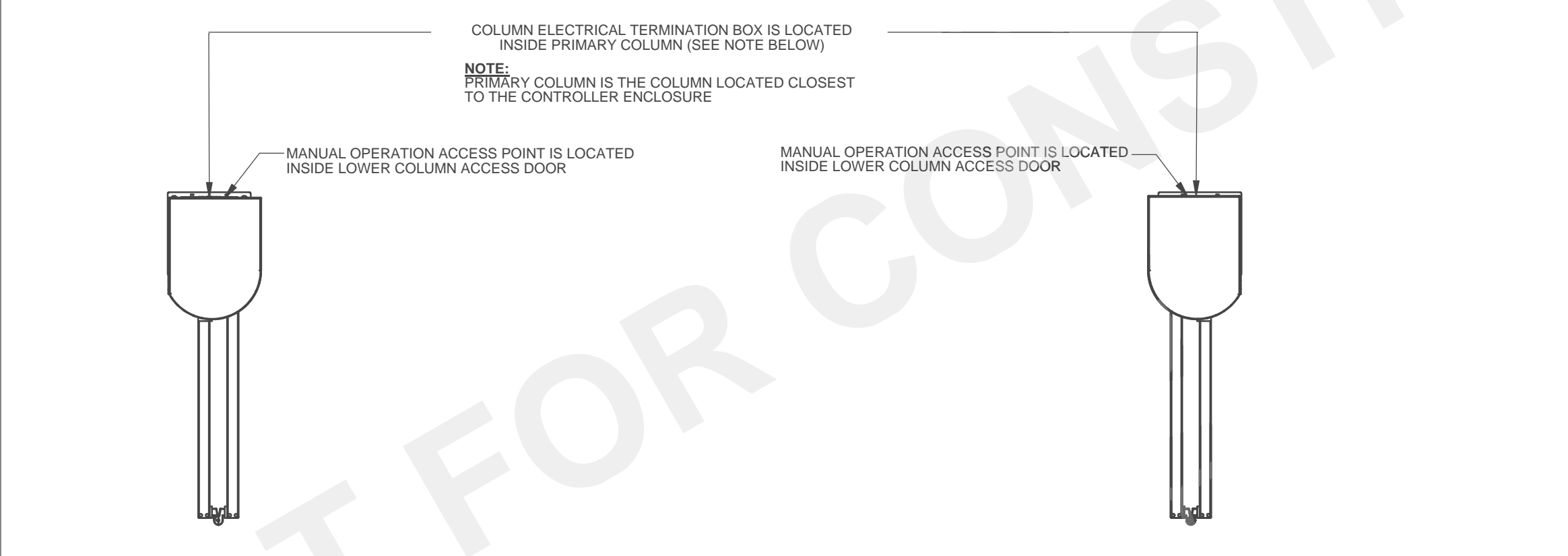
**OPTIONAL COLD WEATHER PACKAGE INCLUDES:**

320 WATT SELF-REGULATING HEATER, THERMAL COVER. (THERMAL COVER IS AVAILABLE ONLY IF CONTROLLER ENCLOSURE IS FREE STANDING)

**DETAIL J:**  
ENVIRONMENTAL CONTROL

**DETAIL K:** MOTOR BRAKE DISCONNECT / COLUMN ELECTRICAL TERMINATION BOX DETAIL

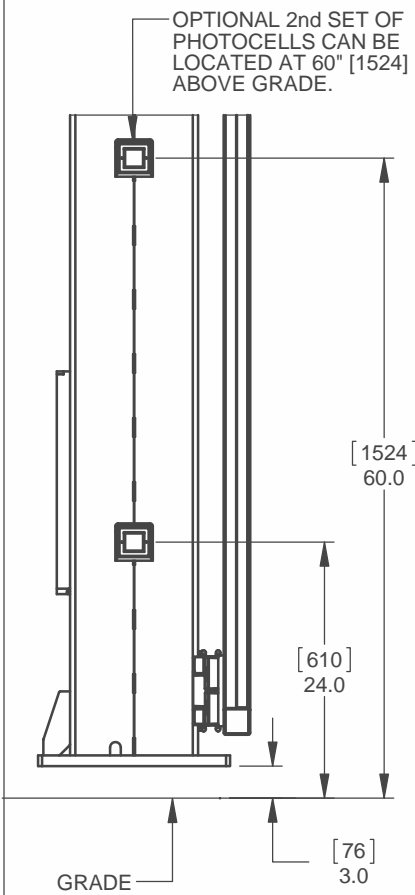
**DETAIL K-1:** COLUMN ELECTRICAL TERMINATION MOTOR BRAKE DISCONNECT DETAIL



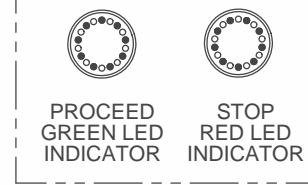
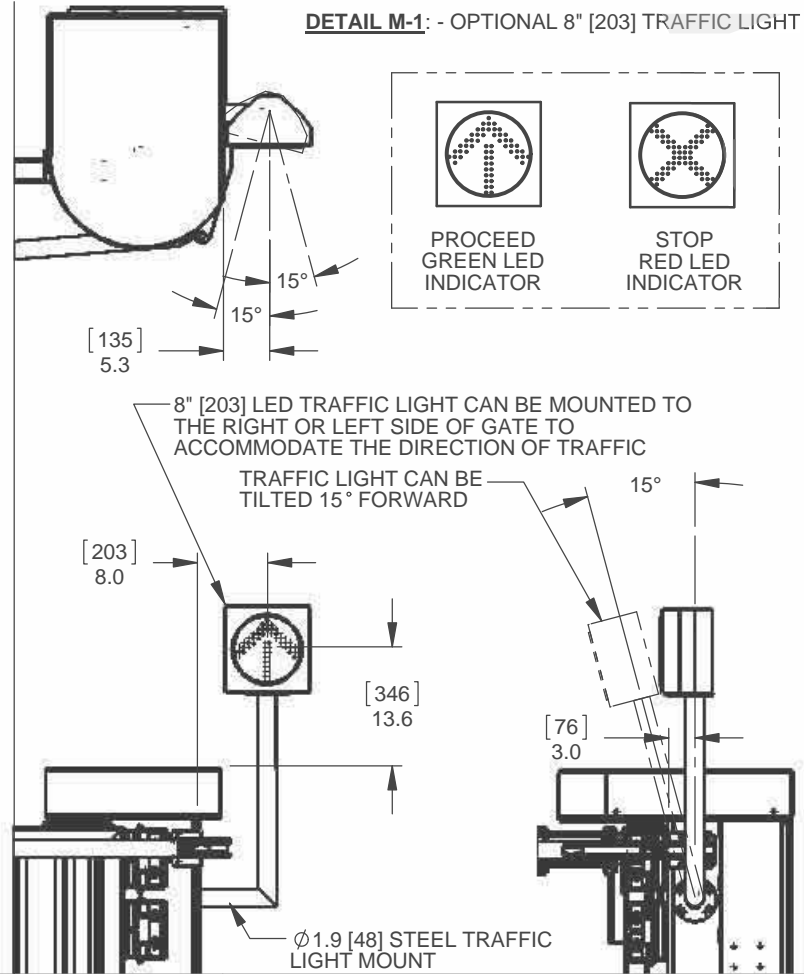
Description:		<b>PDXT</b>	
		POST DRIVE TRACKLESS SPEEDGATE STANDARD NOTES AND OPTIONS CONT'D	
Customer / Project Name:			
-			
Finish:		Date:	
SEE NOTES		7/7/2017	
Drawing No.		Rev.	
PDXT-07-07-17		Sheet:	
		3 of 6	

115 Lawson Crescent  
Winnipeg, Manitoba, Canada, R3P 1A6  
Phone: 1-866-300-1110  
Fax: 1-204-284-1868  
www.wallaceperimetersecurity.com

**DETAIL L: - PHOTOCELLS**

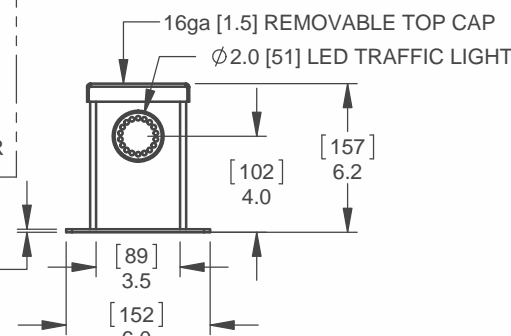


**DETAIL M-1: - OPTIONAL 8" [203] TRAFFIC LIGHT**

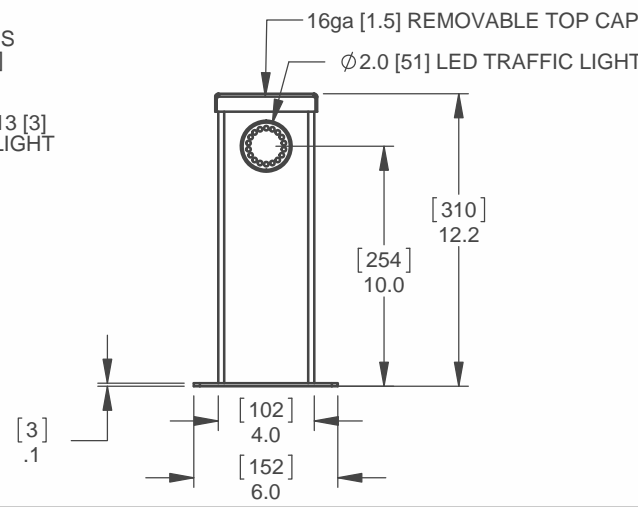


TRAFFIC LIGHT HOUSING IS SECURED TO COLUMN THE TOP COVER AND CAN BE LOCATED TO THE RIGHT OR LEFT SIDE OF GATE TO ACCOMMODATE THE DIRECTION OF TRAFFIC LOCATION AN ORIENTATION OF RAFFIC LIGHT CAN BE ADJUSTED TO SUIT SITE REQUIREMENTS.

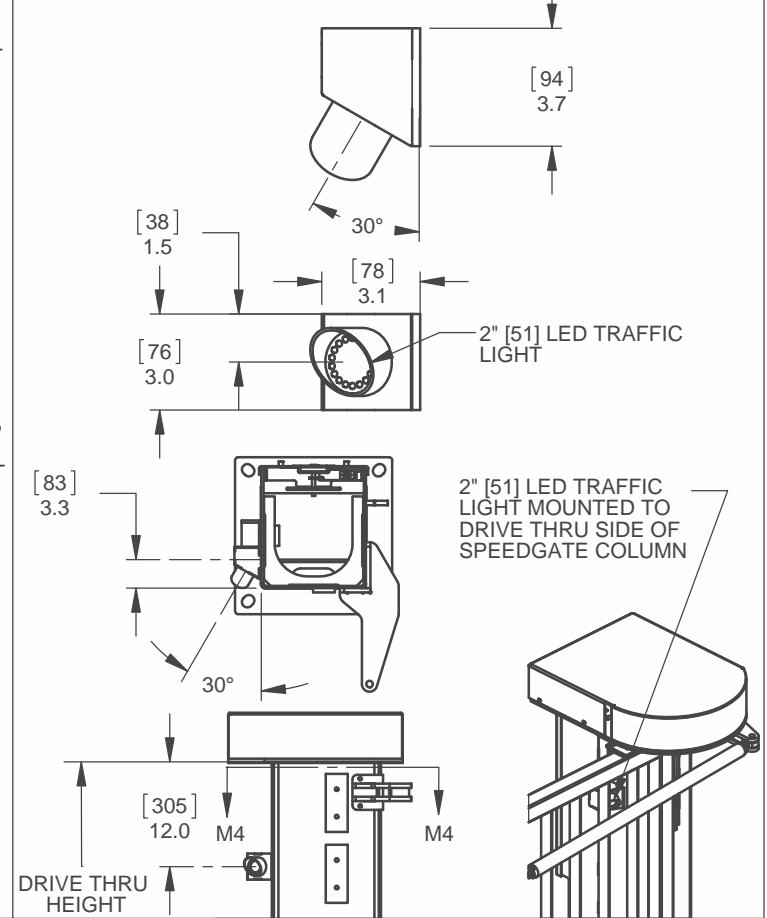
**DETAIL M-2: - OPTIONAL 2" [51] TRAFFIC LIGHT 4" [102] HEIGHT**



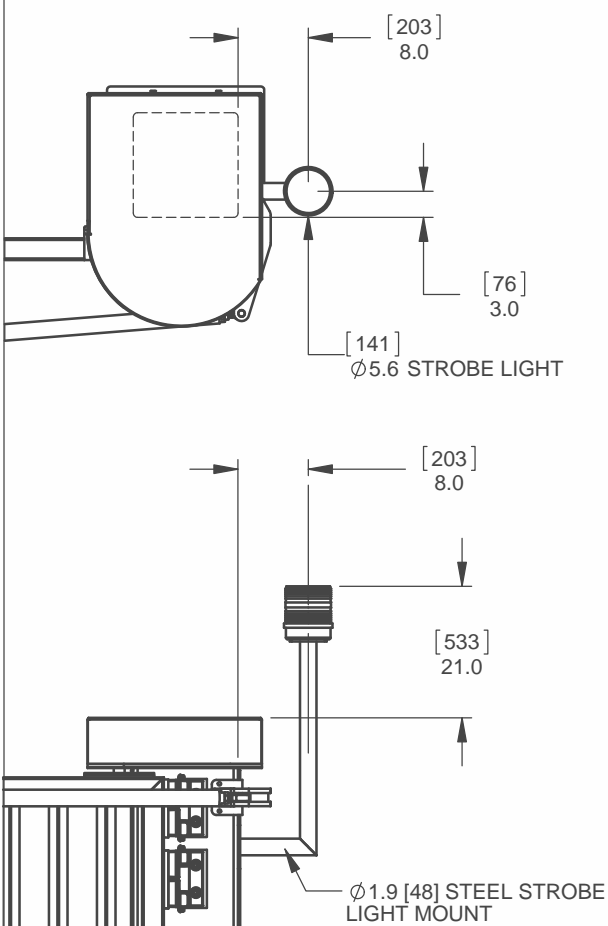
**DETAIL M-3: - OPTIONAL 2" [51] TRAFFIC LIGHT 10" [254] HEIGHT**



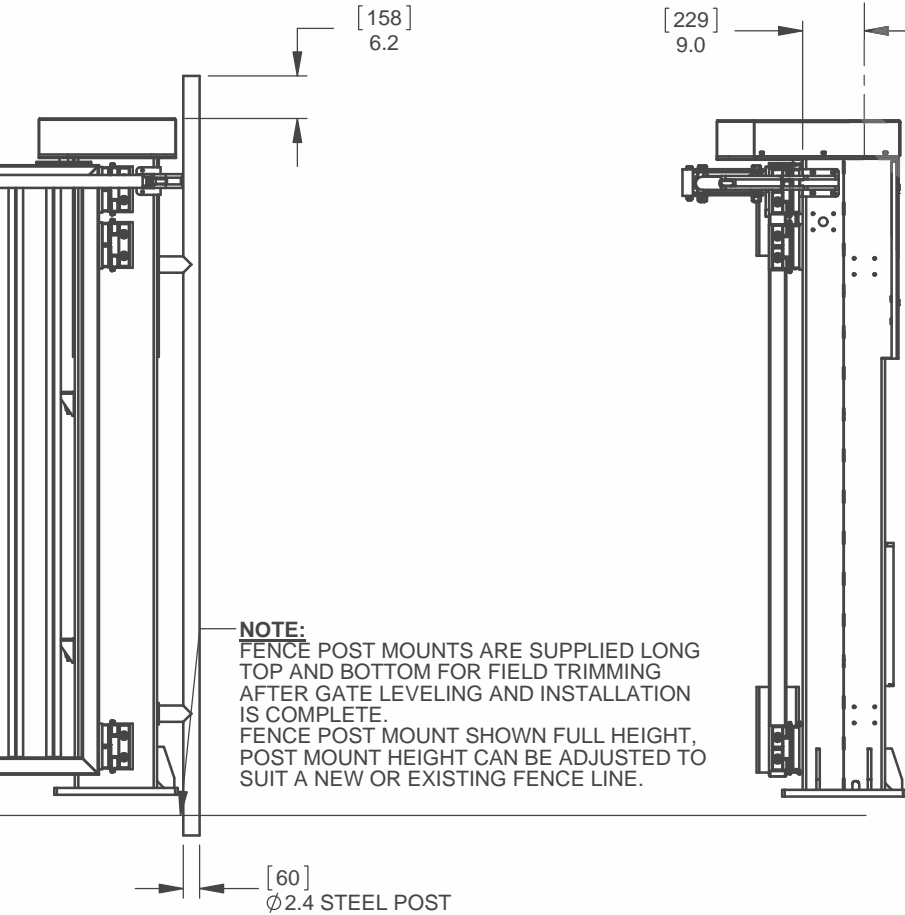
**DETAIL M-4: - OPTIONAL 2" [51] DRIVE THRU MOUNTED TRAFFIC LIGHT**



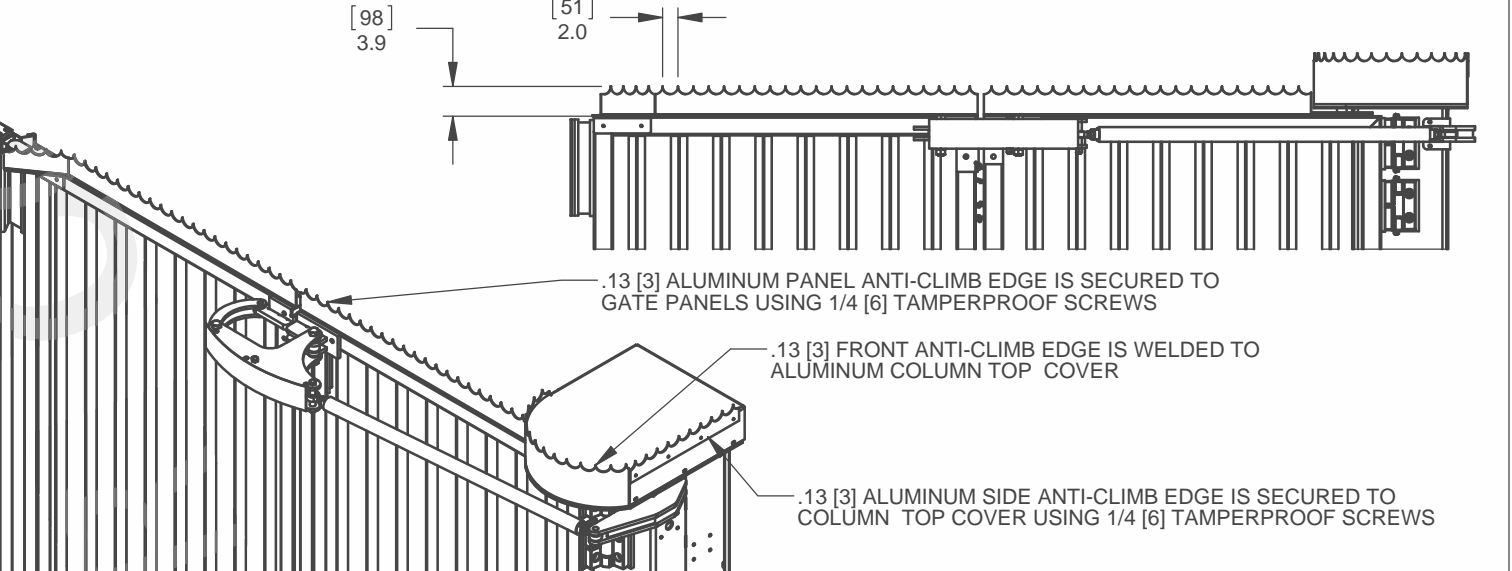
**DETAIL N: - OPTIONAL STROBE LIGHT**



**DETAIL O: - OPTIONAL FENCE POST MOUNTS**



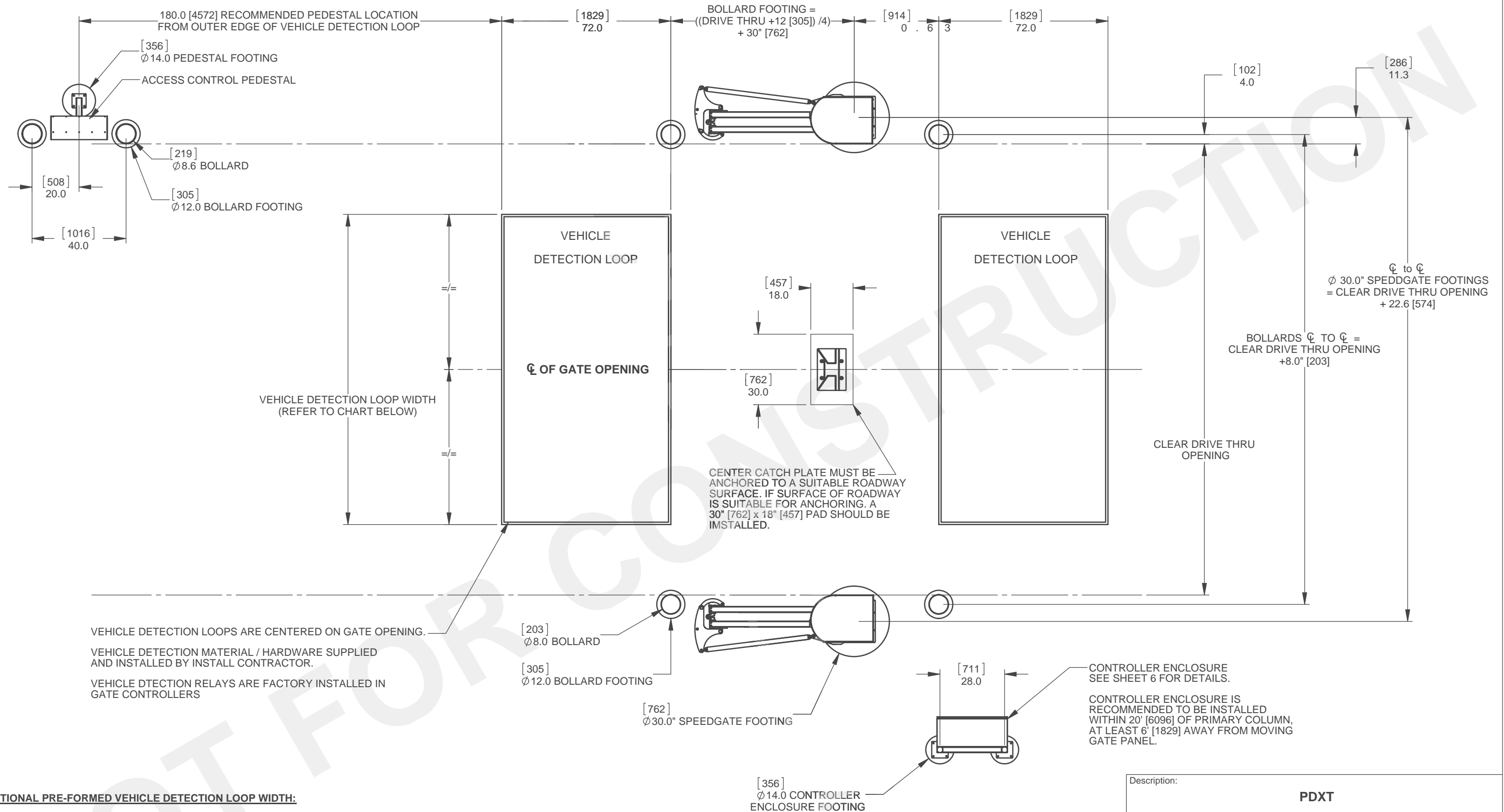
**DETAIL Q: - ALUMINUM ANTI-CLIMB EDGE**



Description:		<b>PDXT</b>	
		<b>POST DRIVE TRACKLESS SPEEDGATE STANDARD NOTES AND OPTIONS</b>	
Customer / Project Name:		-	
Finish:		Date:	7/7/2017
Drawing No.	<b>PDXT-07-07-17</b>	Rev.	Sheet: 4 of 6



115 Lawson Crescent  
Winnipeg, Manitoba, Canada, R3P 1A6  
Phone: 1-866-300-1110  
Fax: 1-204-284-1868  
www.wallaceperimetersecurity.com



**OPTIONAL PRE-FORMED VEHICLE DETECTION LOOP WIDTH:**

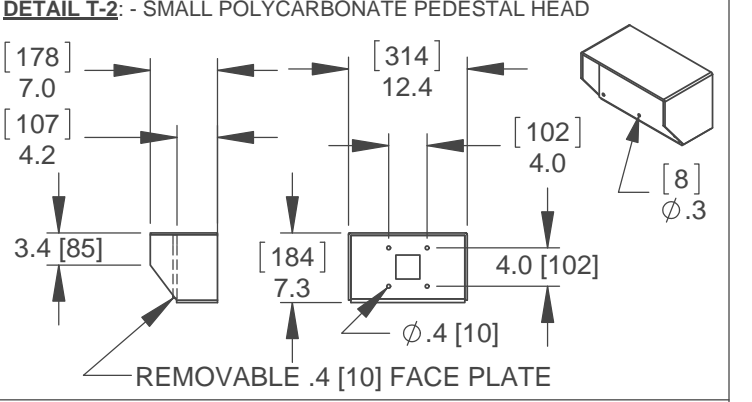
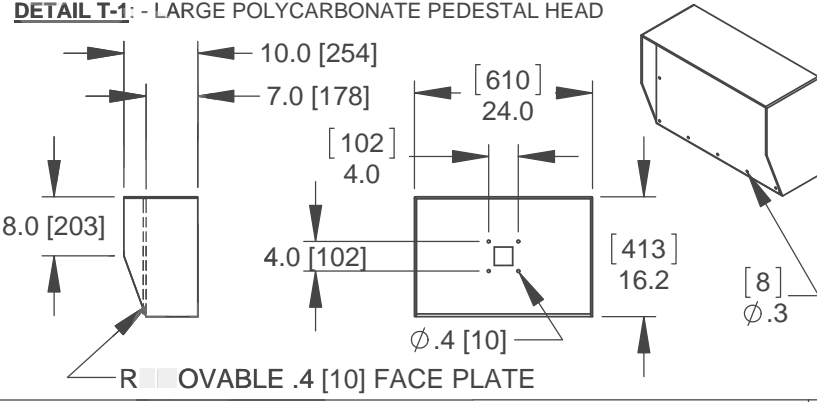
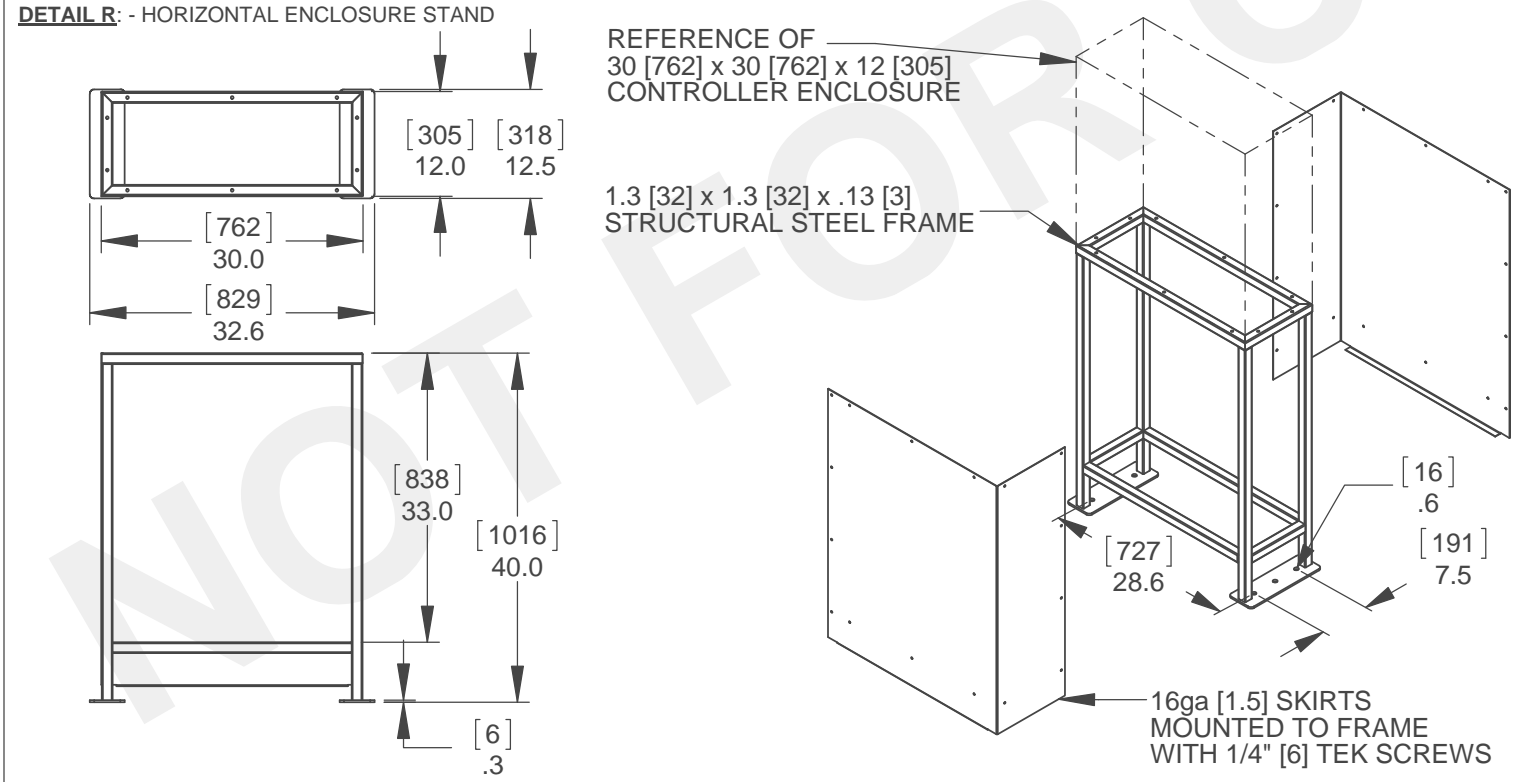
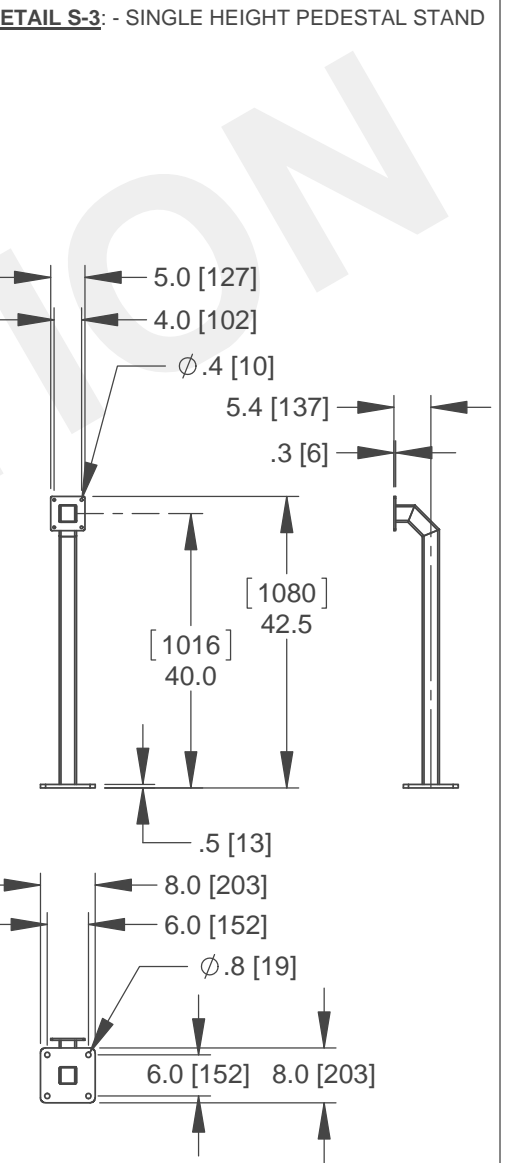
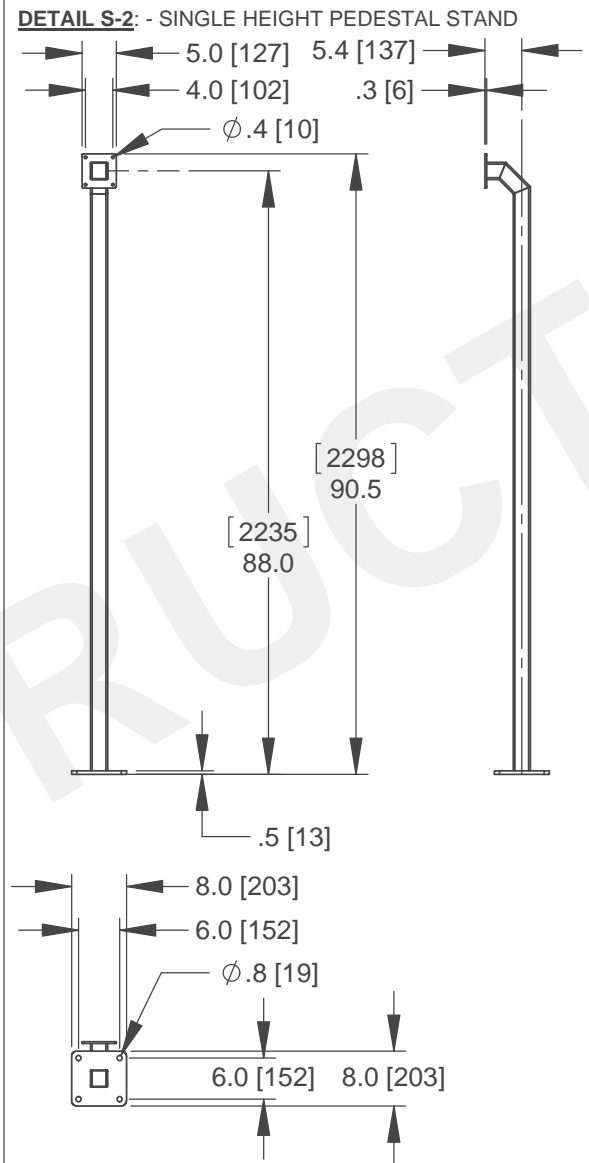
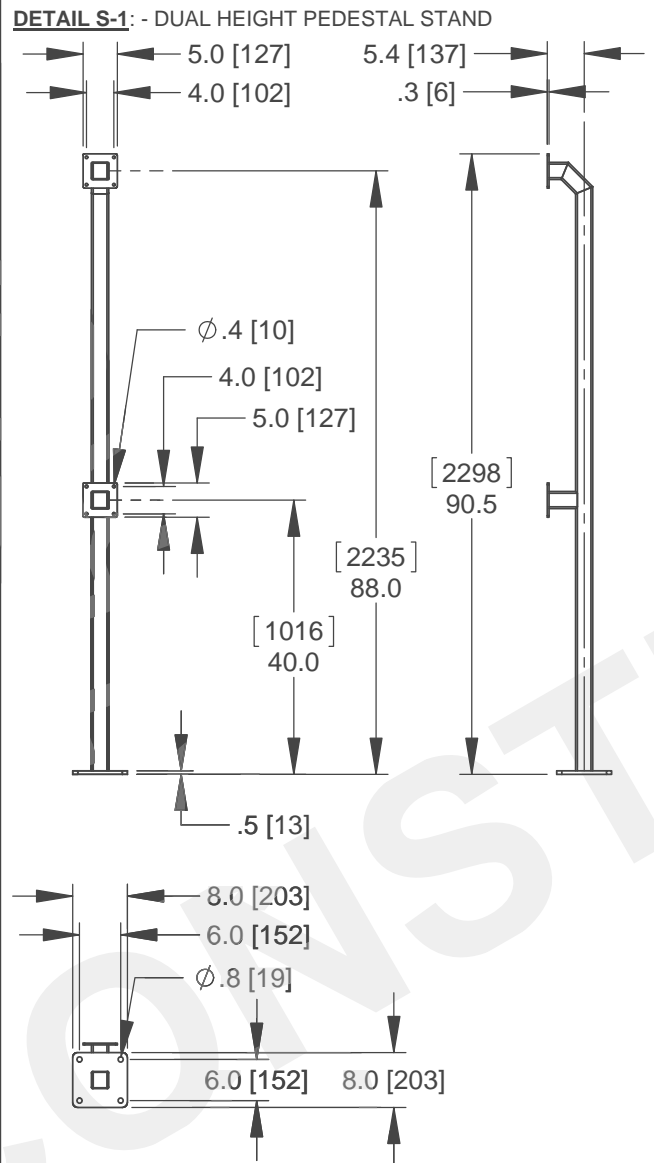
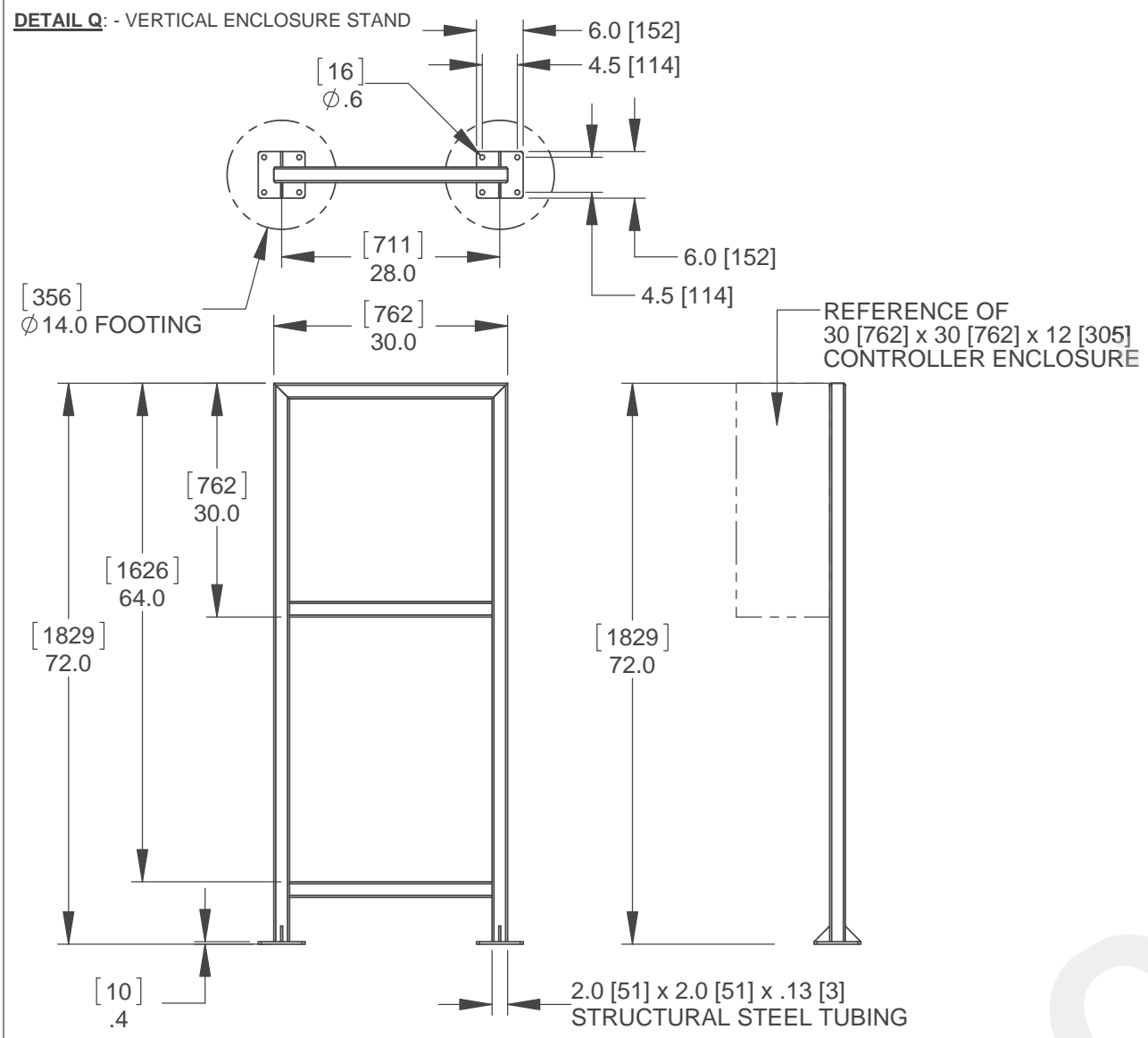
Clear Drive Thru Opening	Loop Width
10' [3048]	96" [2438]
12' [3658]	96" [2438]
14' [4267]	120" [3048]
16' [4877]	144" [3658]
18' [5486]	168" [4267]
20' [6096]	192" [4877]

**NOTE:**  
BOLLARD FOUNDATION LOCATIONS ARE PROVIDED AS REFERENCE ONLY  
ALL FINAL MATERIALS AND DIMENSIONS ARE SUPPLIED AND INSTALLED BY OTHERS



115 Lawson Crescent  
Winnipeg, Manitoba, Canada, R3P 1A6  
Phone: 1-866-300-1110  
Fax: 1-204-284-1868  
www.wallaceperimetersecurity.com

Description:		<b>PDXT</b>	
		POST DRIVE TRACKLESS SPEEDGATE FOOTINGS / VEHICLE DETECTION LOOP LOCATIONS	
Customer / Project Name:		-	
Finish:		Date:	7/7/2017
Drawing No.	<b>PDXT-07-07-17</b>	Rev.	
		Sheet:	5 of 6



**WALLACE PERIMETER SECURITY**

115 Lawson Crescent  
Winnipeg, Manitoba, Canada, R3P 1A6  
Phone: 1-866-300-1110  
Fax: 1-204-284-1868  
www.wallaceperimetersecurity.com

Description:		<b>PDXT</b>	
CONTROLLER ENCLOSURE STANDS		PEDESTAL HEADS / PEDESTAL STANDS	
Customer / Project Name:			
-			
Finish:	SEE NOTES	Date:	7/7/2017
Drawing No.	PDXT-07-07-17	Rev.	Sheet:
			6 of 6