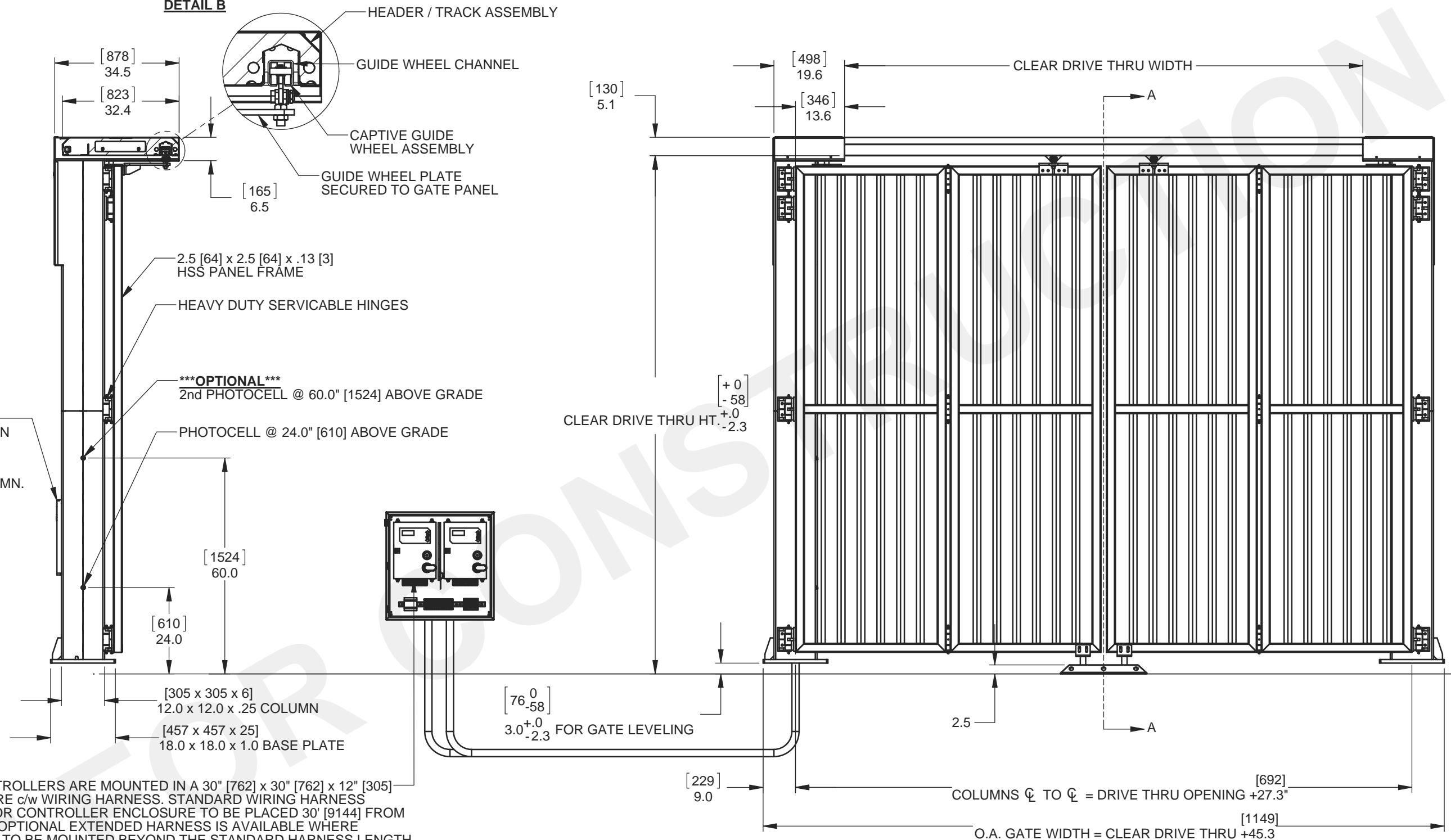


SECTION A-A

DETAIL B



NOTE:

- MANUAL OPERATION ACCESS POINT LOCATED INSIDE THE LOWER COLUMN ACCESS DOOR
- ELECTRICAL TERMINATION BOX IS LOCATED INSIDE THE PRIMARY COLUMN. PRIMARY COLUMN IS THE COLUMN LOCATED CLOSEST TO THE CONTROLLER ENCLOSURE.

2 ELECTRICAL CONTROLLERS ARE MOUNTED IN A 30" [762] x 30" [762] x 12" [305] NEMA 3R ENCLOSURE c/w WIRING HARNESS. STANDARD WIRING HARNESS LENGTH ALLOWS FOR CONTROLLER ENCLOSURE TO BE PLACED 30' [9144] FROM PRIMARY COLUMN. OPTIONAL EXTENDED HARNESS IS AVAILABLE WHERE CONTROLLERS ARE TO BE MOUNTED BEYOND THE STANDARD HARNESS LENGTH. CONTACT WALLACE INTERNATIONAL FOR DETAILS. MAXIMUM DISTANCE FROM CONTROLLER ENCLOSURE TO PRIMARY COLUMN IS DETERMINED BY DRIVE THRU WIDTH. CONTROLLERS, ENCLOSURE AND HARNESS BY WALLACE INTERNATIONAL CONDUIT, BY OTHERS. SEE SHEET 2 FOR CONDUIT SIZES, QUANTITIES AND REQUIREMENTS.

POWER REQUIREMENTS - 208 / 240V SINGLE PHASE, 20 AMP

DRIVE THRU SIZES:

WIDTH	MAX. HEIGHT
SIZES TO 18' [5486]	18' [5486]
19' [5791] TO 24' [7318]	16' [4879]

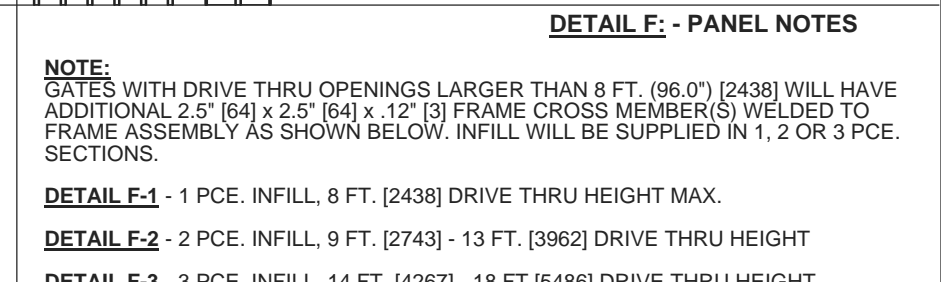
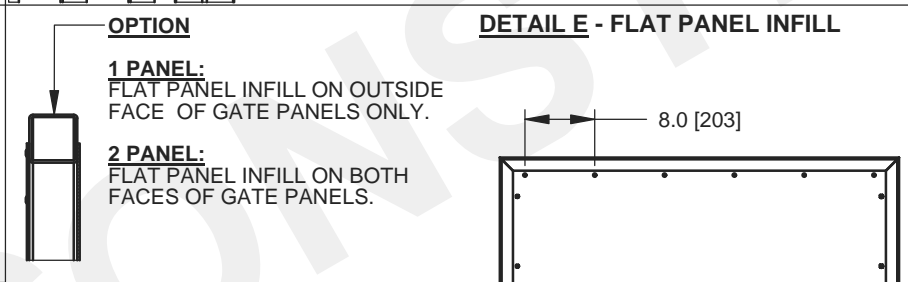
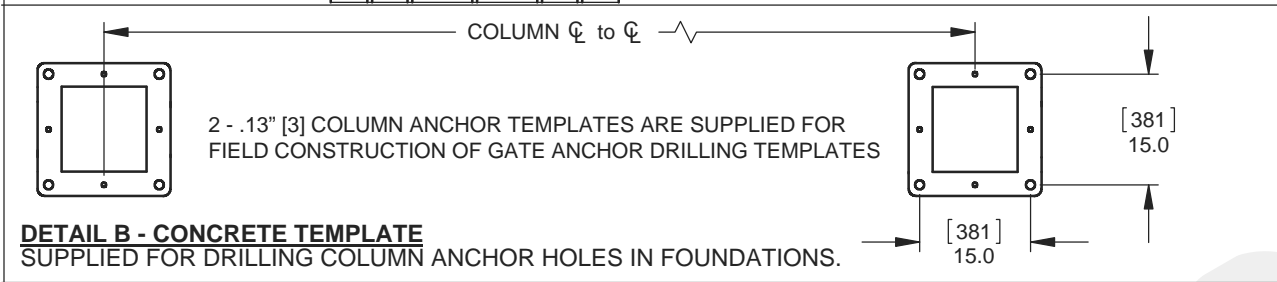
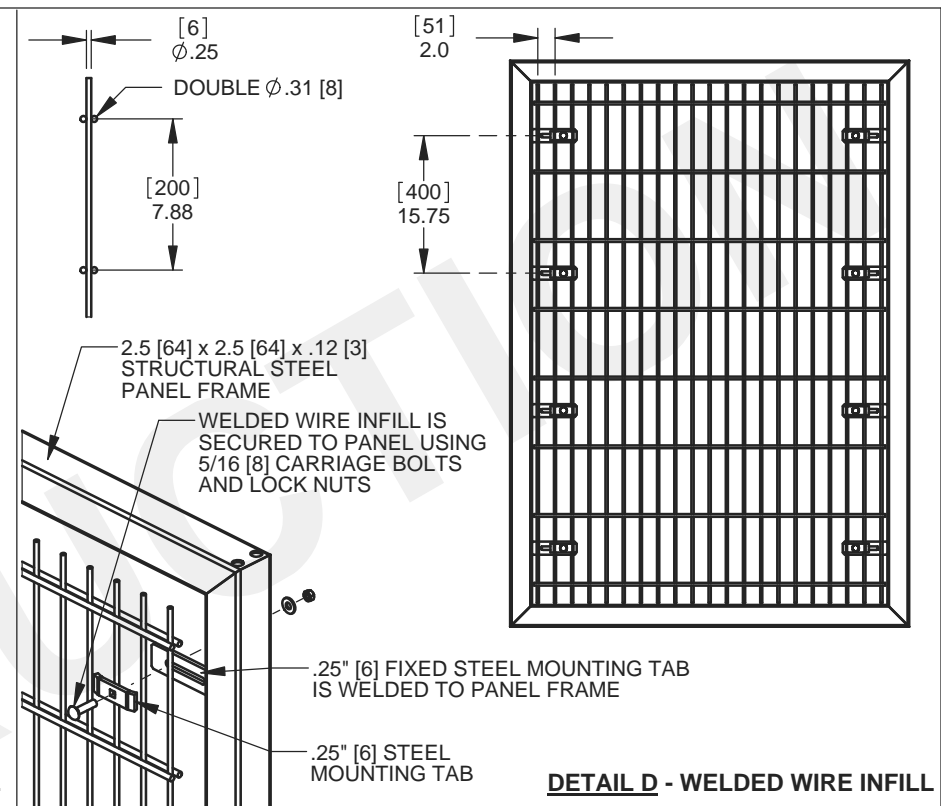
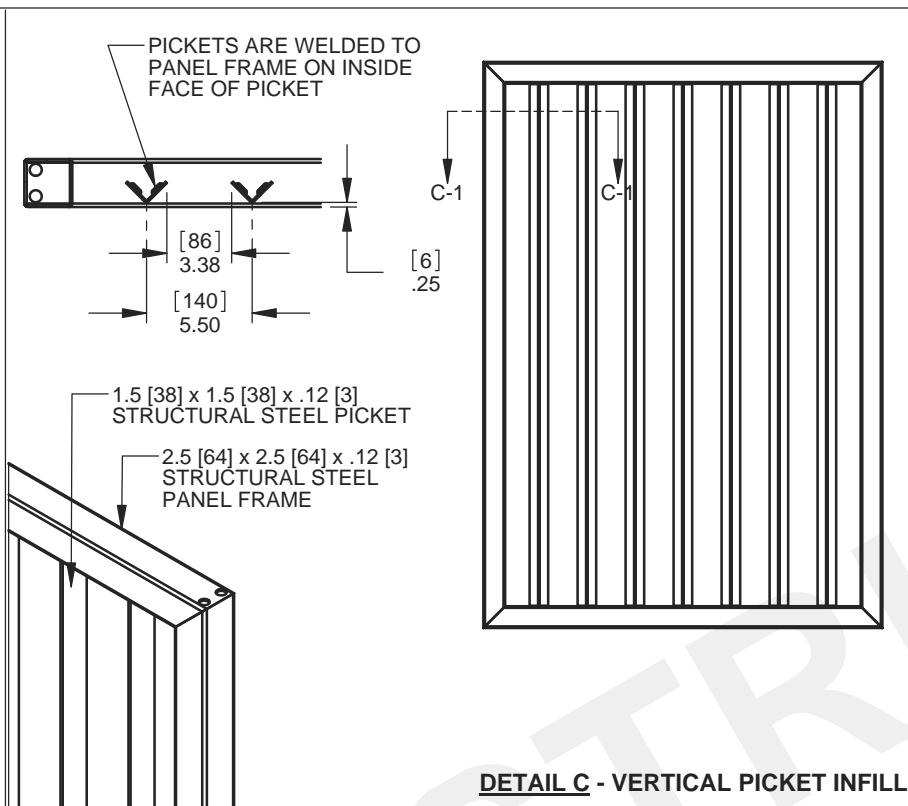
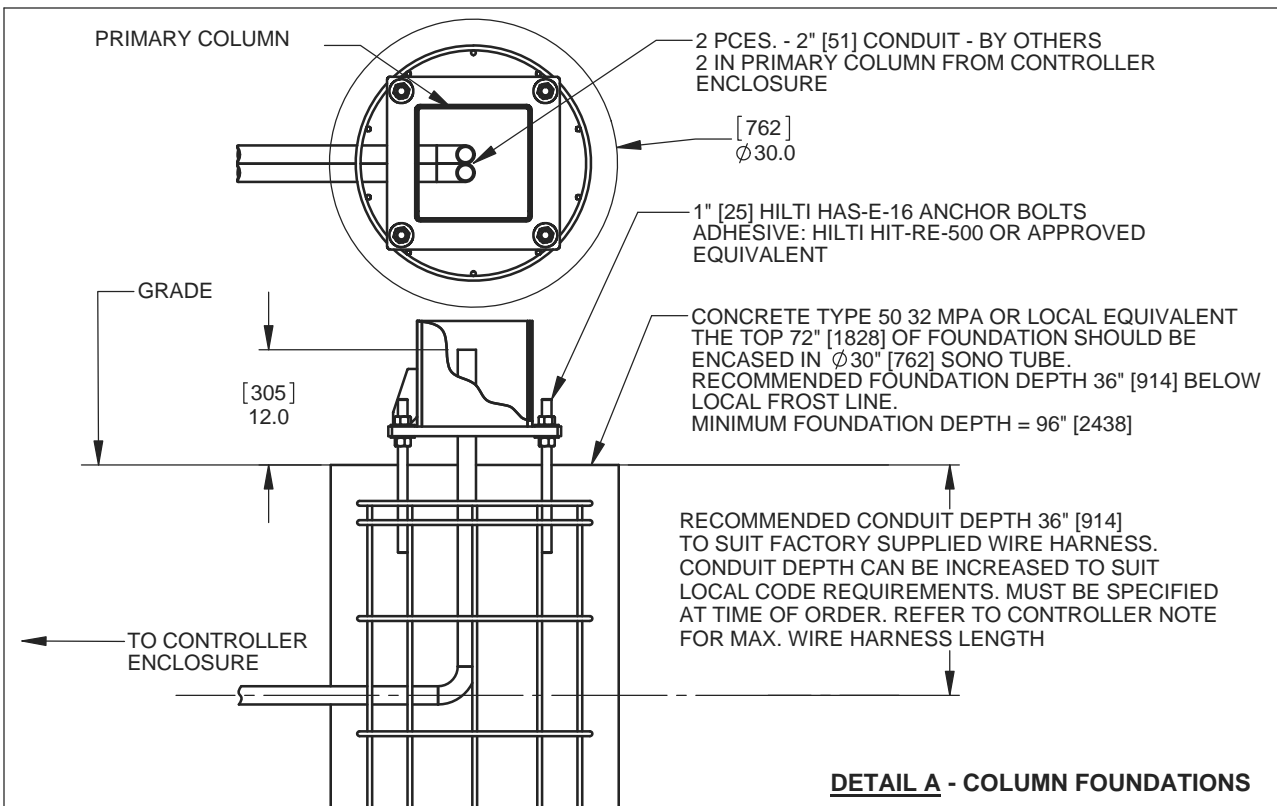
WALLACE
PERIMETER SECURITY

115 Lawson Crescent
Winnipeg, Manitoba, Canada, R3P 1A6
Phone: 1-866-300-1110
Fax: 1-204-284-1868
www.wallaceperimetersecurity.com

Description: PDTT POST DRIVE TOP TRACK SPEEDGATE	
Customer / Project Name: -	
Finish: SEE NOTES	Date: 7/7/2017
Drawing No. PDTT-07-07-17	Rev. Sheet: 1 of 6

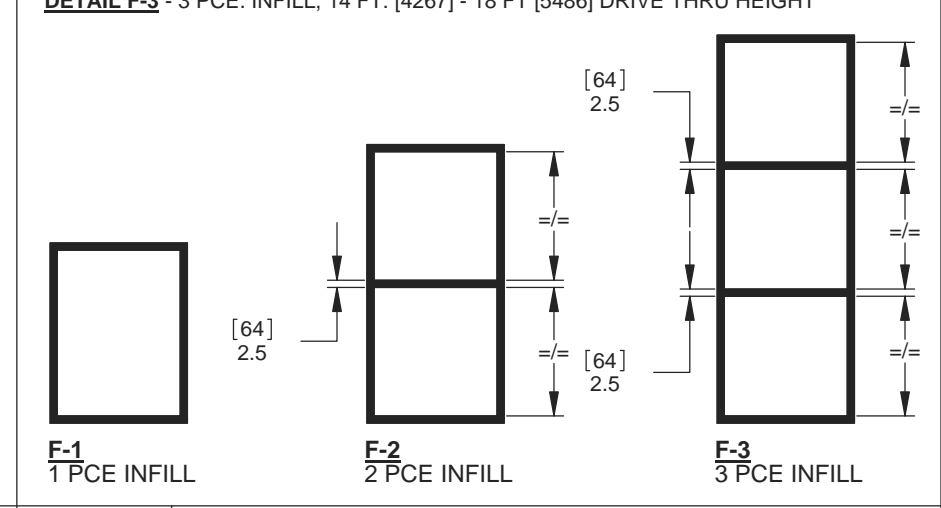
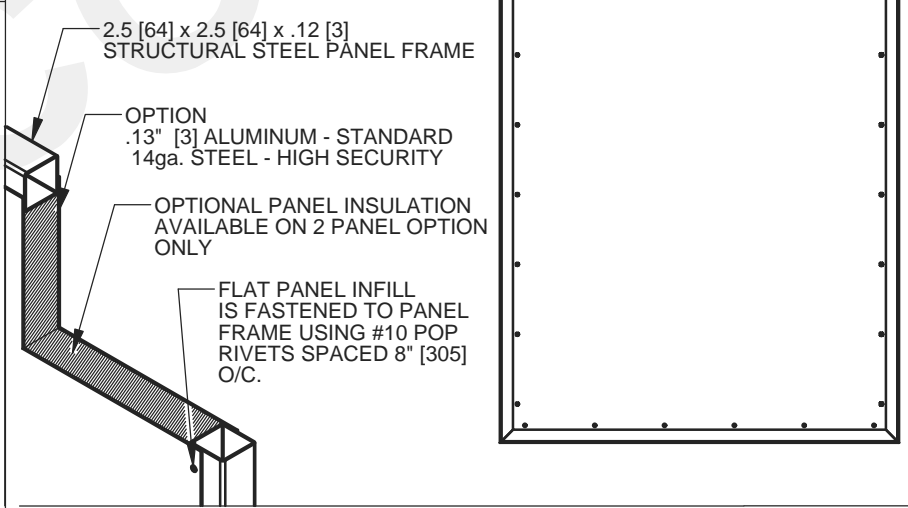
NOTE:
- DIMENSIONS ARE SHOWN IN INCHES, DIMENSIONS SHOWN IN [] ARE IN MILLIMETERS.

FINISH:
- STANDARD FINISH: HOT DIPPED GALVANIZED FOR ALL STEEL COMPONENTS.
- OPTIONAL POWDER COAT PAINT FINISH AVAILABLE



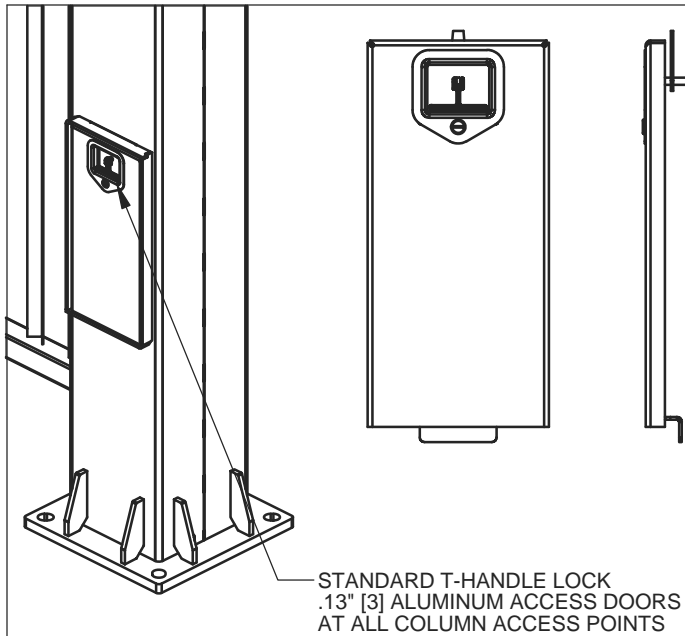
- INSTALLATION PROCEDURE**
- INSTALL 8 - 1" [25] HILTI HAS-E-16 ANCHOR BOLTS IN SPEEDGATE FOOTINGS. DRILLING TEMPLATE IS PROVIDED FOR ANCHOR BOLT INSTALLATION. REFER TO **DETAIL A** FOR FOOTING / ANCHOR BOLT INFORMATION.
 - SET LH & RH COLUMNS ON ANCHOR BOLTS AND SECURE USING SUPPLIED HARDWARE. COLUMNS MUST BE VERTICAL AND PLUMB AFTER INSTALLATION.
 - INSTALL TOP TRACK / HEADER
 - INSTALL LH AND RH GATE PANELS
 - INSTALL DRIVE PIN GUIDE WHEEL ASSEMBLIES.
 - TERMINATE WIRING IN ELECTRICAL TERMINATION BOX LOCATED INSIDE OF GATE COLUMNS REFER TO **DETAIL K-1**, ON SHEET 3 FOR TERMINATION BOX LOCATION.

- INCLUDED WITH SPEEDGATE:**
- 2 - ELECTRONIC GATE CONTROLLERS MOUNTED IN A 30" [762] x 30" [762] x 12" [305] NEMA 3R ENCLOSURE.
 - ELECTRICAL HARNESS TO CONNECT GATE CONTROLLER TO DRIVE COMPONENTS. STANDARD HARNESS LENGTH ALLOWS FOR CONTROL ENCLOSURE TO BE MOUNTED UP TO 30 FT. [9144] FROM PRIMARY COLUMN. OPTIONAL EXTENDED HARNESS AVAILABLE, SEE NOTE ON SHEET 1
 - KEY AND LOCK FOR ALL ACCESS PANELS, REFER TO **DETAILS H1 - H4** FOR AVAILABLE STYLES.
 - ALL GATE MOUNTING HARDWARE
- NOT INCLUDED WITH SPEEDGATE:**
- VEHICLE DETECTION LOOPS, REFER TO SHEET 5 FOR LOOP SIZING AND LOCATIONS
 - GROUT TO FILL GAP UNDER COLUMN BASE PLATES AFTER LEVELING IS COMPLETE.

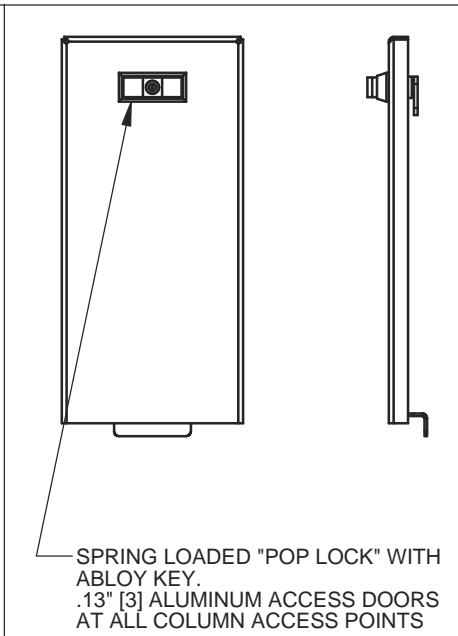


115 Lawson Crescent
Winnipeg, Manitoba, Canada, R3P 1A6
Phone: 1-866-300-1110
Fax: 1-204-284-1868
www.wallaceperimetersecurity.com

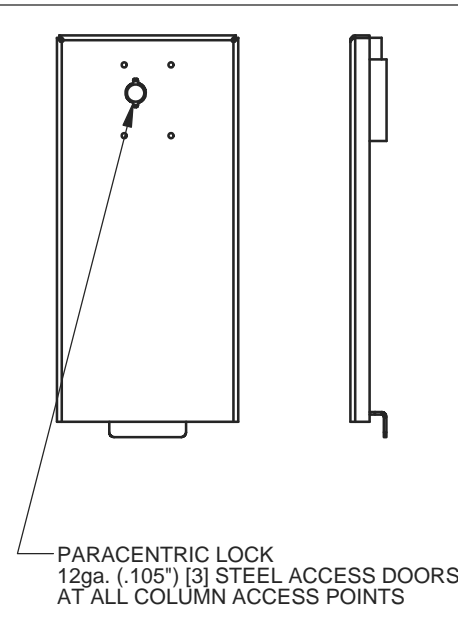
Description:		PDTT	
Customer / Project Name:		-	
Finish:	Date:	7/7/2017	
Drawing No.	Rev.	Sheet:	
PDTT-07-07-17		2 of 6	



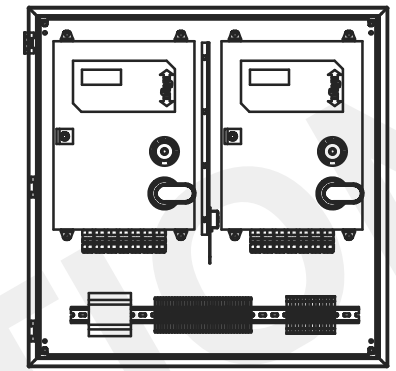
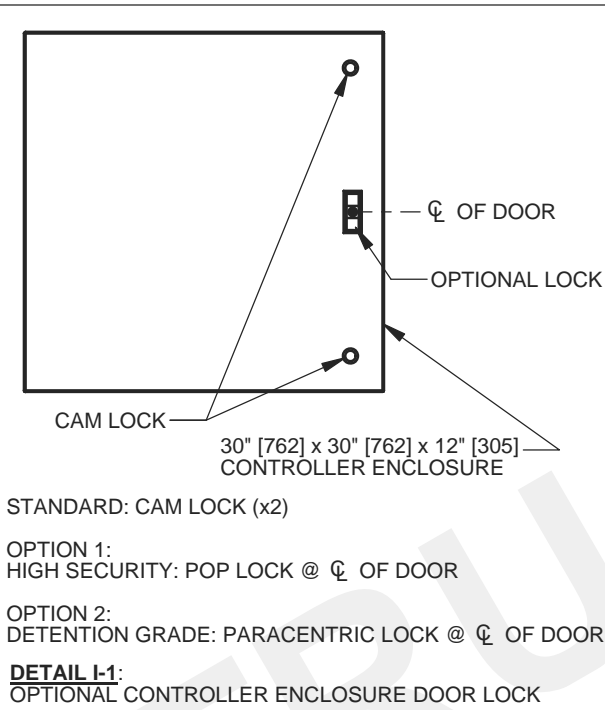
DETAIL H-1:
STANDARD T-HANDLE ACCESS POINT LOCK



DETAIL H-2:
OPTIONAL HIGH SECURITY LOCK



DETAIL H-3:
OPTIONAL DETENTION GRADE LOCK



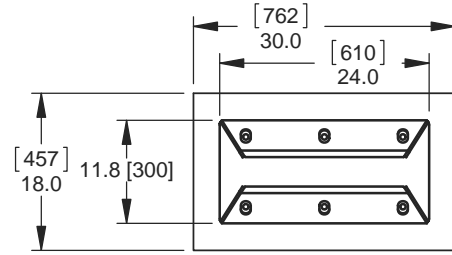
30" [762] x 30" [762] x 12" [305] NEMA 3R ENCLOSURE CAN BE FITTED WITH OPTIONAL HEATING AND COOLING KITS TO ACCOMMODATE A WIDE RANGE OF TEMPERATURES.

OPTIONAL HOT WEATHER KIT INCLUDES:
EXHAUST FAN, VENT GRILLES, RAIN SHROUDS AND THERMOSTAT.

OPTIONAL COLD WEATHER KIT INCLUDES:
320 WATT SELF-REGULATING, THERMAL COVER, (THERMAL COVER IS AVAILABLE ONLY IF CONTROLLER ENCLOSURE IS FREE STANDING)

DETAIL J-1:
ENVIRONMENTAL CONTROLS

DETAIL G - CENTER CATCH PLATE ANCHORING



CENTER CATCH PLATE MUST BE ANCHORED TO A SUITABLE SURFACE. IF ROADWAY IS NOT SUITABLE FOR ANCHORING, AN 18" [457] x 30" [762] PAD SHOULD BE INSTALLED.

DETAIL K:

MOTOR BRAKE DISCONNECT / COLUMN ELECTRICAL TERMINATION BOX DETAIL

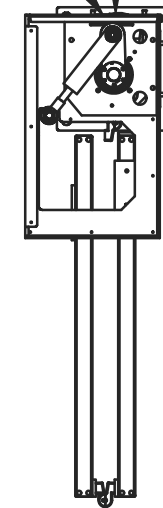
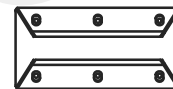
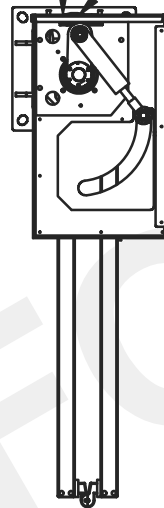
COLUMN ELECTRICAL TERMINATION BOX IS LOCATED INSIDE PRIMARY COLUMN (SEE NOTE BELOW)

NOTE:
PRIMARY COLUMN IS THE COLUMN THAT IS LOCATED CLOSEST TO CONTROLLER ENCLOSURE

MANUAL OPERATION ACCESS POINT IS LOCATED INSIDE LOWER COLUMN ACCESS DOOR.

MANUAL OPERATION ACCESS POINT IS LOCATED INSIDE LOWER COLUMN ACCESS DOOR.

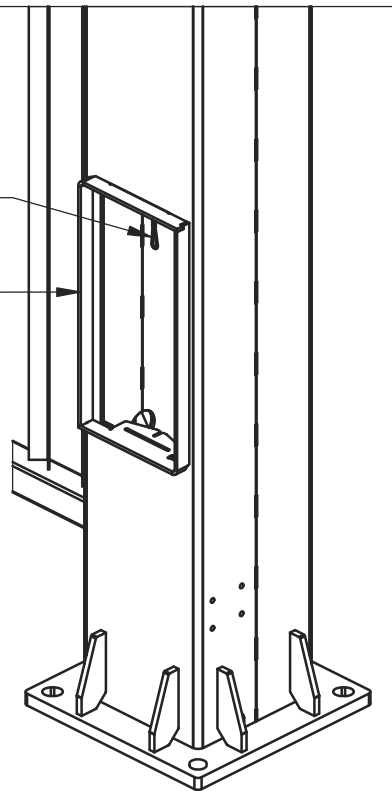
VIEWS SHOWN WITH GATE PANELS IN THE OPEN POSITION WITH TOP COVERS AND HEADER ASSEMBLY REMOVED



DETAIL K-1: - COLUMN ACCESS TERMINATION BRAKE DISCONNECT DETAIL

MOTOR BRAKE RELEASE CABLE

LOWER ACCESS DOOR



Description:

PDTT

POST DRIVE TOP TRACK SPEED GATE
STANDARD NOTES AND OPTIONS CONT'D

Customer / Project Name:

Finish:

Drawing No.

PDTT-07-07-17

Rev.

Date:

7/7/2017

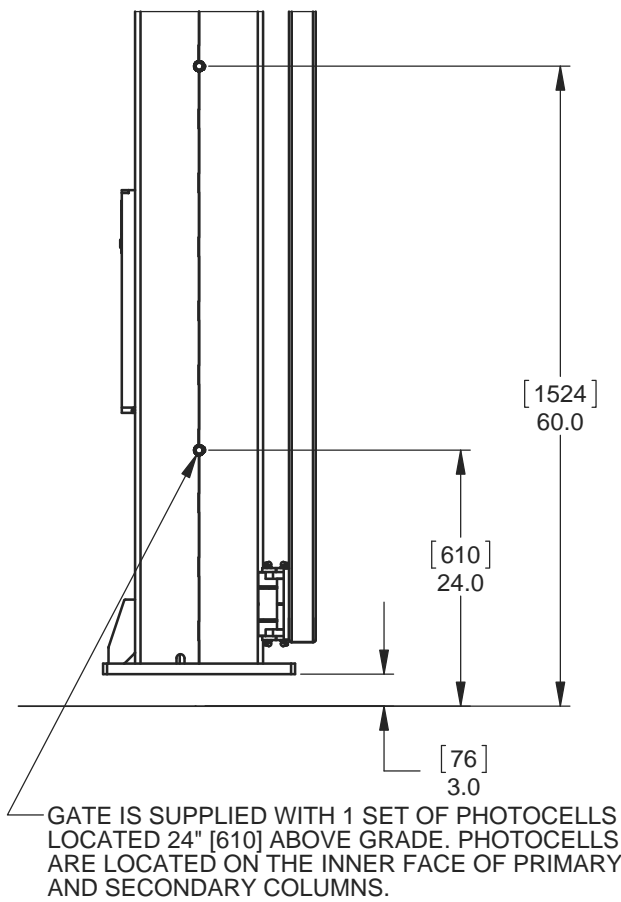
Sheet:

3 of 6

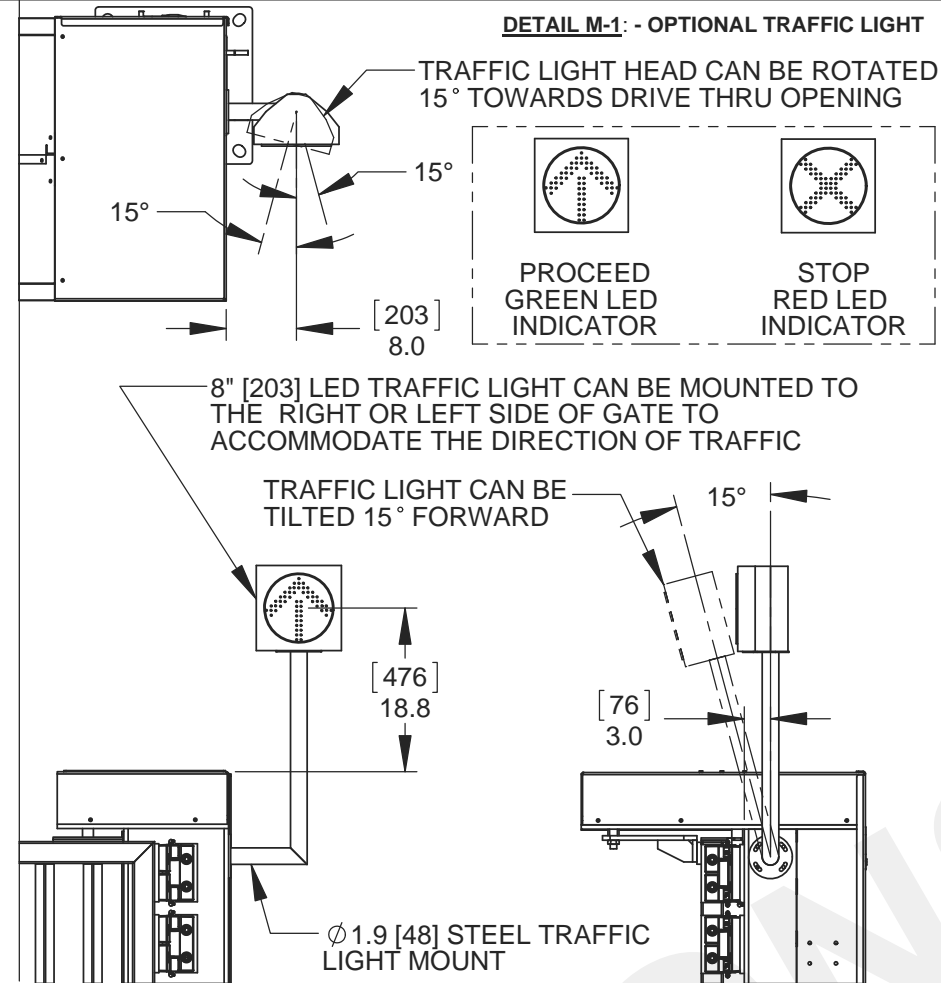


115 Lawson Crescent
Winnipeg, Manitoba, Canada, R3P 1A6
Phone: 1-866-300-1110
Fax: 1-204-284-1868
www.wallaceperimetersecurity.com

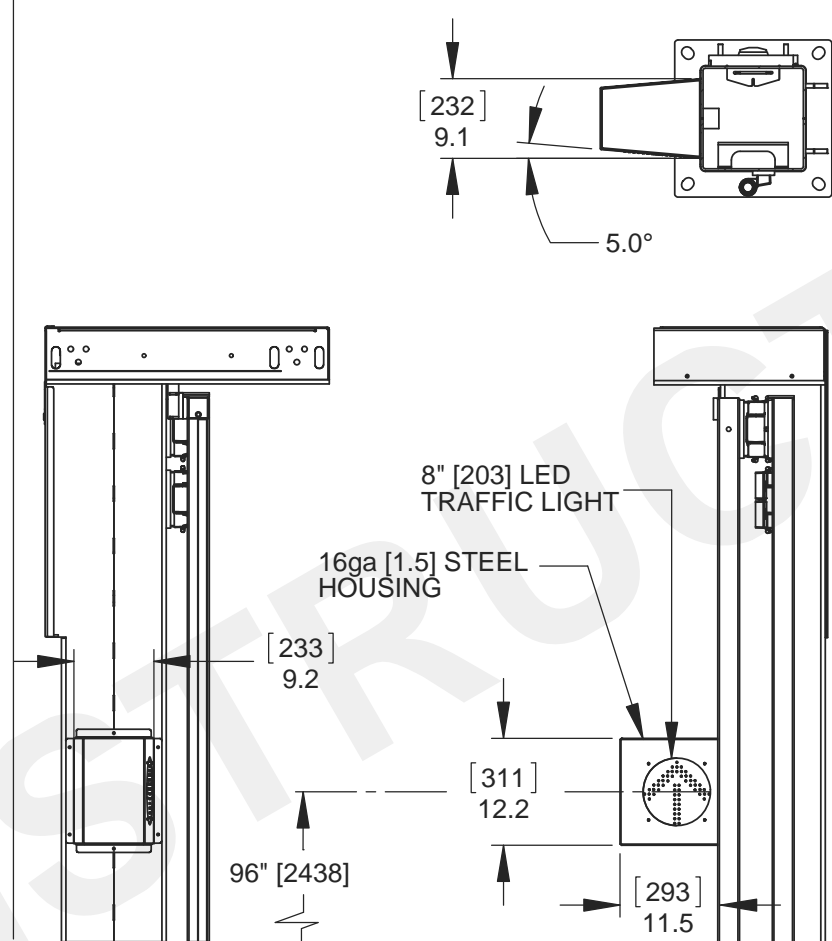
DETAIL L: - PHOTOCELLS



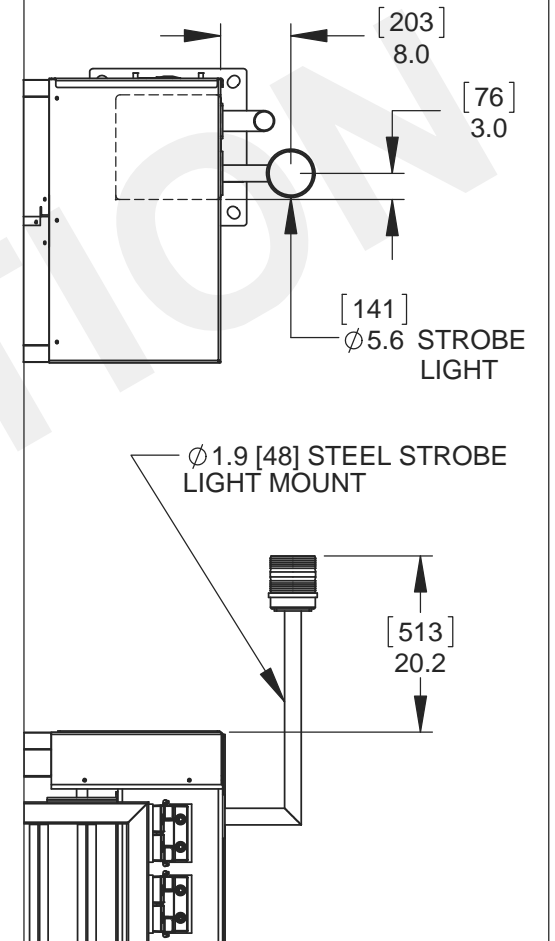
DETAIL M-1: - OPTIONAL TRAFFIC LIGHT



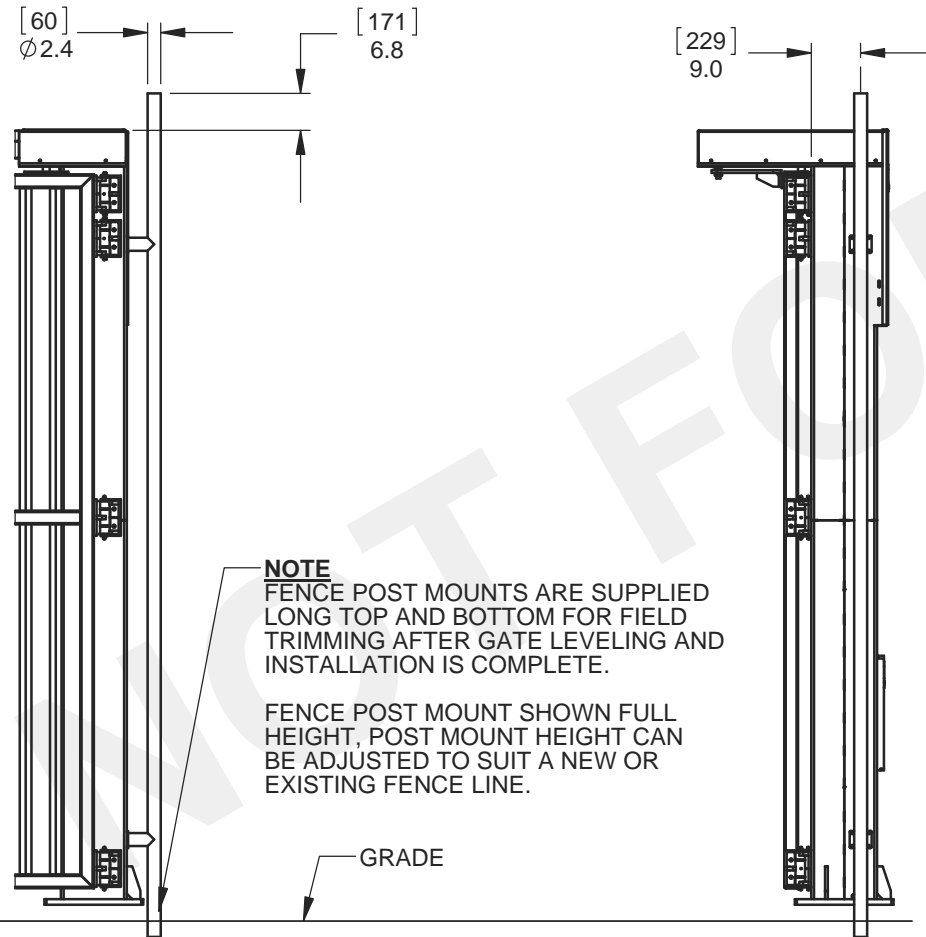
DETAIL M-2: - OPTIONAL DRIVE THRU MOUNTED TRAFFIC LIGHT



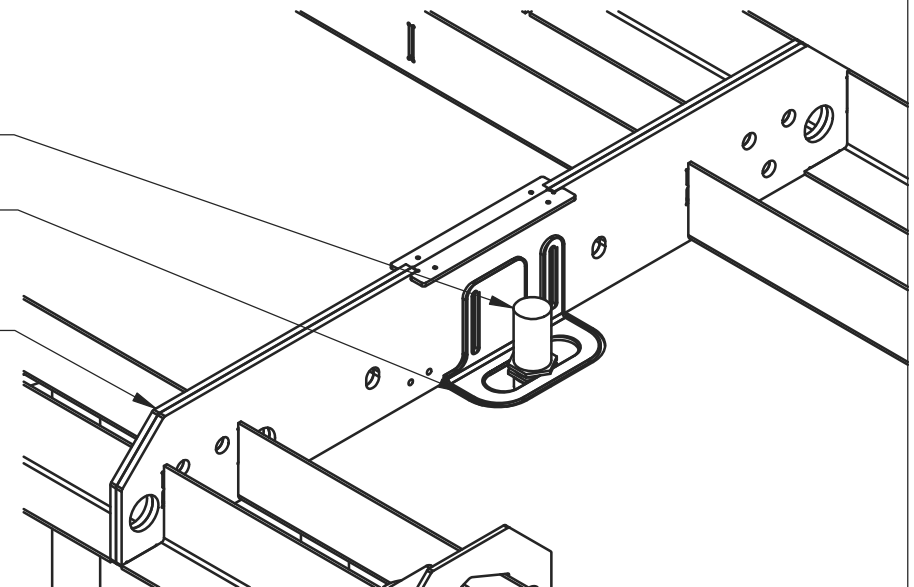
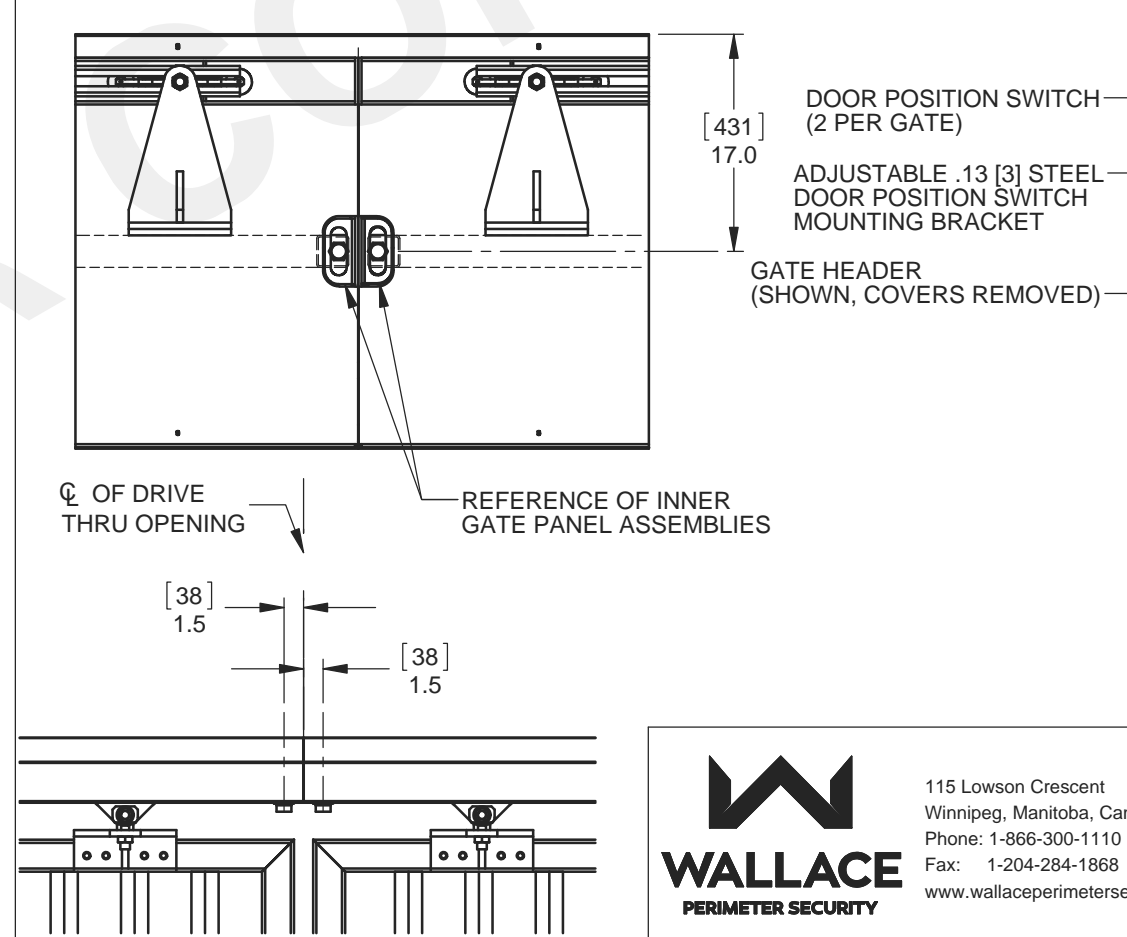
DETAIL N: - OPTIONAL STROBE LIGHT



DETAIL O: - OPTIONAL FENCE POST MOUNTS



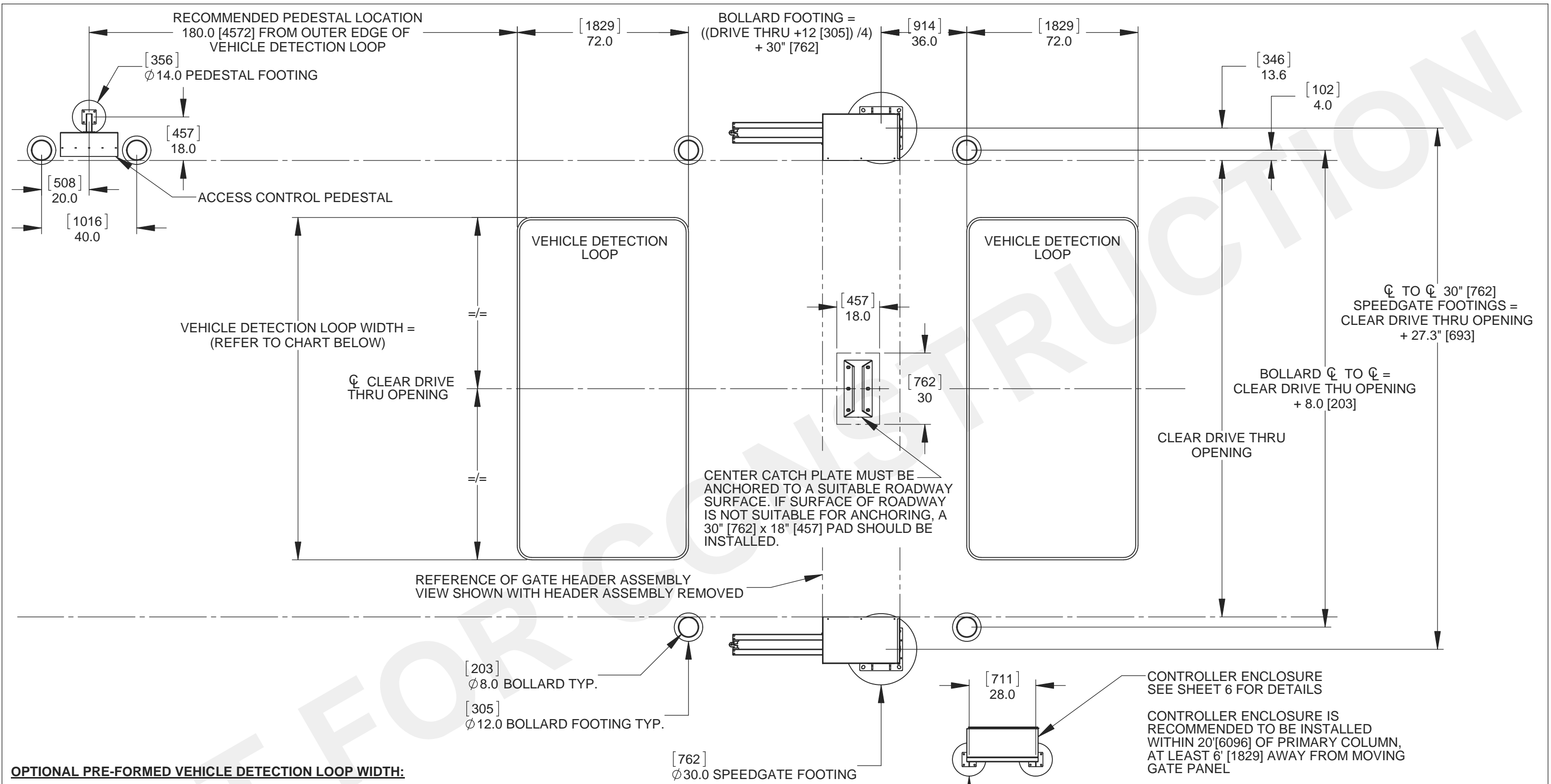
DETAIL P: - OPTIONAL DOOR POSITION SWITCH



Description:		PDTT POST DRIVE TOP TRACK SPEEDGATE STANDARD NOTES AND OPTIONS	
Customer / Project Name:		-	
Finish:		Date:	7/7/2017
Drawing No.	PDTT-07-07-17	Rev.	Sheet: 4 of 6

WALLACE
PERIMETER SECURITY

115 Lawson Crescent
Winnipeg, Manitoba, Canada, R3P 1A6
Phone: 1-866-300-1110
Fax: 1-204-284-1868
www.wallaceperimetersecurity.com

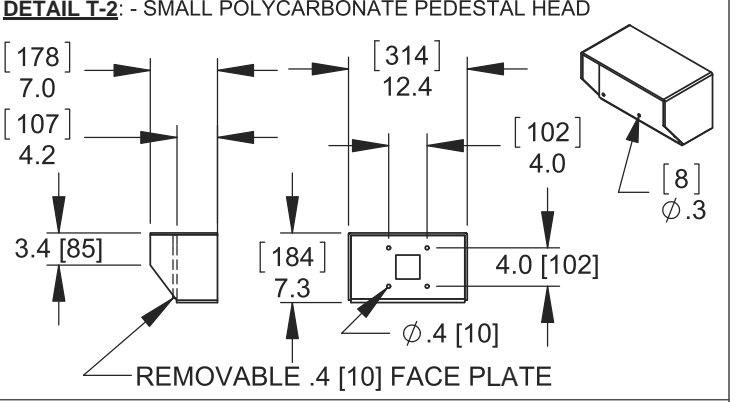
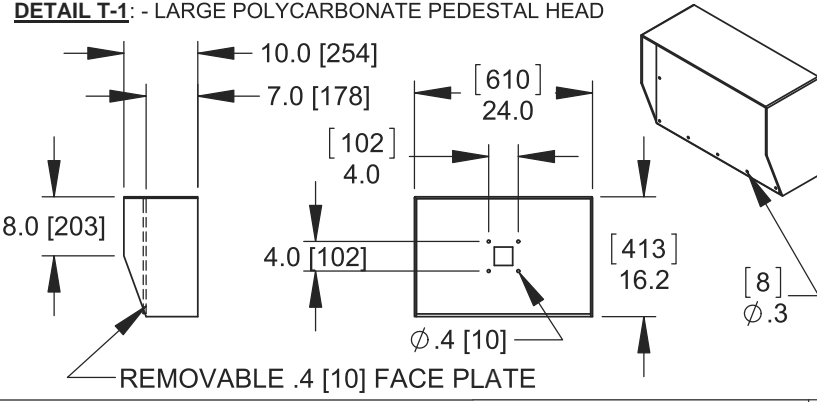
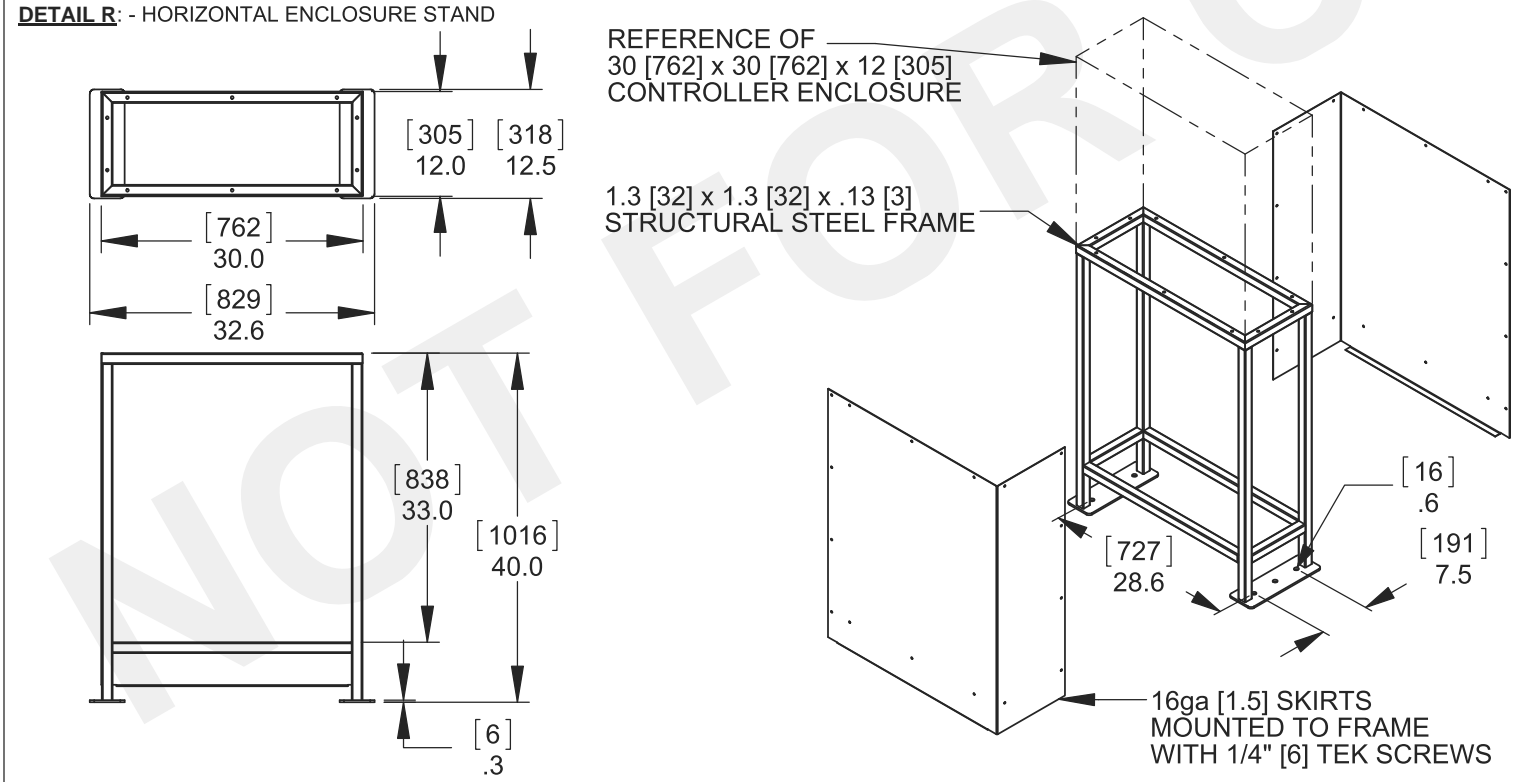
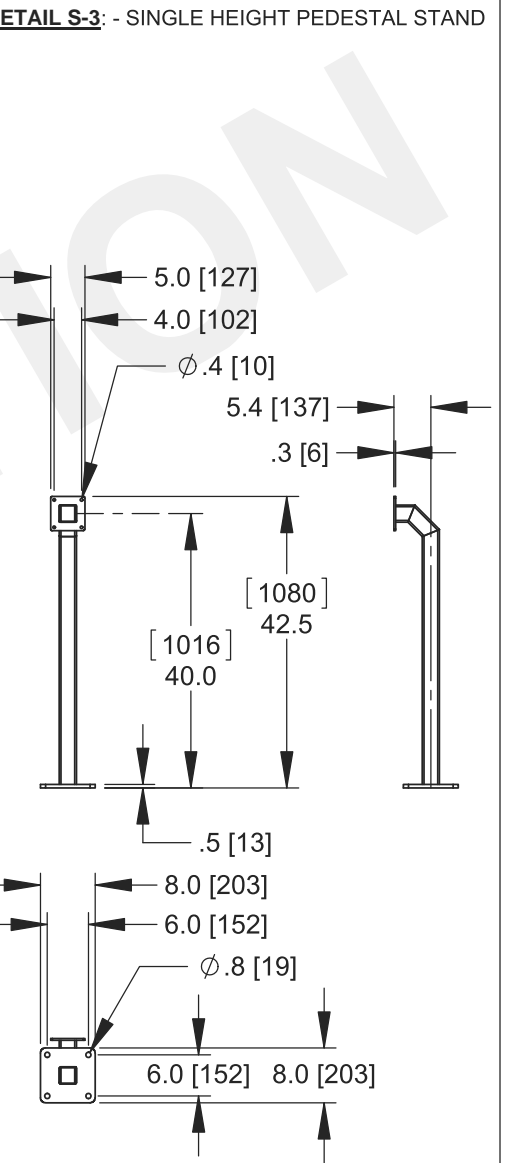
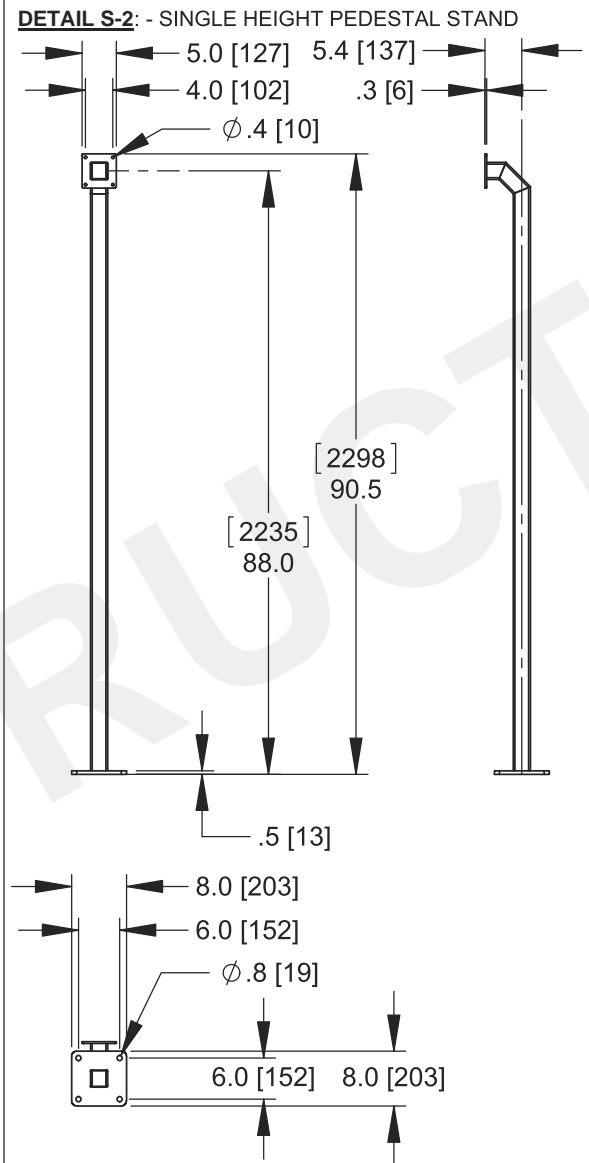
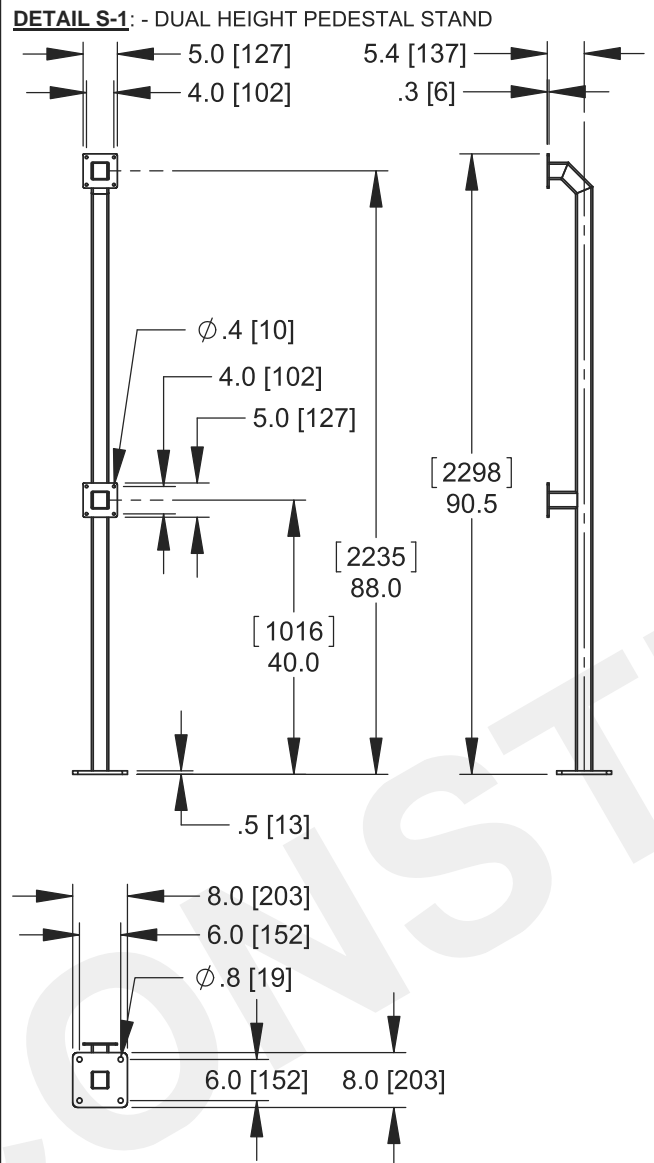
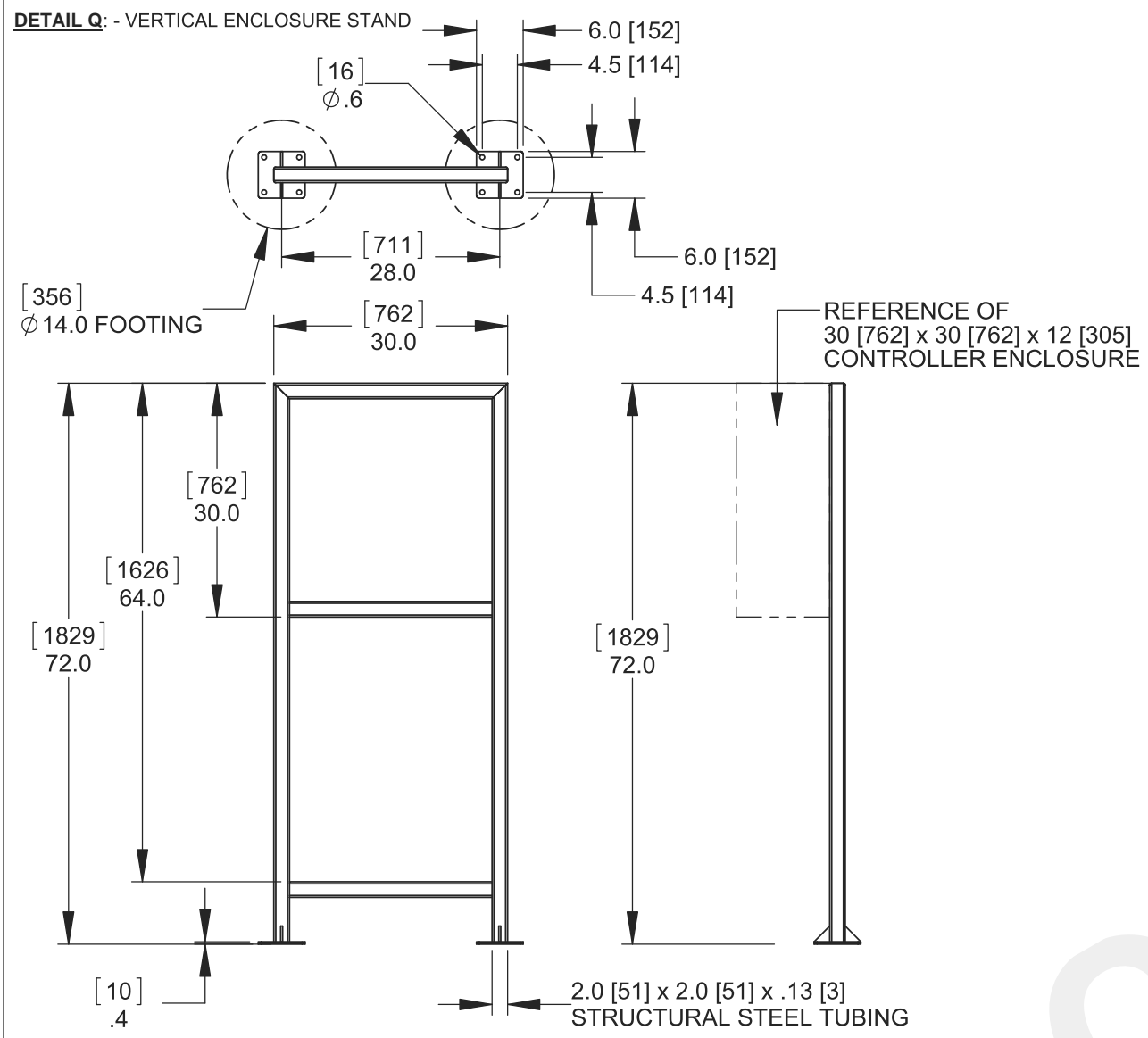


OPTIONAL PRE-FORMED VEHICLE DETECTION LOOP WIDTH:

ClearDriveThruOpening	LoopWidth
10' [3048]	96" [2438]
12' [3658]	96" [2438]
14' [4267]	120" [3048]
16' [4877]	144" [3658]
18' [5486]	168" [4267]
20' [6096]	192" [4877]
22' [6076]	192" [4877]
24' [7315]	240" [6096]

115 Lawson Crescent
 Winnipeg, Manitoba, Canada, R3P 1A6
 Phone: 1-866-300-1110
 Fax: 1-204-284-1868
 www.wallaceperimetersecurity.com

Description:		PDTT	
POST DRIVE TOP TRACK SPEEDGATE FOOTINGS / VEHICLE DETECTION LOOP LOCATIONS			
Customer / Project Name:			
Finish:		Date:	
		7/7/2017	
Drawing No.		Rev.	
PDTT-07-07-17			
		Sheet:	
		5 of 6	



WALLACE
PERIMETER SECURITY

115 Lawson Crescent
Winnipeg, Manitoba, Canada, R3P 1A6
Phone: 1-866-300-1110
Fax: 1-204-284-1868
www.wallaceperimetersecurity.com

Description:		PDTT	
CONTROLLER ENCLOSURE STANDS		PEDESTAL HEADS / PEDESTAL STANDS	
Customer / Project Name:		-	
Finish:	-	Date:	7/7/2017
Drawing No.	PDTT-07-07-17	Rev.	Sheet:
			6 of 6