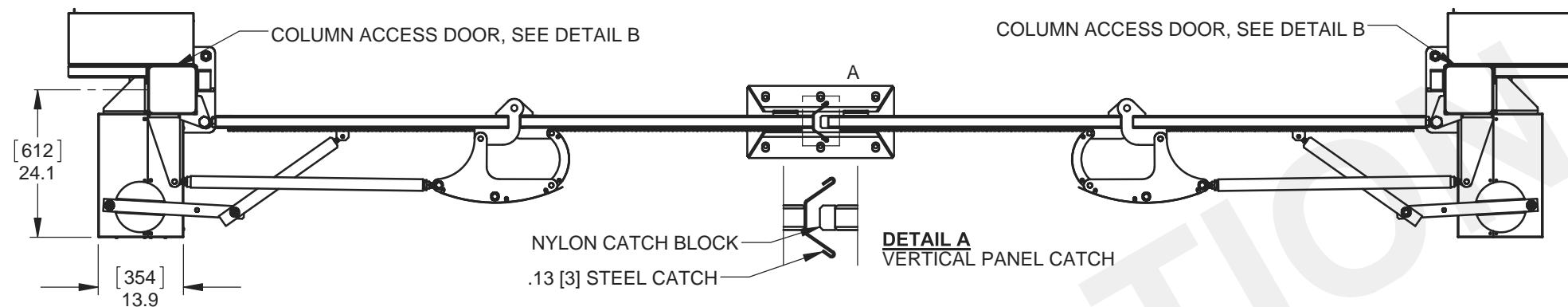
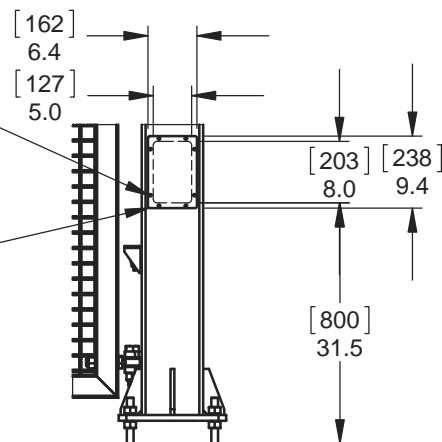


DETAIL B - COLUMN ACCESS DOOR

ACCESS DOOR IS SECURED
USING 1/4-20 TORX T27
SECURITY SCREWS

.13 [3] STEEL ACCESS DOOR

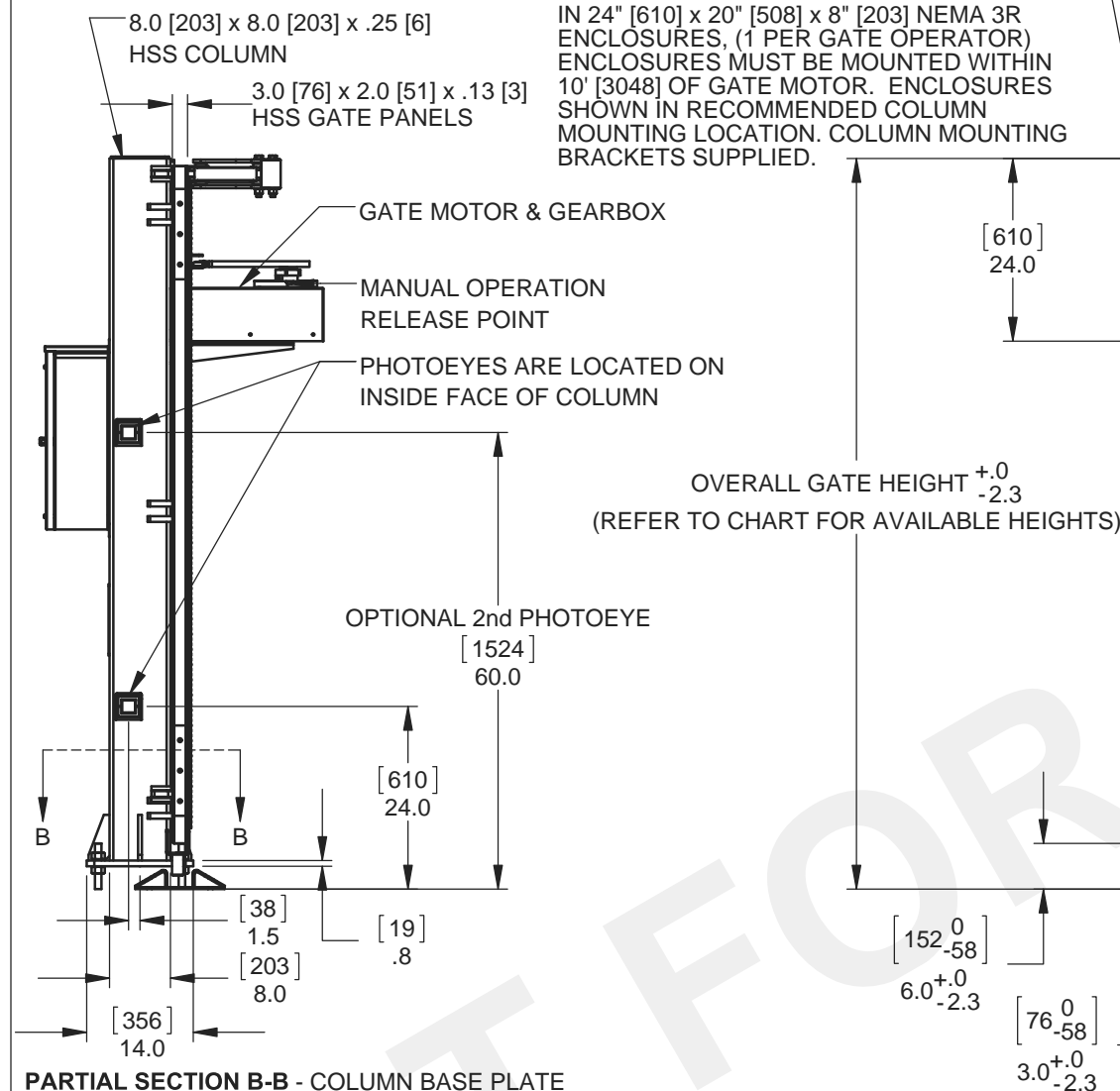


CLEAR OPENING 6' [1829] (MIN. 12' [3658] - MAX. 30' [9144])
8' [2438] (MIN. 12' [3658] - MAX. 26' [7315])
10' [3048] (MIN. 12' [3658] - MAX. 24' [7925])

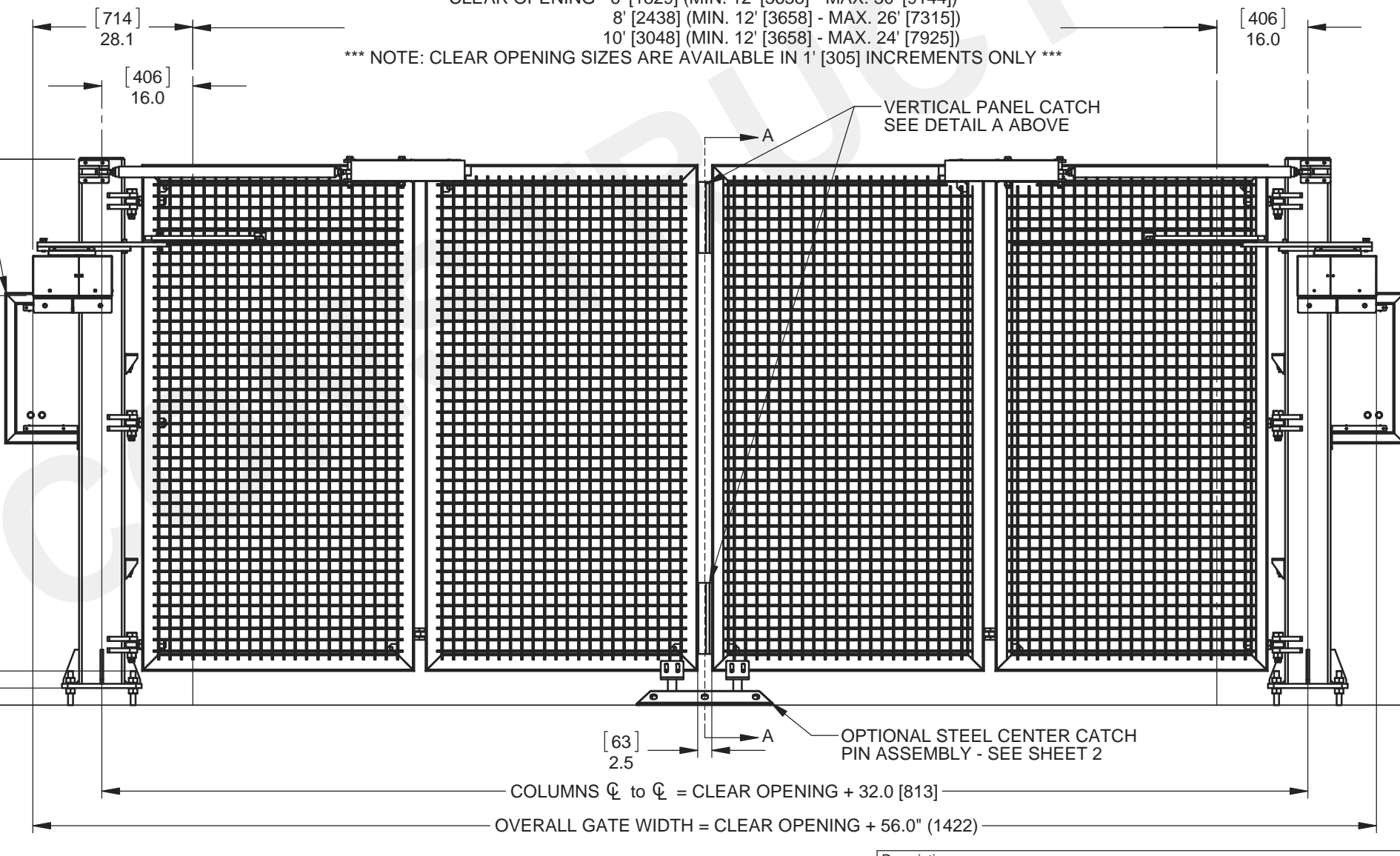
*** NOTE: CLEAR OPENING SIZES ARE AVAILABLE IN 1' [305] INCREMENTS ONLY ***

SECTION A-A

ELECTRICAL CONTROLLERS ARE MOUNTED
IN 24" [610] x 20" [508] x 8" [203] NEMA 3R
ENCLOSURES, (1 PER GATE OPERATOR)
ENCLOSURES MUST BE MOUNTED WITHIN
10' [3048] OF GATE MOTOR. ENCLOSURES
SHOWN IN RECOMMENDED COLUMN
MOUNTING LOCATION. COLUMN MOUNTING
BRACKETS SUPPLIED.



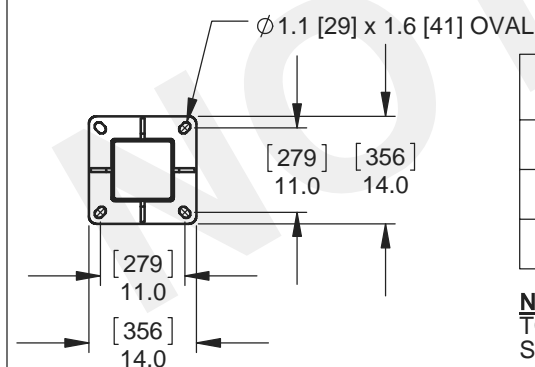
OVERALL GATE HEIGHT $+0$
 -2.3
(REFER TO CHART FOR AVAILABLE HEIGHTS)



COLUMNS C_{L} TO C_{L} = CLEAR OPENING + 32.0 [813]

OVERALL GATE WIDTH = CLEAR OPENING + 56.0" (1422)

PARTIAL SECTION B-B - COLUMN BASE PLATE



DRIVE THRU HEIGHTS

| | |
|------|-------------|
| 6ft | 72" [1829] |
| 8ft | 96" [2438] |
| 10ft | 120" [3048] |

NOTE: 10' HEIGHT HAS PANEL EXTENSIONS
TO ACHIEVE DESIRED GATE HEIGHT
SEE SHEET 4 FOR INFO.

FINISH NOTES

STANDARD FINISH:
HOT DIPPED GALVANIZED ON ALL STEEL COMPONENTS.

OPTIONAL FINISH:
POWDER COAT PAINT, CUSTOM COLORS AVAILABLE
RAL # MUST BE SPECIFIED AT TIME OF ORDER.



115 Lawson Crescent
Winnipeg, Manitoba, Canada, R3P 1A6
Phone: 1-866-300-1110
Fax: 1-204-284-1868
www.wallaceperimetersecurity.com

Description:

**FOLDSMART XT
TRACKLESS BI-FOLD GATE SYSTEM
STANDARD DIMENSIONS**

Customer / Project Name:

Finish:
SEE NOTES

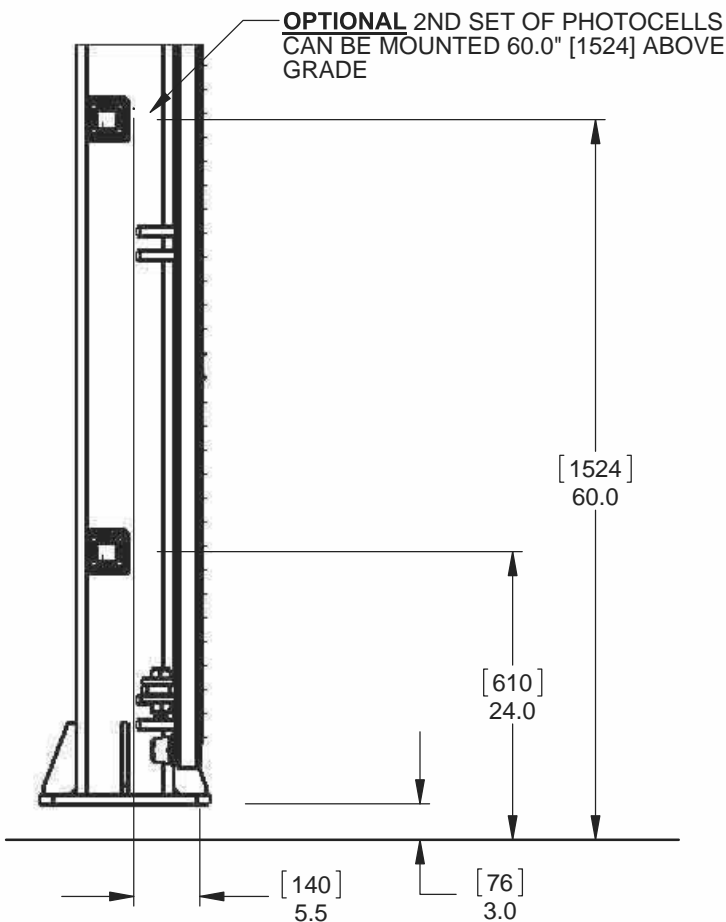
Drawing No.
FSXT-07-07-17

Rev.

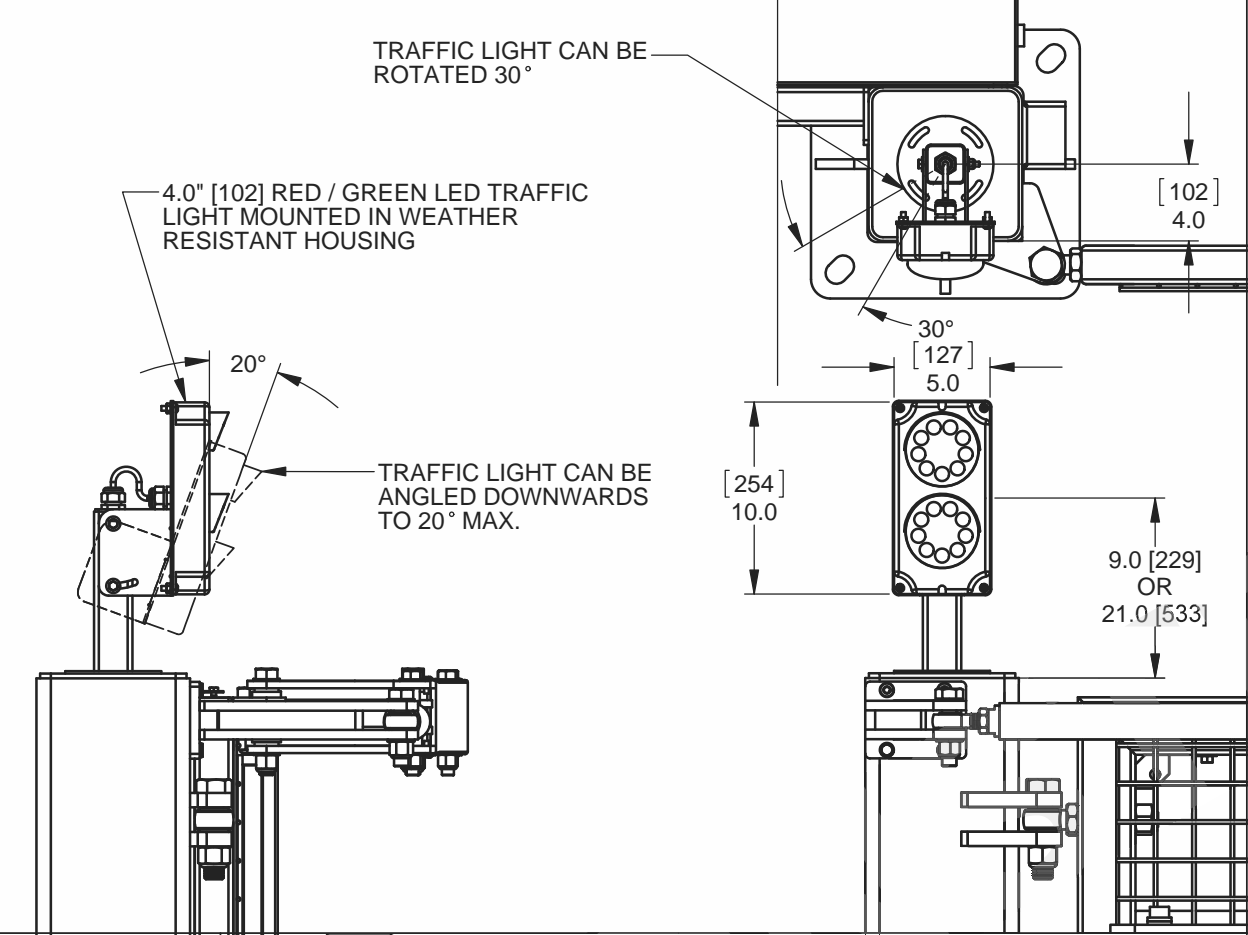
Date:
7/7/2017

Sheet:
1 of 6

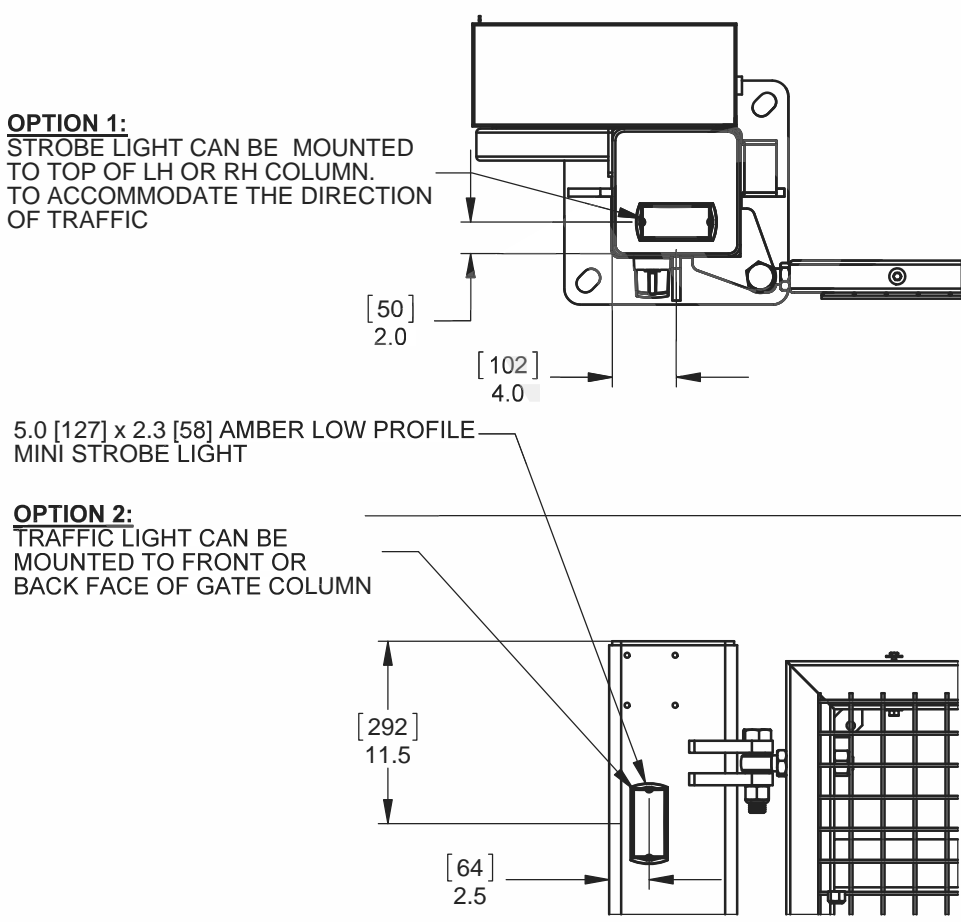
DETAIL G - PHOTOCELLS



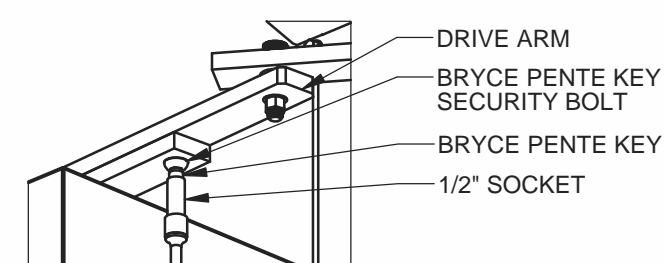
DETAIL H - 4" LED TRAFFIC LIGHT



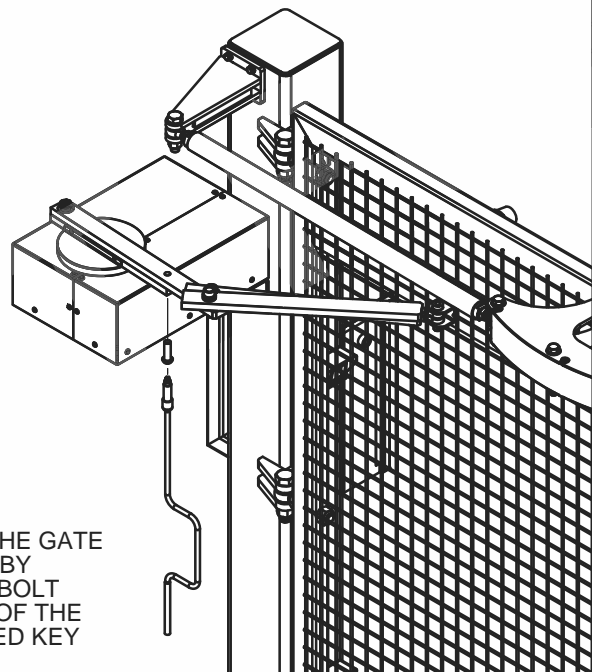
DETAIL I - FLUSH MOUNTED STROBE LIGHT



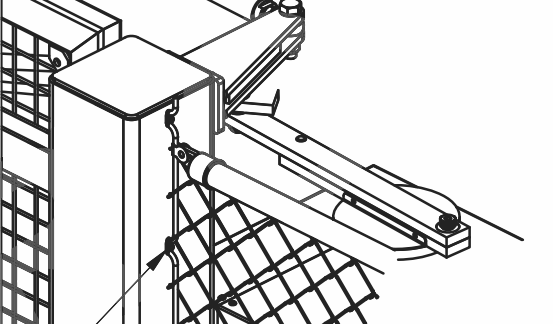
DETAIL J - MANUAL OPERATION RELEASE POINT



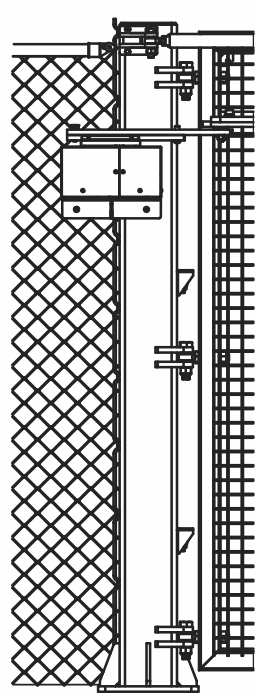
NOTE:
IN CASE OF POWER FAILURE. THE GATE CAN BE MANUALLY OPERATED BY REMOVING THE BRYCE PENTE BOLT LOCATED ON THE UNDERSIDE OF THE DRIVE ARM USING THE SUPPLIED KEY



DETAIL K - FENCE MOUNT BRACKET



NOTE:
FENCE BRACKET, RAIL CLIP AND TEK SCREWS SUPPLIED.



115 Lowson Crescent
Winnipeg, Manitoba, Canada, R3P 1A6
Phone: 1-866-300-1110
Fax: 1-204-284-1868
www.wallaceperimetersecurity.com

Description:
**FOLDSMART XT
TRACKLESS BI-FOLD GATE SYSTEM
GENERAL NOTES AND OPTIONS**

Customer / Project Name:

Finish:
SEE NOTES

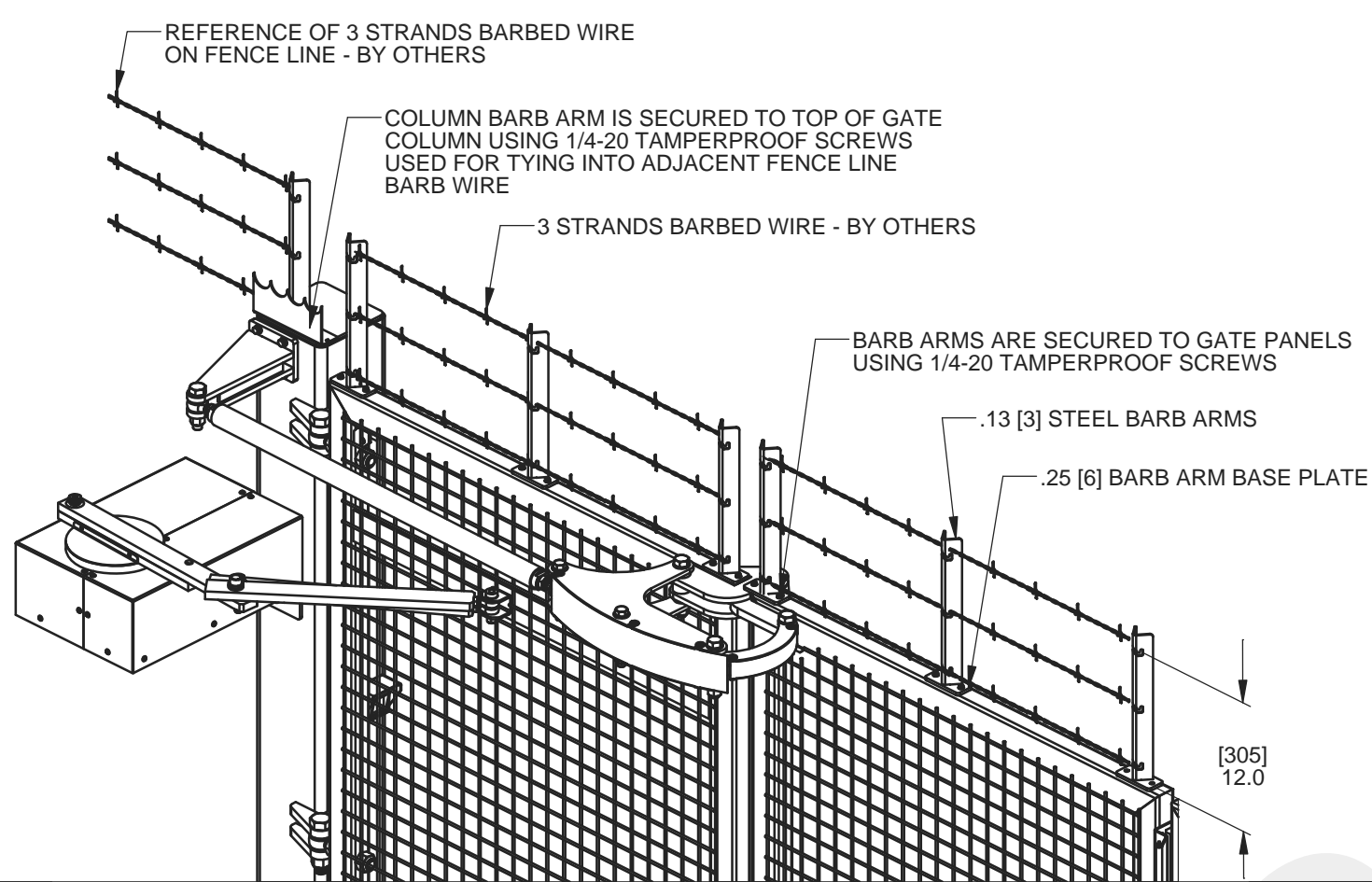
Drawing No.
FSXT-07-07-17

Rev.

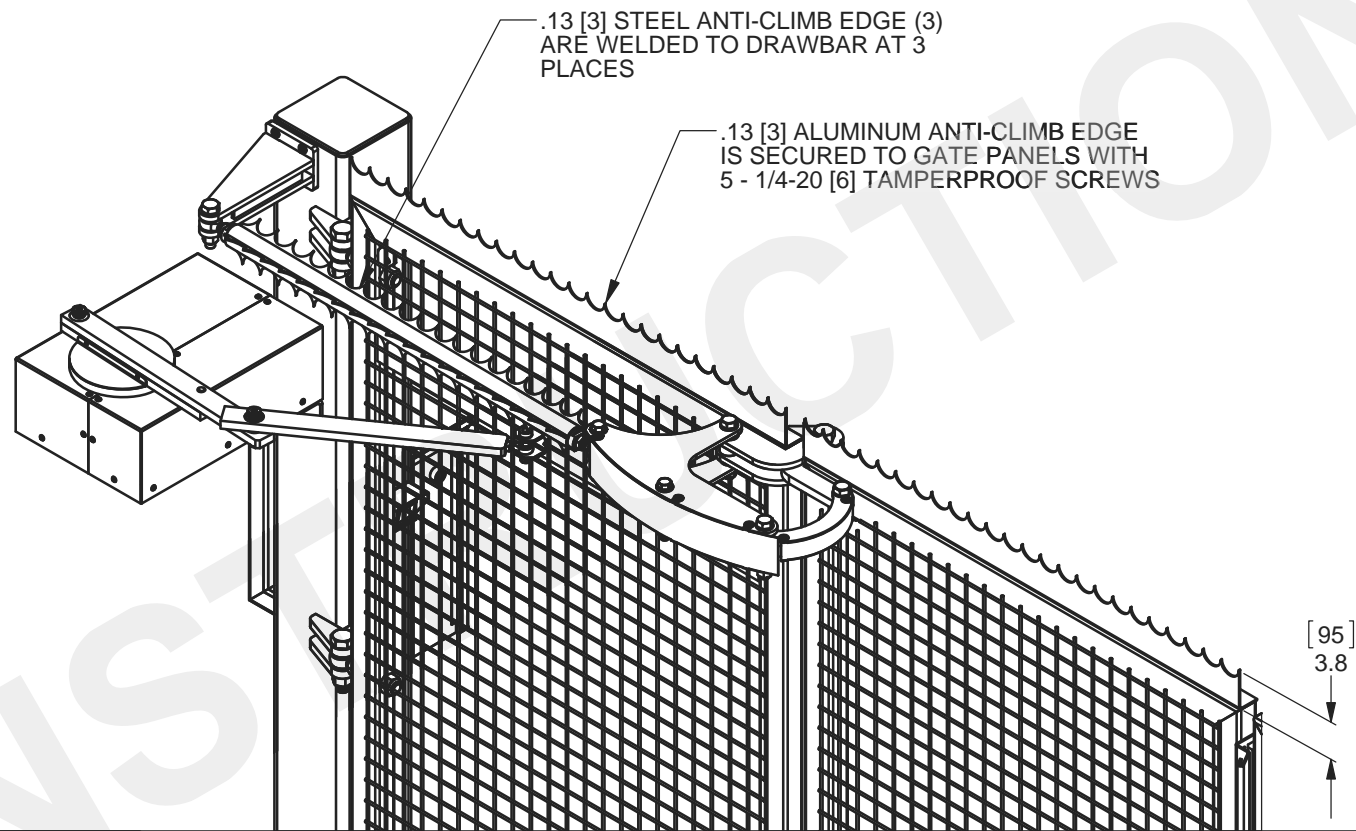
Date:
7/7/2017

Sheet:
3 of 6

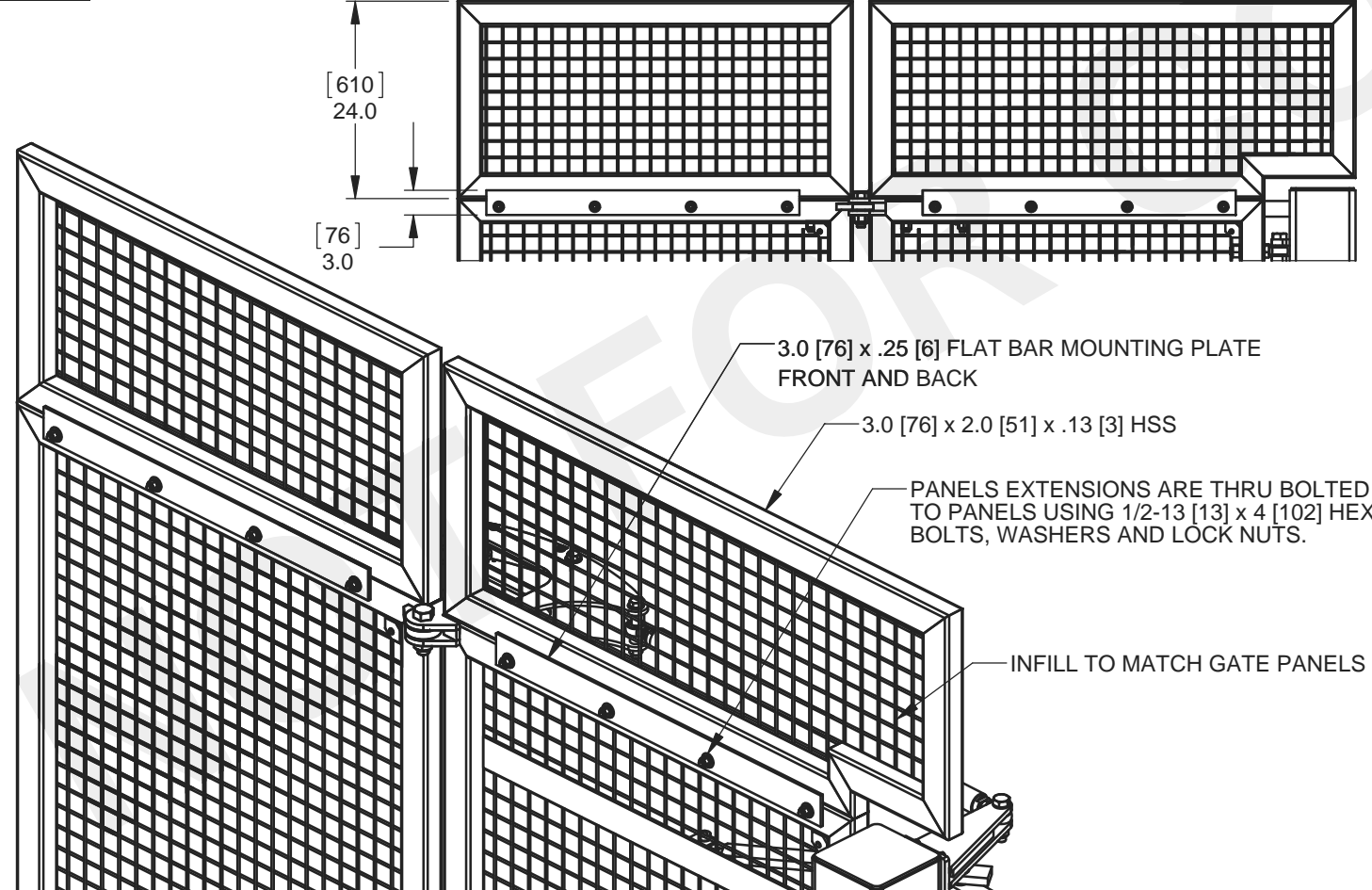
DETAIL L - BARB ARM ANTI-CLIMB



DETAIL M - ANTI-CLIMB EDGE

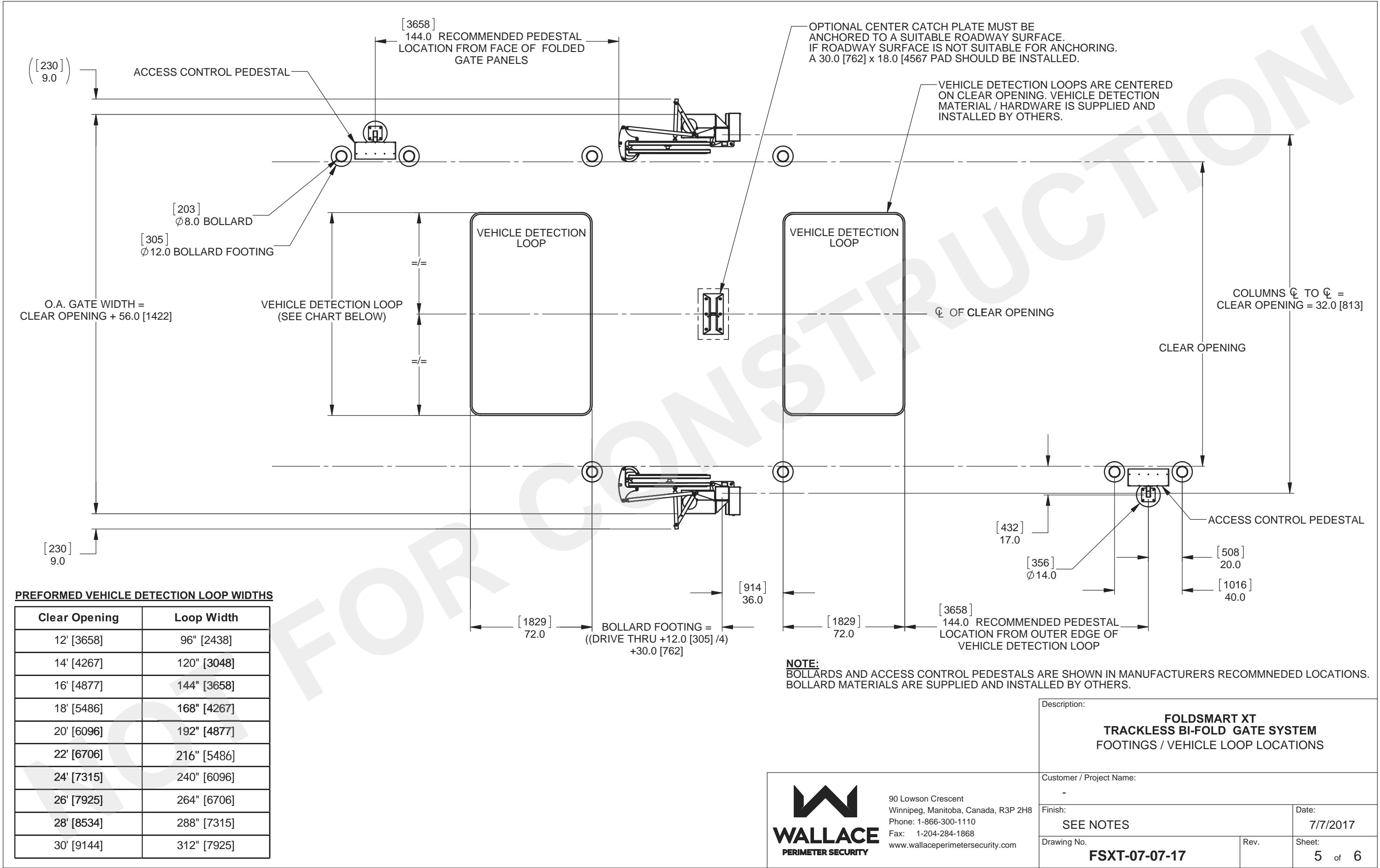


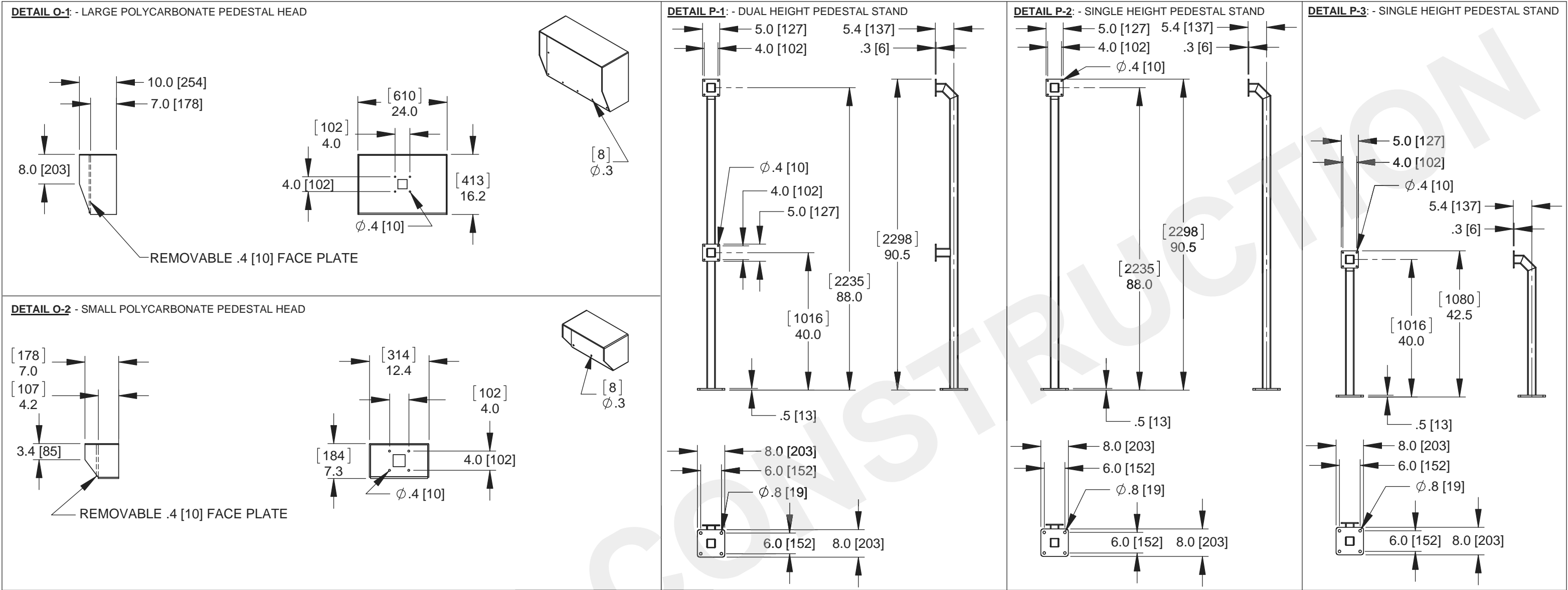
DETAIL N - PANEL EXTENSIONS



115 Lawson Crescent
Winnipeg, Manitoba, Canada, R3P 1A6
Phone: 1-866-300-1110
Fax: 1-204-284-1868
www.wallaceperimetersecurity.com

| | | | |
|---|--|------|--------------------------|
| Description: FOLDSMART XT TRACKLESS BI-FOLD GATE SYSTEM GENERAL NOTES AND OPTIONS | | | |
| Customer / Project Name: - | | | |
| Finish: SEE NOTES | | Rev. | Date: 7/7/2017 |
| Drawing No. FSXT-07-07-17 | | | Sheet: 4 of 6 |





90 Lowson Crescent
Winnipeg, Manitoba, Canada, R3P 2H8
Phone: 1-866-300-1110
Fax: 1-204-284-1868
www.wallaceperimetersecurity.com

| | | | |
|--|------|-------------------|--|
| Description: FOLDSMART XT TRACKLESS BI-FOLD GATE SYSTEM ACCESS CONTROL PEDESTALS | | | |
| Customer / Project Name: - | | | |
| Finish: SEE NOTES | | Date: 7/7/2017 | |
| Drawing No. FSXT-07-07-17 | Rev. | Sheet: 6 of 6 | |