

Product must be installed in accordance with ASTM: F-2200 & UL325

- NOTES:**
- STANDARD FINISH - HOT DIPPED GALVANIZED FINISH ON ALL STEEL COMPONENTS. ALUMINUM COMPONENTS MILL FINISH.
 - SEE SHEETS 2 AND 3 FOR GENERIC SITE LAYOUT AND INSTALLATION NOTES
 - SEE SHEET 4 FOR STANDARD PART DETAILS AND OPTIONAL COMPONENTS
 - SEE SHEETS 2 & 5 FOR CONDUIT LOCATIONS AND REQUIREMENTS

NOTE: DIMENSIONS ARE SHOWN IN INCHES. DIMENSIONS SHOWN IN BRACKETS [] ARE IN MILLIMETERS

Alpha Model	H	A	B	C	D	U max
16 / 6	72.0 [1829]	199.6 [5069]	100.2 [2546]	199.6 [5069]	192.0 [4876]	507.0 [12879]
16 / 8	96.0 [2438]					
20 / 6	72.0 [1829]	247.6 [6288]	87.7 [2227]	247.6 [6288]	240.0 [6095]	590.5 [14998]
20 / 8	96.0 [2438]					
24 / 6	72.0 [1829]	295.8 [7513]	110.3 [2802]	295.8 [7513]	288.0 [7320]	709.6 [18023]
24 / 8	96.0 [2438]					
30 / 6	72.0 [1829]	367.7 [9340]	121.0 [3075]	367.7 [9340]	360.0 [9147]	864.2 [21950]
30 / 8	96.0 [2438]					
40 / 6	72.0 [1829]	491.7 [12489]	146.7 [3726]	491.7 [12489]	484.0 [12296]	1137.8 [28899]
40 / 8	96.0 [2438]					



90 Lowson Crescent
Winnipeg, Manitoba, Canada, R3P 2H8
Phone: 1-866-300-1110
Fax: 1-204-284-1868
www.wallaceperimetersecurity.com

Description: ALPHA GATE STANDARD DIMENSIONS	
Customer / Project Name: -	
Finish: SEE NOTES	Date: 7/7/2017
Drawing No. ALPHA-07-07-17	Rev. Sheet: 1 of 5

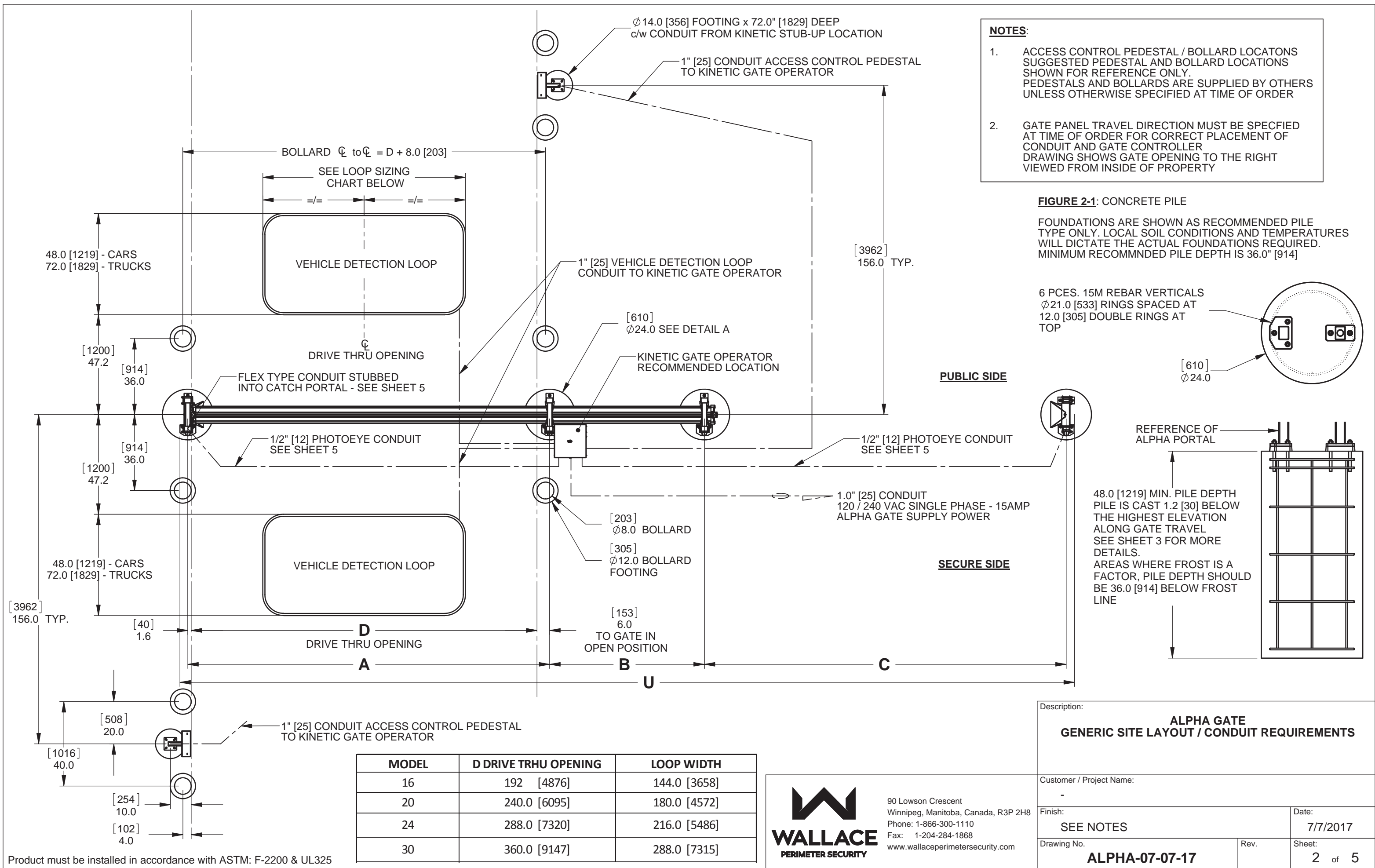


FIGURE 3-1

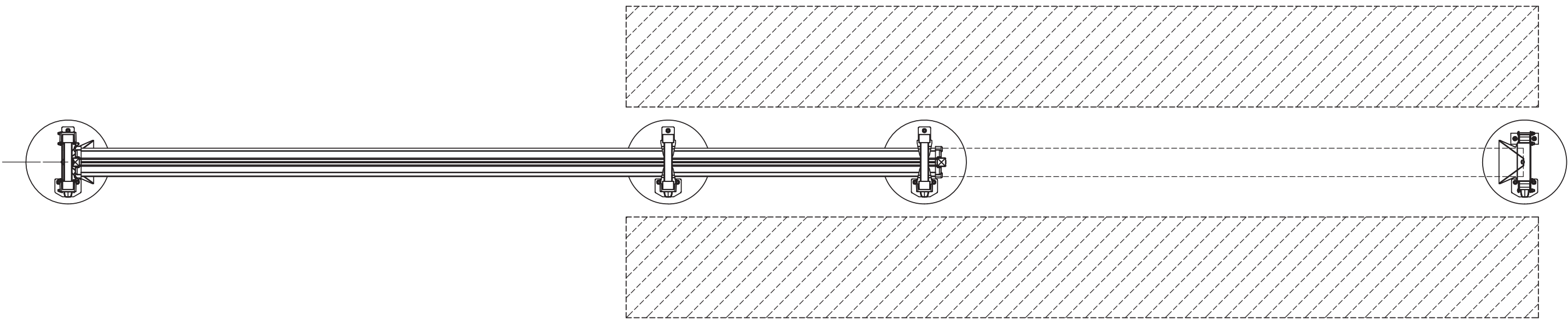


FIGURE 3-2

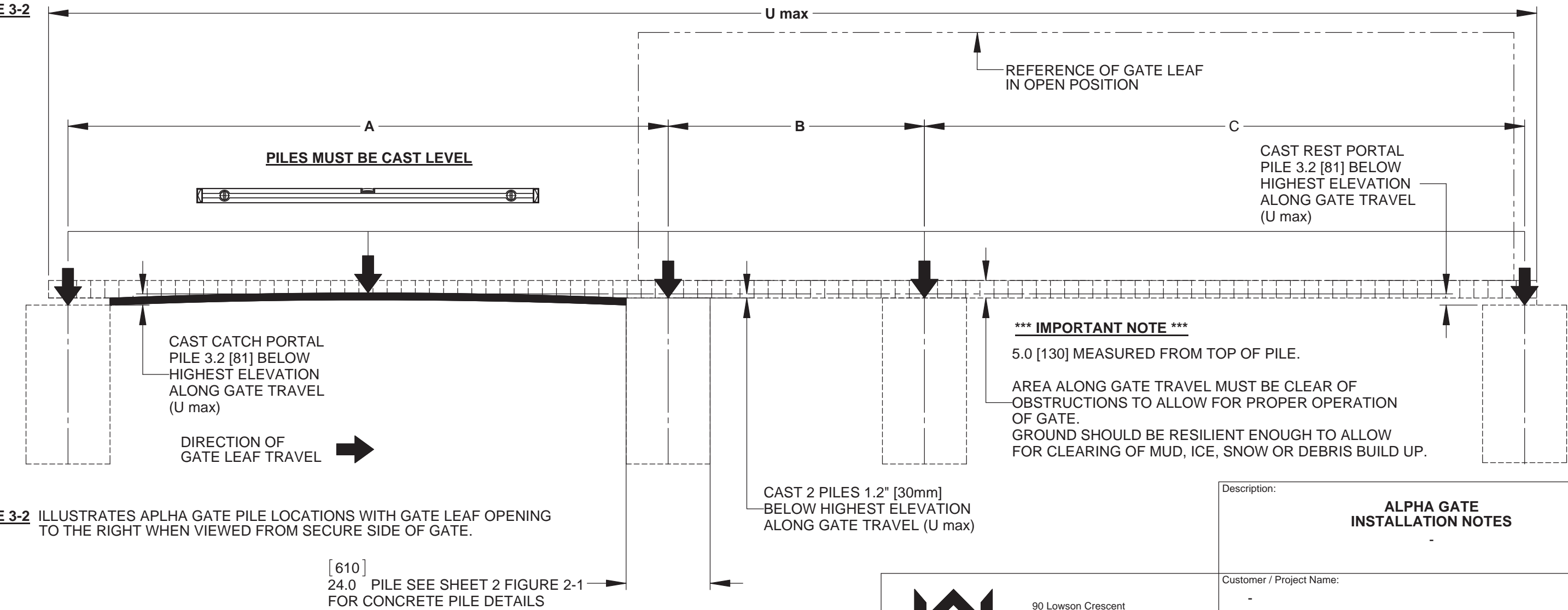


FIGURE 3-2 ILLUSTRATES ALPHA GATE PILE LOCATIONS WITH GATE LEAF OPENING TO THE RIGHT WHEN VIEWED FROM SECURE SIDE OF GATE.

[610]
24.0 PILE SEE SHEET 2 FIGURE 2-1
FOR CONCRETE PILE DETAILS

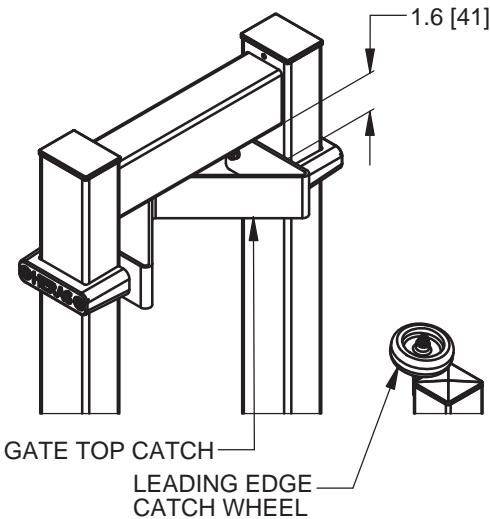


90 Lawson Crescent
Winnipeg, Manitoba, Canada, R3P 2H8
Phone: 1-866-300-1110
Fax: 1-204-284-1868
www.wallaceperimetersecurity.com

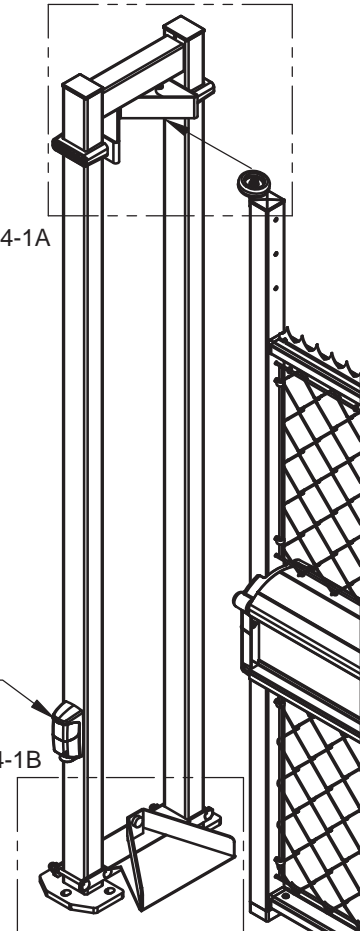
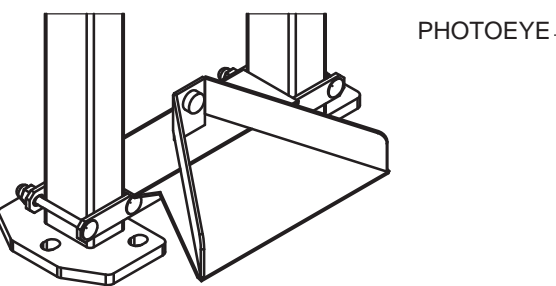
Description: ALPHA GATE INSTALLATION NOTES			
Customer / Project Name: -			
Finish: SEE NOTES		Date: 7/7/2017	
Drawing No. ALPHA-07-07-17	Rev.	Sheet: 3 of 5	

DETAIL 4-1 - CATCH PORTAL DETAILS

DETAIL 4-1A - LEADING EDGE CATCH WHEEL

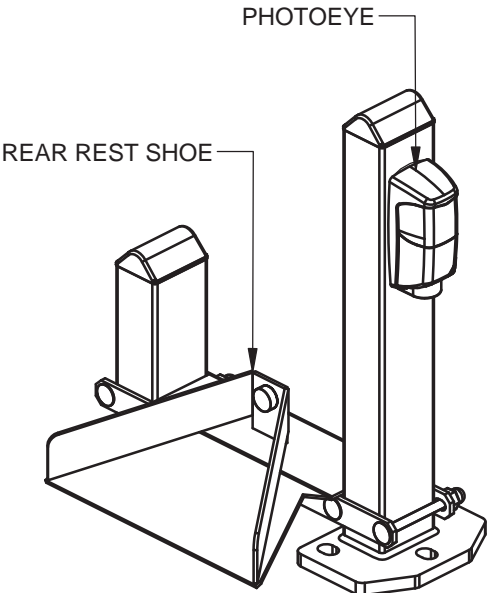


DETAIL 4-1B - GATE CATCH SHOE / RUN ON PLATE

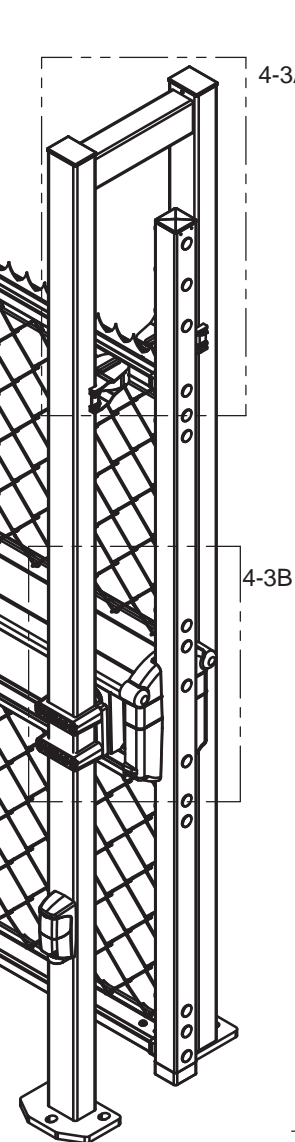


DETAIL 4-2 - REAR REST SHOE

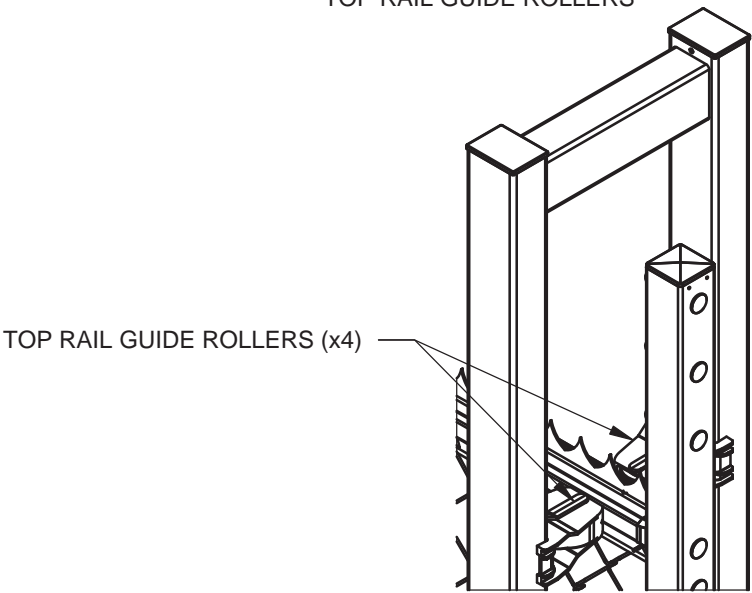
REAR REST SHOE WILL SUPPORT GATE PANEL IF THE GATE IS TO BE LEFT IN THE OPEN POSITION FOR EXTENDED PERIODS OF TIME.



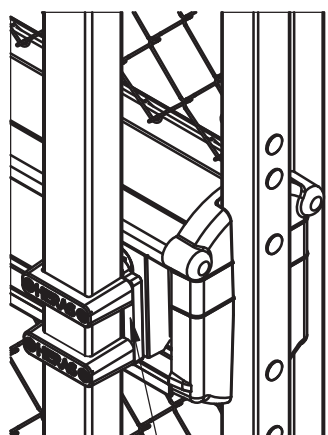
DETAIL 4-3 - ROLLERS



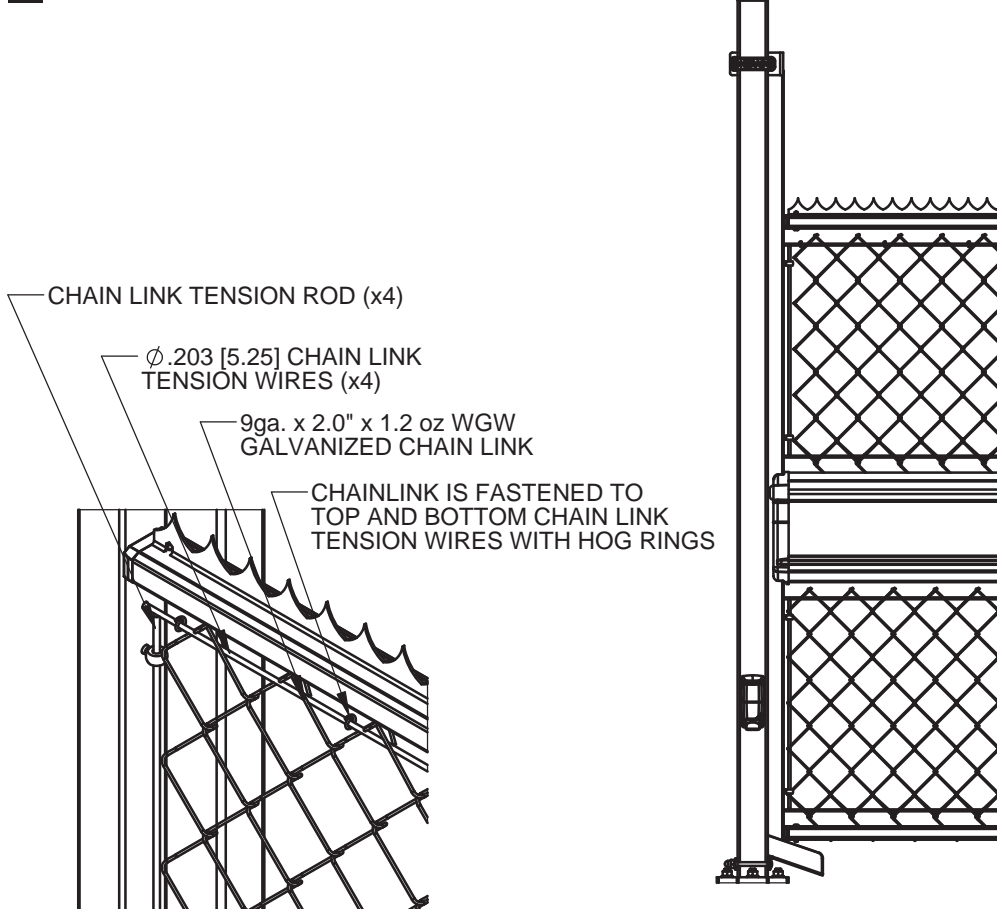
DETAIL 4-3A TOP RAIL GUIDE ROLLERS



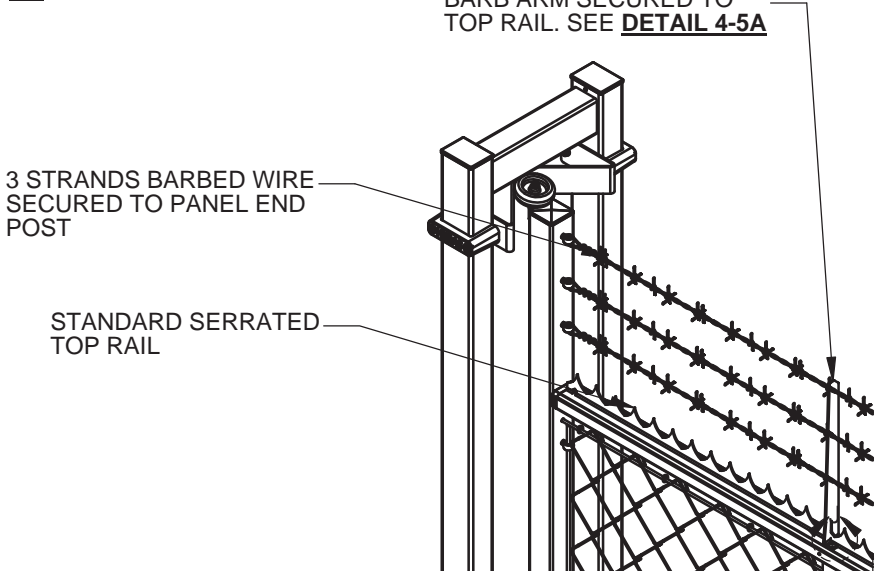
DETAIL 4-3B ROLLER SET



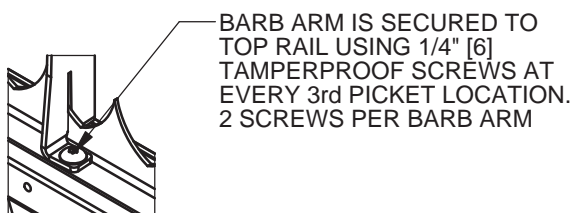
4-4 - STANDARD GALVANIZED CHAIN LINK INFILL



4-5 - BARB WIRE ANTI-CLIMB



DETAIL 4-5A - BARB ARM MOUNTING



DETAIL 4-3C CANTILEVER ROLLER HEIGHTS

6 FT. - 39.0 [991]
8 FT. - 50.8 [1291]

Description: ALPHA GATE STANDARD / OPTIONAL COMPONENTS			
Customer / Project Name: -			
Finish: SEE NOTES		Date: 7/7/2017	
Drawing No. ALPHA-07-07-17		Rev.	Sheet: 4 of 5



90 Lawson Crescent
Winnipeg, Manitoba, Canada, R3P 2H8
Phone: 1-866-300-1110
Fax: 1-204-284-1868
www.wallaceperimetersecurity.com

