



FIRESTAR® 700

INNOVATIVE SOLUTIONS
TO SAFETY AND FIRE
PROTECTION



WAYNE DALTON COMMERCIAL DOORS

FireStar® 700

THE INDUSTRY'S MOST INNOVATIVE FIRE DOOR

Wayne Dalton FireStar® Rolling Steel Fire Doors provide a practical and innovative solution to safety and fire protection.

FireStar® doors can be drop-tested and reset at any time by personnel, such as a facility manager or maintenance supervisor, thanks to a standard floor resettable feature.

The FireStar® door features a forward-thinking design that outperforms industry standard fire doors in all areas, including easy testing capability; smooth, quiet operation; and reliable, long-lasting performance.

- STANDARD SIZES UP TO 24' WIDE AND 24' HIGH
- LARGER SIZE OPTIONS AVAILABLE
- EASY TO TEST
- NON-TENSION RELEASE
- FLOOR RESETTABLE
- QUIET OPERATION
- UL/ULC/FM RATED
- CONFORMS TO NFPA STANDARD 80



Rolling Steel Fire Doors

Standard Features Overview

Construction

Standard Max Height* 24' (7315.2 mm)

Standard Max Width* 24' (7315.2 mm)

Material Galvanized or Stainless Steel

Curtain Interlocking roll-formed slats with alternate slats fitted with metal endlocks/windlocks

Bottom Bar Two equal angles, 0.121" min thickness, to stiffen curtain

Brackets Enclose ends of coil and provide support for counterbalance pipe at each end. Fabricate of steel plates with permanently sealed ball bearings.

Counter Balance Curtain to be correctly balanced by helical springs, oil tempered torsion type. Cast iron barrel plugs will be used to anchor springs to tension shaft and pipe. 20,000 cycle

Hood 24 gauge galvanized or stainless steel hood fabricated of sheet metal, flanged at top for attachment to header and flanged at bottom to provide longitudinal stiffness.

Finish Rust inhibitive primer on non-galvanized surfaces and operating mechanisms. Guides and brackets will be coated with a flat black prime paint

Operation

Operator Options Chain Hoist with gear drive reduction, wall crank box, motor operation, motor operation with electrical sensing edge, motor operation with pneumatic sensing edge

Release Mechanism FireStar release mechanism standard on doors up to 24'x24'

Installation

Mounting Steel, masonry, fire rated wood, fire rated drywall 16+ gauge steel jambs

Applications Factories, warehouses, mills, distribution centers and parking garages

*Larger size options available up to 36'w x 28'h with mechanical release

Options

- Chain Hoist w/ gear drive reduction
- FM label option to include hood with steel baffle
- Wind load options available
- Awning crank
- Motor operation
- Motor operation w/electrical sensing edge
- Motor operation w/ pneumatic sensing edge
- Viscous governor, if required by size of door

FireStar® Rolling Steel Fire doors are a simple and innovative solution for your safety and fire protection needs.

Critical elements necessary in the reliable function of fire doors are incorporated as standard features with FireStar's revolutionary design.

The FireStar® door can be drop tested easily and reset in a matter of seconds at any time; no tools or service technicians are required.

FireStar's revolutionary design uses a patent-pending planetary gear on the drop-out mechanism ensuring years of reliable service and drop-out performance.

The drop-out mechanism is designed to eliminate down time during drop testing while the viscous governor technology results in smoother, quieter door operation.

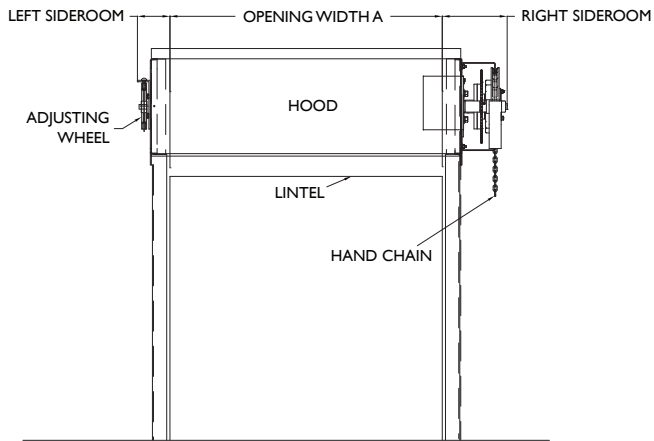
Factory tested and approved for a minimum of 20,000 cycles, the FireStar® door can be used and tested on a regular basis without concerns of premature failure.

FireStar® fire doors have been tested and approved to meet the requirements of well known agencies, such as Underwriters Laboratories of Canada and Factory Mutual, and conform to NFPA Standard 80.

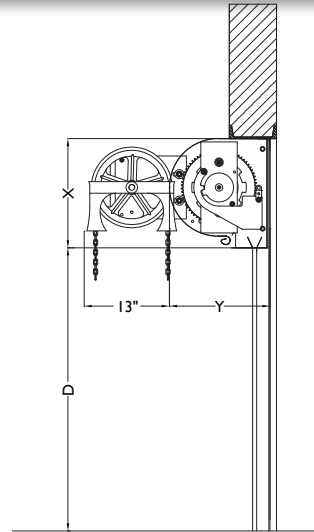
Wayne Dalton incorporates one standardized component design for all FireStar®** doors regardless of size, and utilizes fewer parts than other models. This helps to ensure more accurate installations and reduces the possibility of potential service calls in the future.

**Doors up to 24'x24'

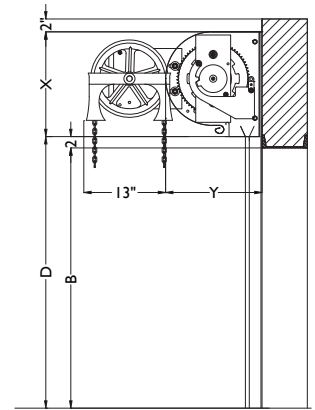
CHAIN HOIST OPERATION



FRONT ELEVATION

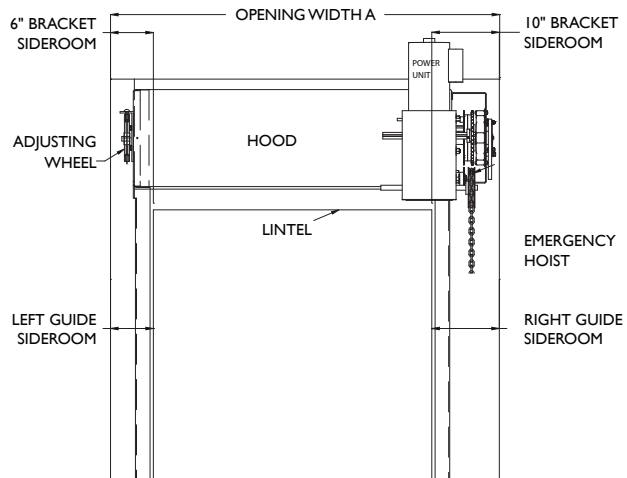


SIDE ELEVATION (UNDER LINTEL)

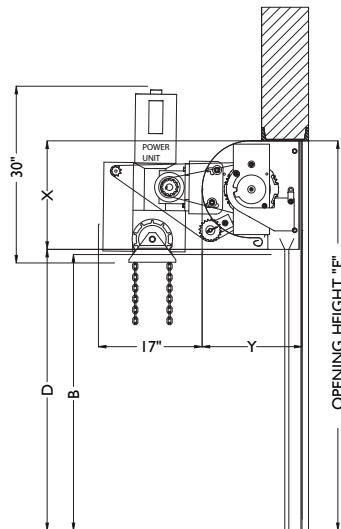


SIDE ELEVATION

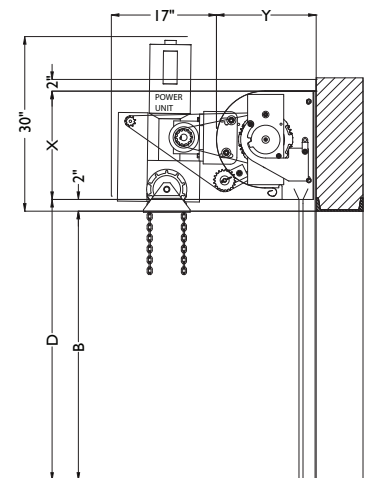
MOTOR OPERATION



FRONT ELEVATION



SIDE ELEVATION (UNDER LINTEL)



SIDE ELEVATION

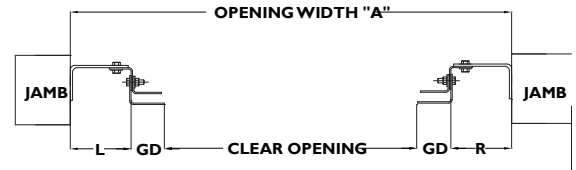
ANGLE GUIDES - FACE MOUNTED TO MASONRY



ANGLE GUIDES - FACE MOUNTED TO STEEL



ANGLE GUIDES - MOUNTED BETWEEN JAMBS

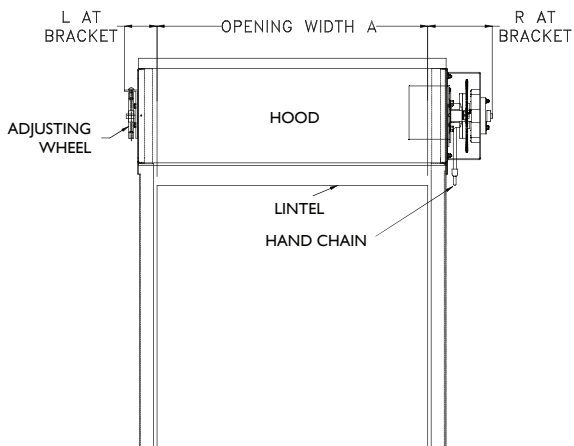


700 Series Door	
GD	WIDTH
2-7/8"	TO 13'6" WIDTH
2-13/16"	TO 20'0" WIDTH
3-1/4"	TO 24'0" WIDTH

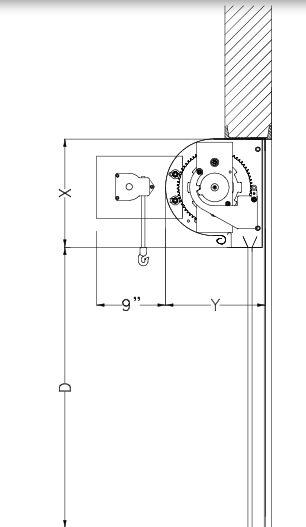
NOTE: Dimensions are for general reference only and not for construction purposes.

FIRESTAR® 700

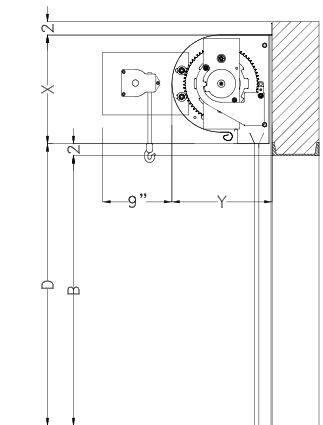
CRANK OPERATION



FRONT ELEVATION

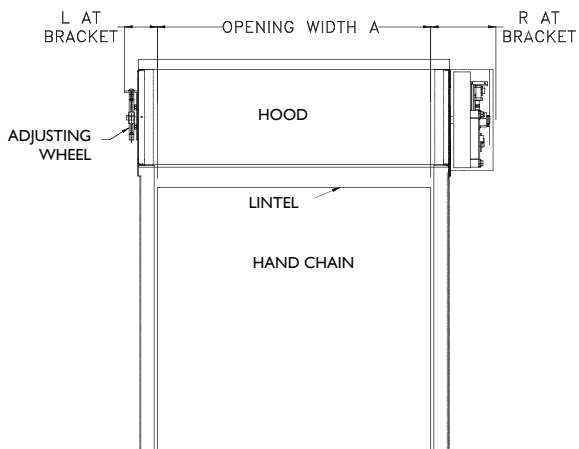


SIDE ELEVATION (UNDER LINTEL)

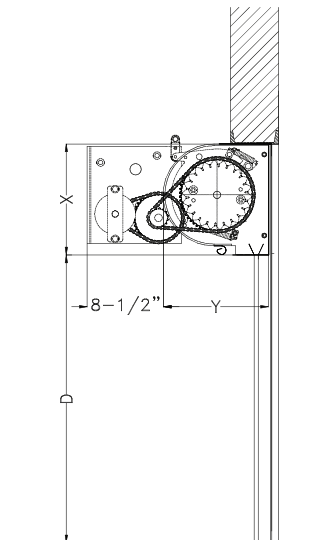


SIDE ELEVATION

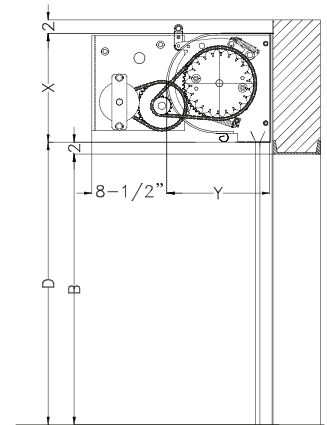
LIFT UP OPERATION - BOTTOM MOUNT



FRONT ELEVATION

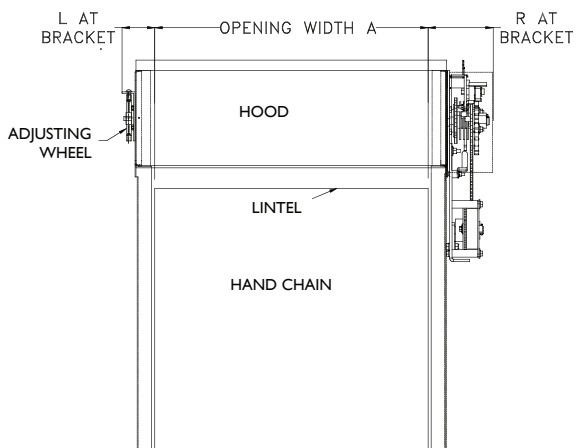


SIDE ELEVATION (UNDER LINTEL)

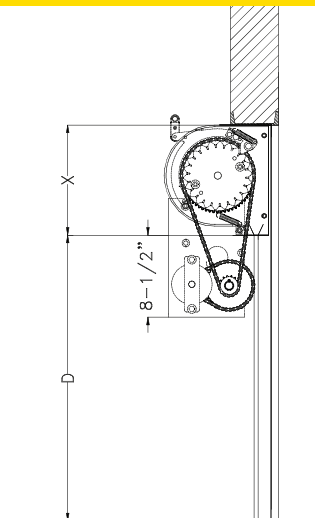


SIDE ELEVATION

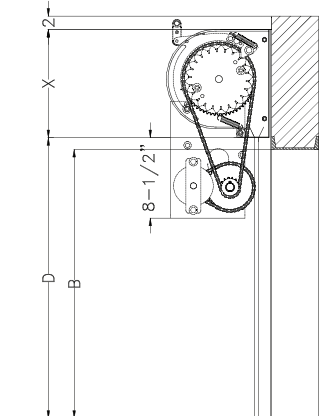
LIFT UP OPERATION - FRONT MOUNT



FRONT ELEVATION

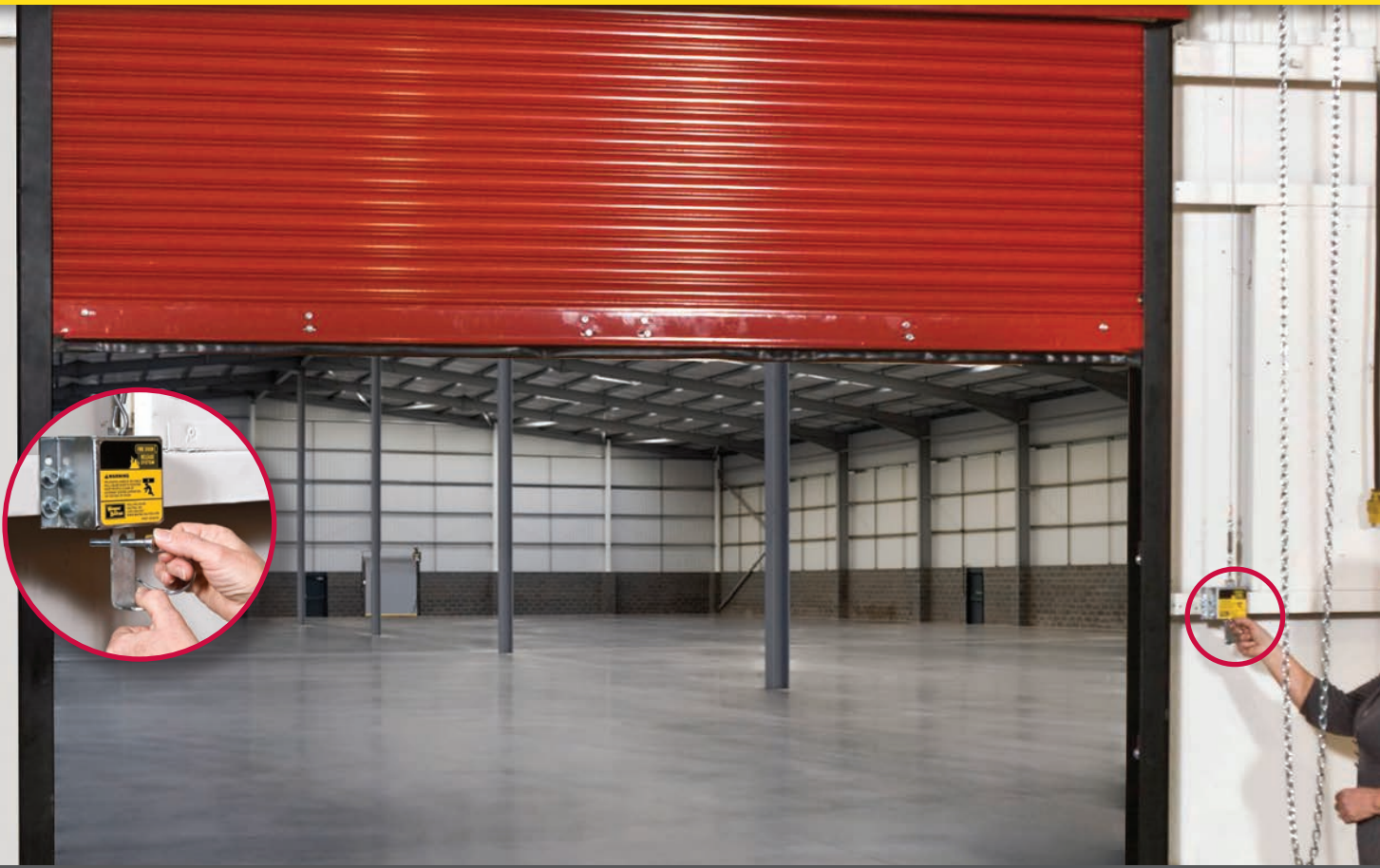


SIDE ELEVATION (UNDER LINTEL)



SIDE ELEVATION

FIRESTAR® 700

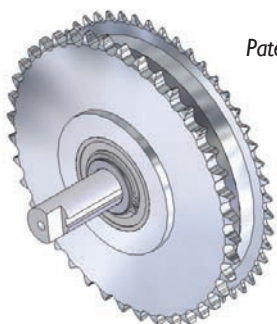


Test Device — FireStar® doors feature an easy-to-use release handle.

FireStar® Door Control Devices

Chain hoist and motor operation

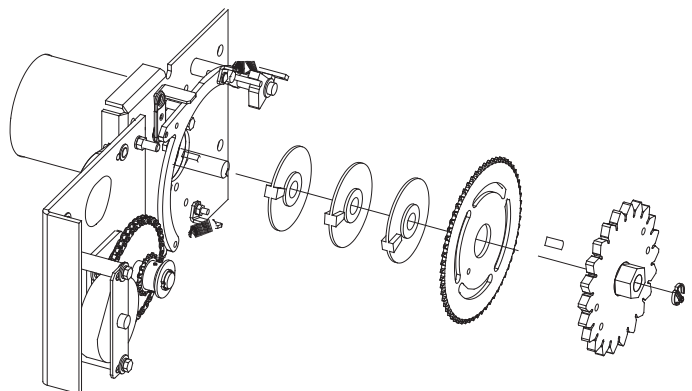
- Revolutionary fire door control device utilizing a planetary gear arrangement to disconnect the operator and drop the door in the event of a fire.
- Easily drop test and reset a fire door without resetting spring tension and rerouting cables.



Patent pending.

Lift up and crank operation

- Revolutionary fire door control device utilizing clutch plates and unique counterbalance technology to drop the door in the event of a fire.



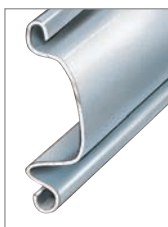
Slat Profiles

No. 2 Slat Profile



Standard:
Curved-faced single crown slat
Available:
Up to 20-gauge steel
Up to 20-gauge stainless steel.
Pitch*: 1.9"

No. 4 Slat Profile



Standard:
Curved-faced single crown slat
Available:
Up to 18-gauge steel
Up to 18-gauge stainless steel.
Pitch*: 2.8"

No. 14 Slat Profile



Standard:
Flat-faced slat
Available:
Up to 18-gauge steel
Up to 18-gauge stainless steel.
Pitch*: 2.45"

No. 17 Slat Profile



Standard:
Flat-faced slat
Available:
Up to 20-gauge steel
Up to 20-gauge stainless steel.
Pitch*: 1.6"

Model 700 (Face Mounted - Chain Hoist/Motor/Crank)

Width A	HEIGHT B (OPENING HEIGHT)															
	9'0"				9'1" TO 14'0"				14'1" TO 18'0"				18'1" TO 24'0"			
	BRACKET SIZE		SIDE ROOM		BRACKET SIZE		SIDE ROOM		BRACKET SIZE		SIDE ROOM		BRACKET SIZE		SIDE ROOM	
	X	Y	R	L	X	Y	R	L	X	Y	R	L	X	Y	R	L
2" SLAT																
Up to 20'0"	16-1/2"	15"	10"	6"	18-1/2"	17"	10"	6"	20"	19"	10"	6"	22"	21"	10"	6"
3" SLAT																
Up to 24'0"	16-1/2"	15"	10"	6"	20"	19"	10"	6"	22"	21"	10"	6"	24"	23"	10"	6"

NOTE: 24' height or 24' width or 400sqft max for 22ga. Crank limits are 14' height or 12' width or 168sqft.

Model 700 (Face Mounted-Lift up)

Width A	HEIGHT B (OPENING HEIGHT)			
	8'0"			
	BRACKET SIZE		SIDE ROOM	
	X	Y	R	L
2" SLAT				
Up to 10'0"	16-1/2"	15"	10"	8"
3" SLAT				
Up to 10'0"	18-1/2"	17"	10"	8"

NOTE: Manual lift 2' Slat-up 10' wide or 8' high or 80sqft.
Manual lift 3' Slat-up 8' wide or 8' high or 80sqft.

Model 700 (Between Jambs Mounted - Under Lintel Chain Hoist/Motor/Crank)

Width A	HEIGHT B (OPENING HEIGHT)															
	9'0"				9'1" TO 14'0"				14'1" TO 18'0"				18'1" TO 24'0"			
	BRACKET SIZE		SIDE ROOM		BRACKET SIZE		SIDE ROOM		BRACKET SIZE		SIDE ROOM		BRACKET SIZE		SIDE ROOM	
	X	Y	R	L	X	Y	R	L	X	Y	R	L	X	Y	R	L
2" SLAT																
Up to 20'0"	16-1/2"	15"	7-1/16"	9-1/16"	18-1/2"	17"	7-1/16"	9-1/16"	20"	19"	7-1/16"	9-1/16"	20"	19"	7-1/16"	9-1/16"
3" SLAT																
Up to 24'0"	16-1/2"	15"	7-1/16"	9-1/16"	18-1/2"	17"	7-1/16"	9-1/16"	22"	21"	7-1/16"	9-1/16"	24"	23"	7-1/16"	9-1/16"

NOTE: 24' height or 24' width or 400sqft max for 22ga. Crank limits are 14' height or 12' width or 168sqft.

Model 700 (Between Jambs Mounted-Lift up)

Width A	HEIGHT B (OPENING HEIGHT)			
	8'0"			
	BRACKET SIZE		SIDE ROOM	
	X	Y	R	L
2" SLAT				
Up to 10'0"	16-1/2"	15"	10"	6"
3" SLAT				
Up to 10'0"	18-1/2"	17"	10"	6"

FOR TECHNICAL INFORMATION, VISIT WWW.WAYNE-DALTON.COM/COMMERCIAL

Architect Resource Center

www.wayne-dalton.com/commercial

Go to www.wayne-dalton.com/commercial and click on the Architect Resource Center. Here you will quickly find all of the specifications, drawings and documents you need to complete your project.

DISTRIBUTED BY:



©2014 Wayne Dalton, a division of Overhead Door Corporation. Consistent with our policy of continuing product improvement, we reserve the right to change product specifications without notice or obligation. Item 333069 10M 3/14 JAR