

MOTOR SPECIFICATIONS: 1/2 HP motor to include a TENV motor, reversing magnetic controller in NEMA 1 enclosure, planetary gearbox for drive reduction, electric brake, includes UL listed thermal overload protection, rotary limit switches, safety edge circuit and transformer with 24 volt control secondary, and delay on reverse. Pre-wired to a terminal block using color coding of the wires to facilitate troubleshooting.

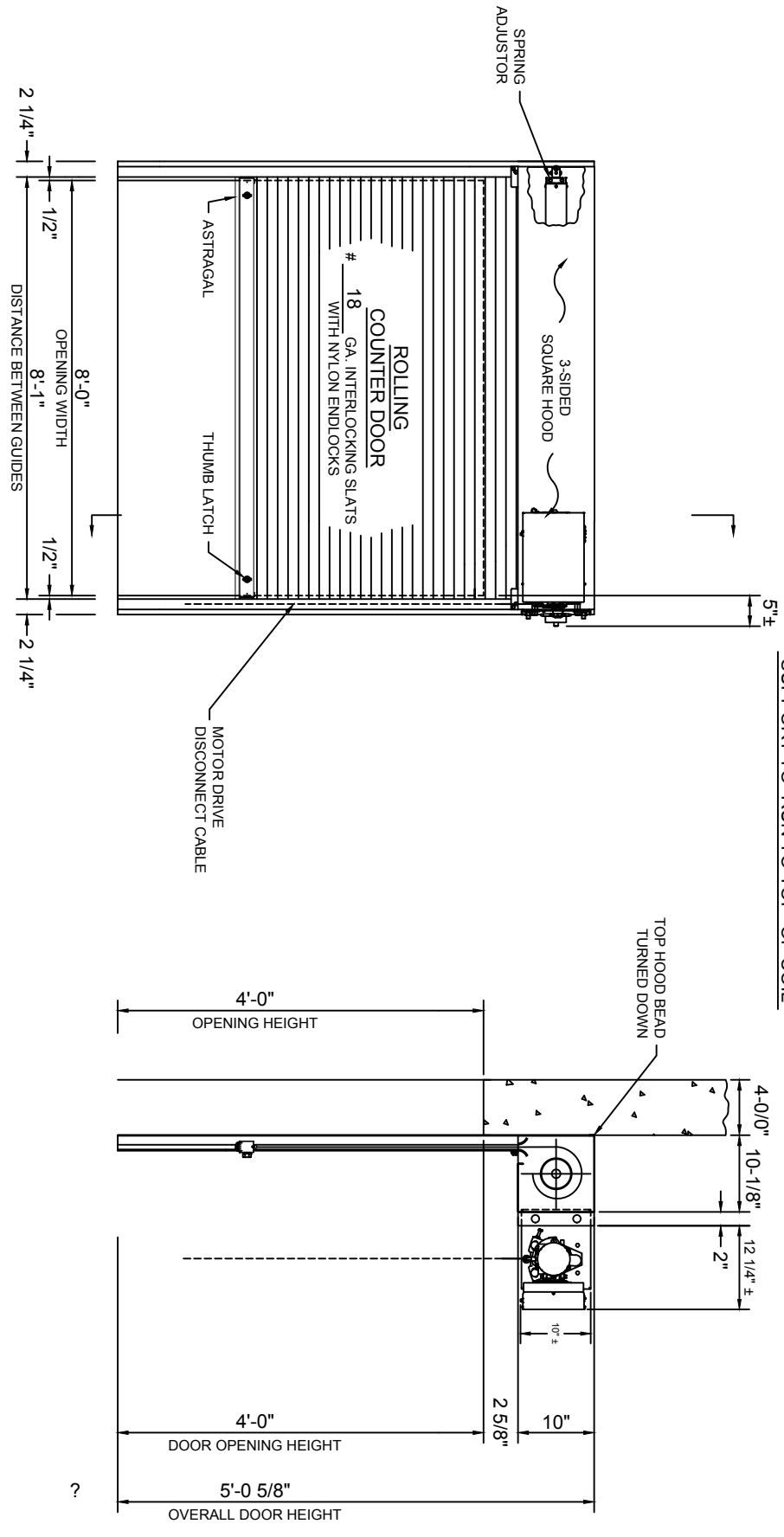
ELECTRICAL EQUIPMENT LIST: 1 - Three button push button station 'OPEN-CLOSE-STOP' in NEMA 1 enclosure, surface mounted.
1 - Motor mounted interlock.

CURRENT CHARACTERISTICS: 120 V 1 PH 60 HZ
Motor is to include an internal lock sensor (motor mounted interlock).
Electrical current must be verified in writing before job is released for manufacture; current verified and found correct. Operator bracket bracing required, unless operator is wall mounted.
Signed:

BOTTOM BAR LOCKING: Locking wing thumb latch located at both jambs, keyed alike but not master/Keyed.
Operable coil side only.

QUANTITY & MARK: (1) 001

MATERIAL & FINISH:
Curtain - Aluminum, clear anodized 204-R1
Bottom Bar - Extruded aluminum, clear anodized 204-R1
Guides - Extruded aluminum, clear anodized 204-R1
Hood - Aluminum, clear anodized 204-R1
Plain Steel - Powder coated gray

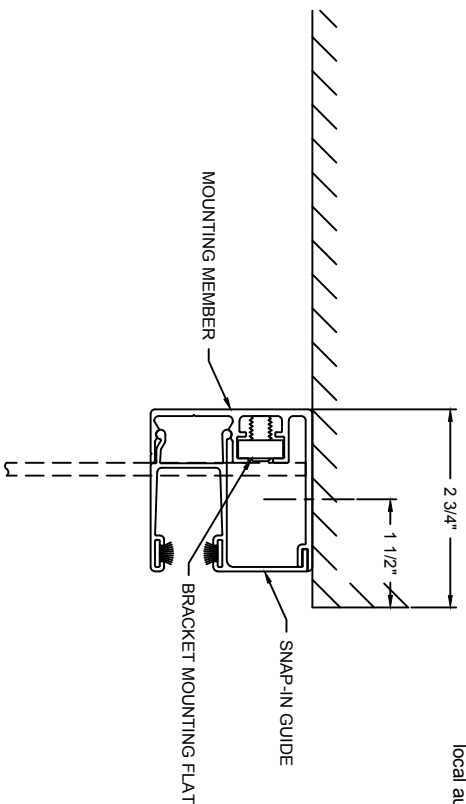


ELEVATION (COIL SIDE) AND SECTION VIEW
See drawing # Web09999040 001 B for guide detail.

PRODUCT CODE: MFI 1F 18AA
BSE_CDAR

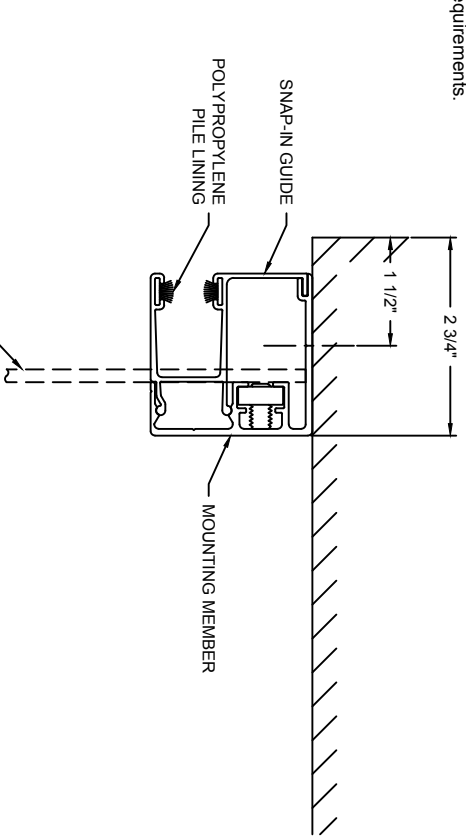
07-15-2016	03/23/17	03/23/17	KZZZ		
ORIGINAL DRAWING					
REVISION	DATE	BY			
<p>COOKSON Professional door solutions</p>			<p>JOB: Sample Counter Shutter</p>		
<p>MGRL MOTOR OPERATED ROLLING COUNTER DOOR</p>			<p>AGENT: ESC-10</p>		
<p>CONTRACTOR:</p>			<p>JOB #: Web09999040 001 A</p>		
<p>ARCHITECT:</p>			<p>ARCHITECT:</p>		

NOTE: Wall construction detail shown is for illustrative purposes only, does not imply compliance with building requirements, and must meet architectural specifications to properly support product. Products designed with wind load requirements must be properly fastened to structural members as specified in order to avoid catastrophic failure. Wall construction and closure installation shall be in accordance with the local authority having jurisdiction requirements.



G323A

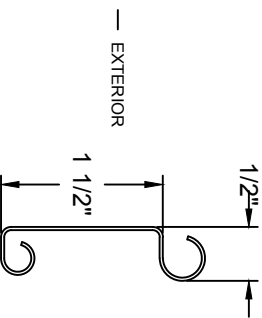
WALL FASTENERS:
 AT MAXIMUM 18" ON CENTER
 - 1/4" x 1-3/8" LONG EXPANSION BOLTS.
 (SOLID MASONRY REQUIRED)



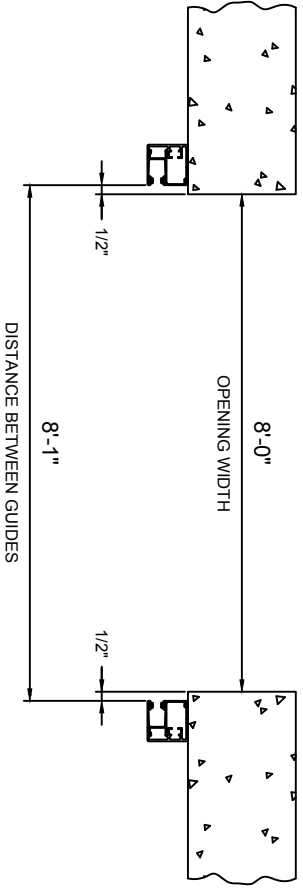
G323A

WALL FASTENERS:
 AT MAXIMUM 18" ON CENTER
 - 1/4" x 1-3/8" LONG EXPANSION BOLTS.
 (SOLID MASONRY REQUIRED)

C5P SLAT



PLAN OF OPENING



MK: 001

06-29-2016	PRODUCT CODE:
CD1_EXT	MFI 1F 18AA

#	REVISION	DATE	BY
---	ORIGINAL DRAWING	03/23/17	WEBBINGR

COOKSON
 Professional door solutions

JOB:
 EXTRUDED GUIDE ASSEMBLY
 Sample Counter Shutter

MODEL #:	JOB #:
ESC10	Web09999040 001 B

AGENT:	CONTRACTOR:	ARCHITECT:
--------	-------------	------------