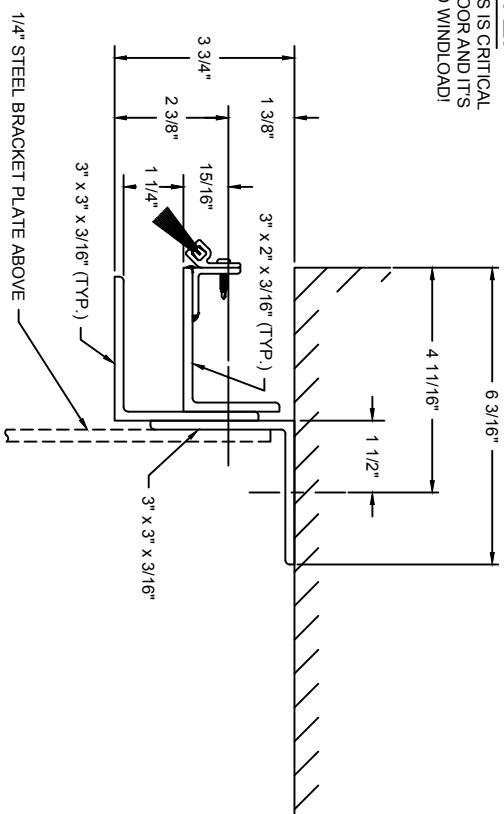




## INSTALLERS NOTE:

Technical drawing of a door assembly showing dimensions and components. The drawing includes the following labels and dimensions:

- Dimensions:**
  - Overall width:  $6 \frac{3}{16}"$
  - Distance from top edge to center of handle:  $4 \frac{11}{16}"$
  - Distance from center of handle to edge:  $1 \frac{1}{2}"$
  - Distance from bottom edge to center of handle:  $1 \frac{1}{4}"$
  - Distance from center of handle to edge:  $15 \frac{1}{16}"$
  - Distance from bottom edge to center of handle:  $2 \frac{3}{8}"$
  - Distance from bottom edge to center of handle:  $3 \frac{3}{4}"$
  - Distance from bottom edge to center of handle:  $1 \frac{3}{8}"$
- Components:**
  - UL LISTED SMOKE SEAL**: A triangular seal located at the bottom of the door frame.
  - 3" x 3" x 3/16"**: A rectangular component, likely a hinge or latch, located at the top of the door frame.



G292AL - 3 3/4"

## ASSEMBLY FASTENERS:

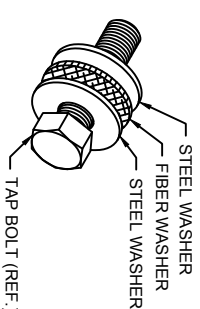
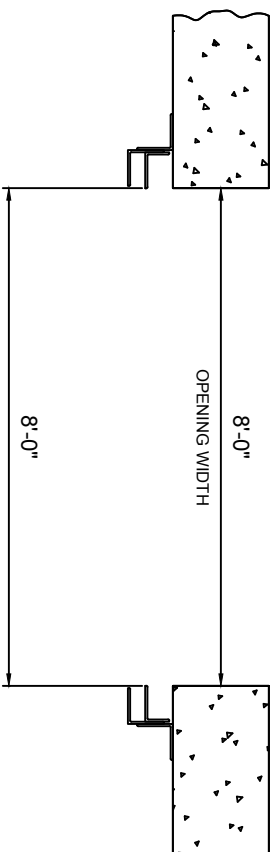
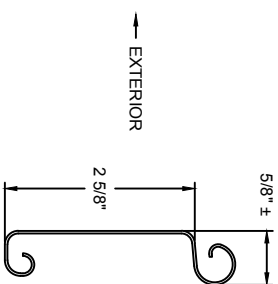
## ASSEMBLY FASTENERS:

<ul style="list-style-type: none"> <li>- AT 30° ON CENTER</li> <li>- 03/8" x 5" MASONRY ANCHOR, MIN. 3000 PSI CONCRETE REQ'D</li> <li>- MIN. EMBEDMENT DEPTH - 2-5/8"</li> <li>- HARDENED FLAT WASHERS</li> <li>- FLAT FIBER WASHER</li> </ul>	<ul style="list-style-type: none"> <li>- AT 22° ON CENTER</li> <li>- 03/8- 16 x 1-1/2" HEX HEAD CAP SCREW, GR. 5</li> <li>- HEX HEAD NUT, GR. 5</li> <li>- HARDENED FLAT WASHERS</li> <li>- FLAT FIBER WASHER</li> </ul>
--	--

MK: 001

## PLAN OF OPENING

## WALL FASTENER WASHER DETAIL



01-19-2017		PRODUCT CODE:	
FD1_375		CFM 5F 22GP	
DISTANCE BETWEEN GUIDES			
ORIGINAL DRAWING		03/29/17 KZZZ	
#	REVISION	DATE	BY
<div><div>COOKSON</div><div>Professional floor solutions</div></div>			
UL FIRE DOOR GUIDE ASSEMBLY, 3 3/4" PACKOFF			
JOB: SAMPLE - FIRE RATED			
AGENT:		MODEL #:	
		ERD11	
CONTRACTOR:		JOB #:	
		Web0999359 001 E	
ARCHITECT:			