



THERMOSPAN[®] 125

INSULATED SECTIONAL
STEEL DOORS CUT
YOUR TOTAL COST



WAYNE DALTON COMMERCIAL DOORS

Thermospan[®] 125

Wayne Dalton's Thermospan[®] 125 doors feature continuous foamed-in-place polyurethane insulation and standard joint seal that provide an R-value of 10.79. As a result, the door's construction provides a substantially higher thermal efficiency than industry standard polystyrene insulated doors.

The Wayne Dalton Thermospan[®] doors are the only doors in the industry with patented, roll-formed integral struts on each section, making them the most rigid doors available.

- THERMALLY EFFICIENT
R-VALUE: 10.79, U-VALUE: 0.093
- STANDARD SIZES UP TO
16' 2" WIDE AND 16' 1" HIGH
- COMPETITIVELY PRICED
- COMMERCIAL DURABILITY
- INTEGRAL STEEL STRUTS
FOR SUPERIOR STRENGTH



INSULATED SECTIONAL STEEL DOOR

Standard Features Overview

Thermal Efficiency

R-value*	10.79
U-value	.093
Thermal Break	Thermoplastic Adhesive

Construction

Panel Thickness	7/8" (22.23 mm)
Max Height	16'1"
Max Width	16'2"
Exterior Steel	.009"
Interior	Roll formed with two 1-3/4" integral struts sealed with polypropylene rib caps
Standard Springs	10,000 cycle

Color and Window Options

Interior Color	White
Exterior	Surface

Warranty	EIGHT (8) YEARS against cracking, splitting, rust deterioration and delamination. ONE (1) YEAR against defects in material and workmanship
----------	---

Codes and ASTM Standard Class

STC (ASTM E 413)	Class 21
OITC (ASTM E 1332)	Class 18
ASTM E 84	Class A (FS 10 or less/SD 210 or less)
UBC 17-5	Meets
ASTM D 1929	Flash ignition = 734° F, Self ignition = 950° F

Options

- Vision Lites
- Chain Hoist Operation
- Motor Operation
- Sensing Edges
- Photo Eyes
- High Cycle Spring (25K, 50K, 100K)
- 3" Track Option
- Solid Shafts
- Perimeter Weatherseal
- Special Track Designs
- Mullions

Ideal for applications where thermal efficiency is important, and competitive cost is essential, Wayne Dalton's Thermospan® 125 sectional door features a foamed-in-place polyurethane core firmly bonded to hot-dipped galvanized inner and outer skins.

Integral roll-formed struts per section add rigidity and strength, making the Thermospan® 125 suitable for commercial and industrial applications.

The patented Thermospan® design demonstrates that overhead doors need not be the weak link in an energy-efficient building.

Materials & Construction

Thermospan® 125 doors feature pre-painted inner and outer skins made from hot-dipped galvanized steel for added corrosion protection.

The exterior surface is pebbled and grooved, enhancing the appearance while providing improved strength, and each section is reinforced with two 1-3/4" integral roll-formed struts for even greater rigidity.

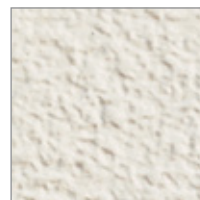
Hot-dipped 18-gauge galvanized end caps offer a superior surface for hinge attachment.

Our standard joint seal reduces air infiltration. The seal combined with the polyurethane core provides excellent thermal efficiency.

Factory-installed vision lites (24" x 6") are available, as are automatic door openers.

Finish Options

White Embossed Stucco Finish



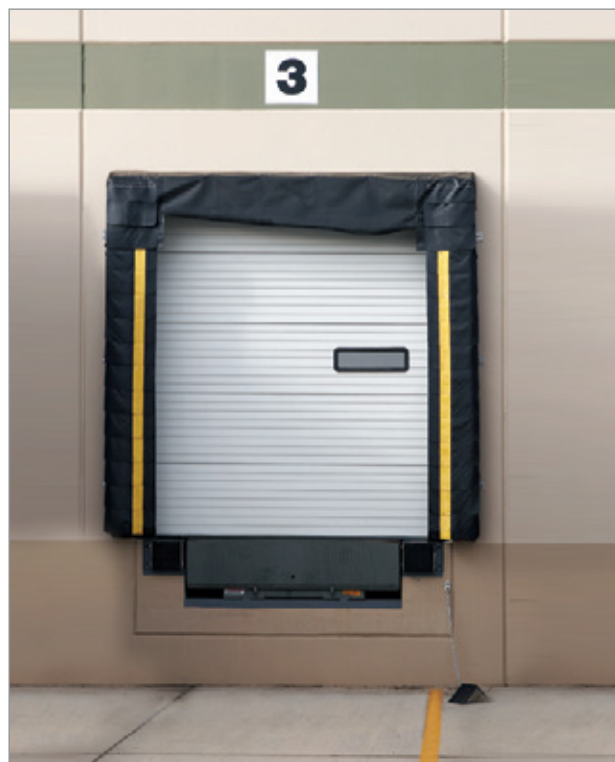
Wind load options available



*Wayne Dalton uses a calculated R-value for our insulated doors.



Lite Options



Vision Lites allow for visibility while maintaining security

Pre-painted (white polyester finish) inner and outer skins

provide corrosion resistance. Both skins are hot-dipped galvanized steel for further protection against corrosion.

Pin stripes

(grooves) and pebble finish on outer skin add strength and enhance appearance.

Two patented, integral 1-3/4" roll-formed struts per section add rigidity and strength.

(industry exclusive)

18-gauge hot-dipped galvanized steel "wrap-around" end caps

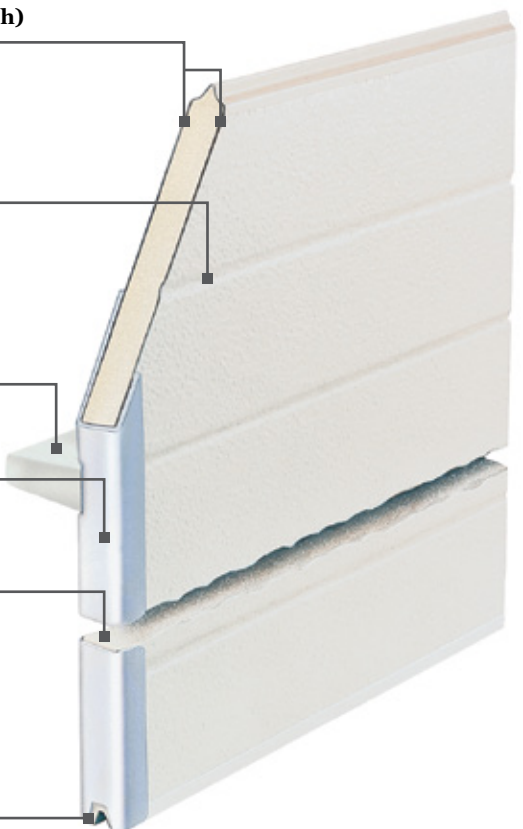
offer interior hinge attachment surface and exterior leg for proper seal against jamb.

Solid polyurethane core

adds to insulating efficiency.

Standard joint seal

prevents air infiltration and saves energy.



General Operating Clearances

Type	Headroom***		Sideroom**		Depth into Room	Center Line of Springs	
	2" Track	3" Track	2" Track	3" Track	2" & 3" Track	2" Track	3" Track
Standard Lift Manual 12" R	13"-17"	NA	4.5"	5.5"	Opening Height +18"	Opening Height +12"	N/A
Standard Lift Manual 15" R	15"-20"	16"-21"				Opening Height +13"	Opening Height +14"
Standard Lift Motor Oper. 12" R	15"-20"	NA			Opening Height +66"	Opening Height +12"	N/A
Standard Lift Motor Oper. 15" R	15"-20"	18"-24"				Opening Height +13"	Opening Height +14"
High Lift Manual	High Lift +12"		24" One Side		Opening Height -Lift +30"	Opening Height +Lift +6.5"	Opening Height +Lift +7.5"
High Lift Motor Oper.							
Vertical Lift Manual	Door Height +20"		4.5"	5.5"	18"	Double Door Height +13"	
Vertical Lift Motor Oper.			24" One Side				
Low Headroom Manual*	6"-15"	6"-15"	6"	9"	Opening Height +20" to-26"	N/A	
Low Headroom Motor Oper.*	9"-17"	9"-17"			Opening Height +66"		

Panel/Section Selection Guide

Door Section and Lite Selection			Door Height and Section Selection	
Door Width	Number of Panels	Maximum Number of Windows	Door Height	Number of Sections
Up to 9'2"	2	2 or 3	Up to 8'1"	4
9'3" to 12'2"	3	3 or 4	8'8" to 10'1"	5
12'3" to 16'2"	4	4 or 5	10'5" to 12'1"	6
			12'-2" to 14'-1"	7
			14'-2" to 16'-1"	8
			16'2" & Up	Call Factory

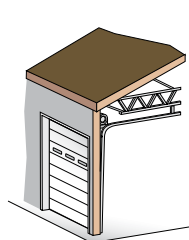
For assistance from the factory, please call
800 827-3667

*Springs must be rear mount to achieve minimum headroom listed. Front mount torsion headroom depends on drum size, and varies over the range listed.

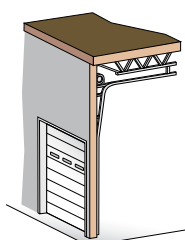
**8" side-room required, one side, for doors with chain hoist.

***Headroom for standard lift depends on drum size, and varies over the range listed.

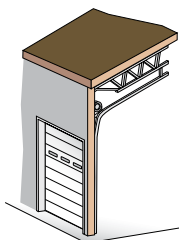
Track Selection Guide



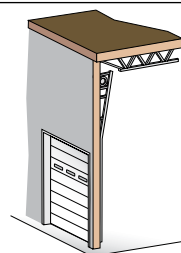
Standard Lift



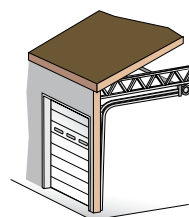
High Lift
(break-away is standard, straight incline is available)



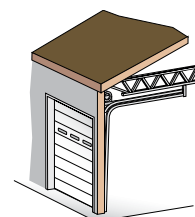
Roof Pitch
(standard or high lift)



Vertical Lift
(break-away is standard, straight incline is available)



Low Headroom
(rear mount torsion)



Low Headroom
(front mount torsion)

FOR TECHNICAL INFORMATION, VISIT WWW.WAYNE-DALTON.COM/COMMERCIAL

Architect Resource Center

www.wayne-dalton.com/commercial

Go to www.wayne-dalton.com/commercial and click on the Architect Resource Center. Here you will quickly find all of the specifications, drawings and documents you need to complete your project.

DISTRIBUTED BY:



©2014 Wayne Dalton, a division of Overhead Door Corporation. Consistent with our policy of continuing product improvement, we reserve the right to change product specifications without notice or obligation. Item 332534 5M 11/14 JAR